



**Hereford Road, W2**

**£980** Per week

**Dexters**



## Hereford Road, W2

An Immaculately presented and architecturally designed, two double bedroom garden flat located on the residential, tree-lined Hereford Road, Notting Hill.

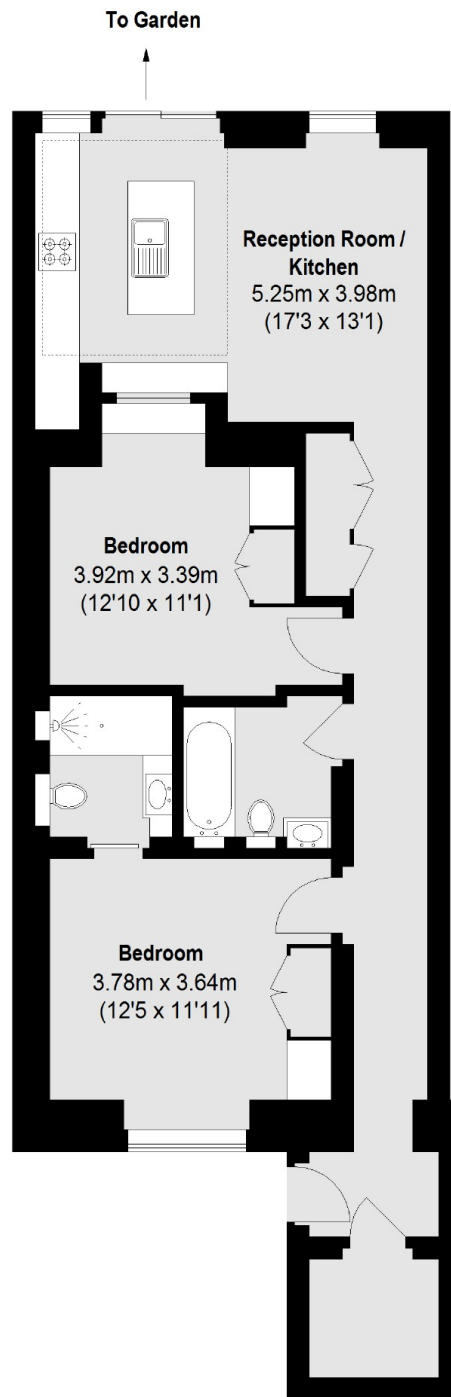
Hereford Road is a magnificent, residential, tree-lined street located in the very heart of Notting Hill; moments away from Portobello Road, Westbourne Grove and a short walk to few different stations and bus stops.

### Features

- Two Double Bedrooms
- Two Bathrooms
- Private Terrace
- High Specification



# Hereford Road, London, W2



## Lower Ground Floor

Total area (approx.): 76.08 sq. m (819 Sq. ft)