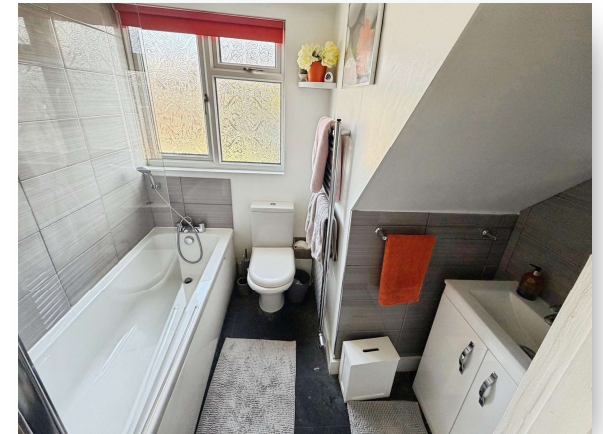
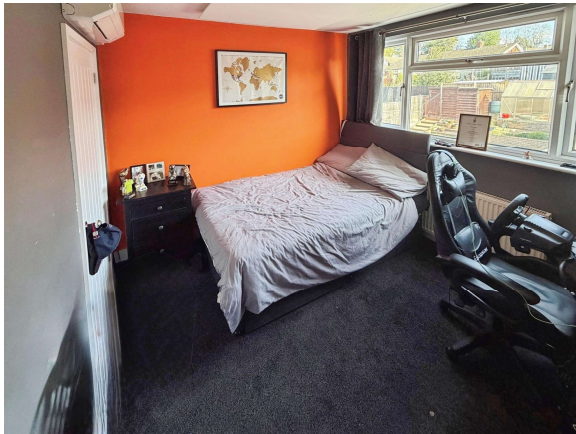


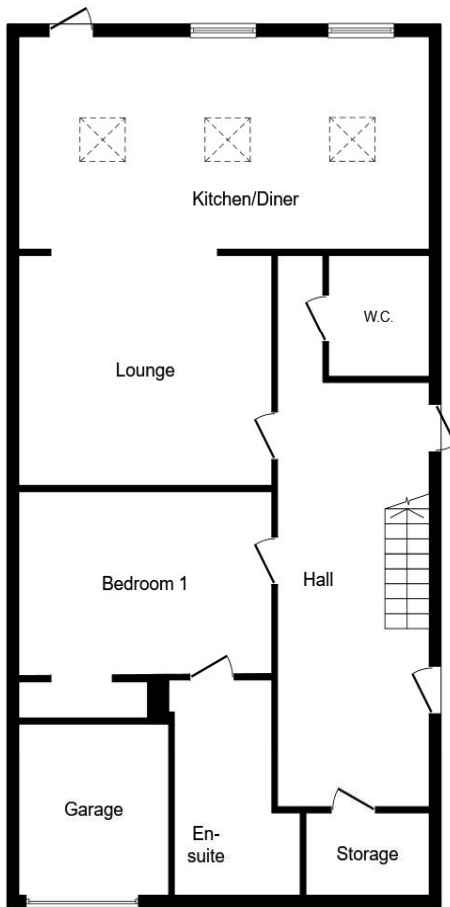


Leaders Way, Newmarket, CB8 0DP

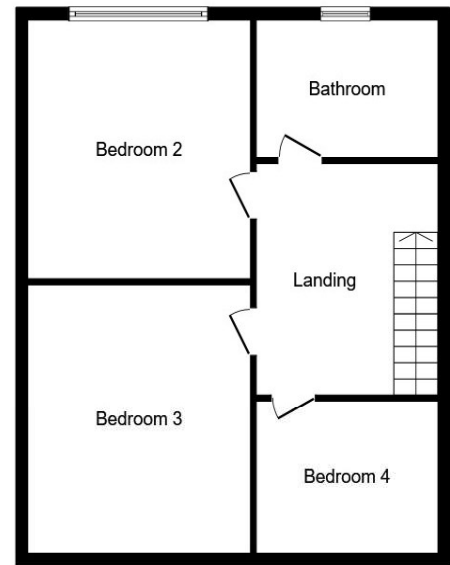
welcome to Leaders Way, Newmarket

An extended three/four-bedroom semi-detached family home located on the popular Leaders Way in Newmarket. The property offers flexible accommodation, including a ground-floor principal bedroom with en-suite, off-street parking, a part-converted garage and excellent access to local amenities.





Ground Floor



First Floor

Accommodation -

Entrance Hall

Cloakroom/W.C

Lounge

9' 1" x 12' 7" (2.77m x 3.84m)

Kitchen/Diner

17' 2" x 12' 10" (5.23m x 3.91m)

Reception Room/ Bedroom One

11' 10" x 9' 7" (3.61m x 2.92m)

Ensuite

First Floor

Bedroom Two

9' x 9' 10" (2.74m x 3.00m)

Bedroom Three

11' 4" x 9' 10" (3.45m x 3.00m)

Bedroom Four

8' 6" x 8' 1" (2.59m x 2.46m)

Bathroom

Outside

This floor plan is for illustrative purposes only. It is not drawn to scale. Any measurements, floor areas (including any total floor area), openings and orientations are approximate. No details are guaranteed, they cannot be relied upon for any purpose and do not form any part of any agreement. No liability is taken for any error, omission or misstatement. A party must rely upon its own inspection(s). Powered by www.Propertybox.io



welcome to Leaders Way, Newmarket

- Three/Four Bedroom Semi Detached Home
- Spacious Extended Kitchen/Diner
- Modern Family Bathroom and Downstairs W/C
- Block-paved Driveway
- Part-converted Garage

Tenure: Freehold EPC Rating: Awaited
Council Tax Band: C

£350,000



view this property online [sequencehome.co.uk/Property/NEM100187](https://www.sequencehome.co.uk/Property/NEM100187)



Property Ref:
NEM100187 - 0002

1. MONEY LAUNDERING REGULATIONS Intending purchasers will be asked to produce identification documentation at a later stage and we would ask for your co-operation in order that there is no delay in agreeing the sale. 2. These particulars do not constitute part or all of an offer or contract. 3. The measurements indicated are supplied for guidance only and as such must be considered incorrect. Potential buyers are advised to recheck measurements before committing to any expense. 4. We have not tested any apparatus, equipment, fixtures or services and it is in the buyers interest to check the working condition of any appliances. 5. Where an EPC, or a Home Report (Scotland only) is held for this property, it is available for inspection at the branch by appointment. If you require a printed version of a Home Report, you will need to pay a reasonable production charge reflecting printing and other costs. 6. We are not able to offer an opinion either written or verbal on the content of these reports and this must be obtained from your legal representative. 7. Whilst we take care in preparing these reports, a buyer should ensure that his/her legal representative confirms as soon as possible all matters relating to title including the extent and boundaries of the property and other important matters before exchange of contracts.

Tylers is a trading name of Sequence (UK) Limited which is registered in England and Wales under company number 4268443, Registered Office is Cumbria House, 16-20 Hockliffe Street, Leighton Buzzard, Bedfordshire, LU7 1GN. VAT Registration Number is 500 2481 05.



Please note the marker reflects the
postcode not the actual property



01638 660303



newmarket@tylers.net



Meldreth House Wellington Street,
NEWMARKET, Suffolk, CB8 0HT



[sequencehome.co.uk](https://www.sequencehome.co.uk)