



Barton Broads Park, Barton-upon-Humber, North Lincolnshire



£120,000





Key Features

- Total Floor Area:- 82 Square Metres
- Over 50's Site
- Kitchen & Dining Room
- Cosy Lounge
- Two Bedrooms
- Shower Room
- Rear Garden
- Driveway
- Workshop
- Summer House
- EPC rating Exempt





DESCRIPTION

Barton Broads is an exclusive development of contemporary park homes for people over 50 years of age. Private access to the surrounding nature reserve and minutes walk away from local amenities and transport links.

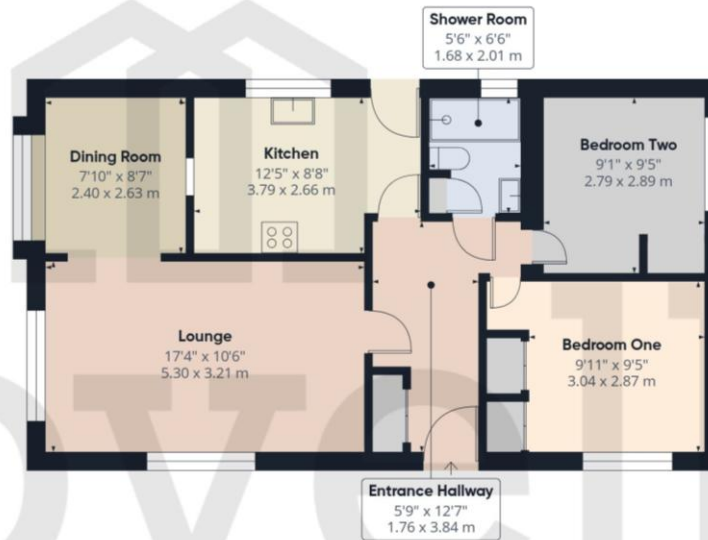
This lovely home comprises of two bedrooms and a shower room. Further on there, is a fully equipped kitchen. Not to forget, the spacious lounge with an adjacent dining room.

Finished with a private rear garden with a summer house and a handy workshop. Perfect for someone looking to escape the busy city lifestyle.

Do not hesitate and book a viewing today!



FLOORPLAN



Ground Floor Building 1



Ground Floor Building 2

**Barton Broads Park, Barton-upon-Humber,
North Lincolnshire**

TENURE

The Tenure of this property is Leasehold.

COUNCIL TAX

Band A

VIEWING

By appointment with the Sole Agent Lovelle Estate Agency, telephone 01652 636587. We recommend prior to making an appointment to view, prospective purchasers discuss any particular points likely to affect their interest in the property with one of our property consultants who have seen the property in order that you do not make a wasted journey.

MORTGAGE ADVICE

Budgeting correctly and choosing the right mortgage for a move is vital. For independent mortgage and insurance advice call our mortgage advisor on 01652636587 to arrange an appointment.

AGENTS NOTE

These particulars are for guidance only. Lovelle Estate Agency, their clients and any joint agents give notice that:- They have no authority to give or make representation/warranties regarding the property, or comment on the SERVICES, TENURE and RIGHT OF WAY of any property. These particulars do not form part of any contract and must not be relied upon as statements or representation of fact. All measurements/areas are approximate. The particulars including photographs and plans are for guidance only and are not necessarily comprehensive.

SKB Estates Limited T/A Lovelle Estate Agency

HOW TO MAKE AN OFFER

If you are interested in this property then it is important that you contact us at your earliest convenience. We will require certain pieces of personal information from you in order to provide a professional service to you and our client. The personal information you have provided to us may be shared with our client, the seller, but it will not be shared with any other third parties without your consent other than stated reasons detailed within our privacy policy. More information on how we hold and process your data is available on our website <https://www.lovelle.co.uk/privacy-policy/> and you can opt out at any time by simply contacting us.

For any offer you wish to make we will need to establish certain details before negotiation can take place. This is so that our vendor can make an informed choice when negotiating and accepting your offer. You will be asked to provide formal I.D. and address verification, as required under new Money Laundering Legislation. You might also have one or two questions for us, such as which solicitor to choose, or which mortgage lender has the best offers available for me. We have a one stop shop to satisfy all of these needs so please ask.

A copy of the full Energy Performance Certificate for this property is available upon request. Advisory Notes - Please be advised if you are considering purchasing a property for Buy To Let purposes, from 1st April 2018 without an EPC rated E or above it will not be possible to issue a new tenancy, or renew an existing tenancy agreement.

Follow us on:



ENTRANCE 1.76m x 3.84m (5'10" x 12'7")

Entered through a half glazed UPVC door into the hallway. Doors to all principal rooms and a handy storage cupboard.

KITCHEN 3.79m x 2.66m (12'5" x 8'8")

Range of wall and base units with contrasting work surfaces and upstands. Inset electric oven and a four ring gas hob with extraction canopy over. Space for a fridge freezer and plumbing for a washing machine. Stainless steel sink and drainer with a swan neck mixer tap. Window and a half glazed UPVC door to the rear elevation.

LOUNGE 5.3m x 3.21m (17'5" x 10'6")

Bright room with a feature Adam style electric fireplace. Dual aspect with windows to the front and side elevation.

DINING ROOM 2.4m x 2.63m (7'11" x 8'7")

Great space to receive guests in.
Window to the side elevation.

BEDROOM ONE 3.04m x 2.87m (10'0" x 9'5")

Range of fitted bedroom furniture incorporating two wardrobes.
Window to the front elevation.

BEDROOM TWO 2.79m x 2.89m (9'2" x 9'6")

Window to the side elevation.

SHOWER ROOM 1.68m x 2.01m (5'6" x 6'7")

Three piece suite incorporating a shower cubicle, push button WC and a vanity wash hand basin with a mixer tap.
Handy storage cupboard and a window to the rear elevation.

OUTSIDE THE PROPERTY:**FRONT ELEVATION**

Fully laid to gravel with a driveway and access to the workshop.

REAR GARDEN

Predominantly laid to gravel with multiple seating areas and colourful mature plantings adorning it.

WORKSHOP *2.48m x 5.89m (8'1" x 19'4")*

Power and lighting.

SUMMER HOUSE *1.76m x 3.13m (5'10" x 10'4")***SERVICE CHARGE**

Currently The Pitch Fee is estimated at £2632.93 which equates to £219.41 per month. Reviewed annually.

LOCATION

Barton-upon-Humber is a highly regarded historic market town with Primary and Senior schools, quaint shops, supermarkets, stylish restaurants, cosy pubs, charming coffee shops and two petrol stations. It benefits from numerous recreational facilities and is surrounded by open countryside. The distinctive Churches, library, wildlife reserves and popular museums allow you to enjoy peace and tranquillity whilst the shopping and nightlife of neighbouring towns means you are never far away from a faster pace of life!

BROADBAND TYPE

Standard - 15 Mbps (download speed), 1 Mbps (upload speed),
Superfast - 55 Mbps (download speed), 9 Mbps (upload speed),
Ultrafast - 1000 Mbps (download speed), 600 Mbps (upload speed).

MOBILE COVERAGE

Outdoors - Great,
Indoors - Good,
Available - O2, Vodafone, Three, EE.

*

We are required by law to conduct anti-money laundering checks on all those selling or buying a property. Whilst we retain responsibility for ensuring checks and any ongoing monitoring are carried out correctly, the initial checks are carried out on our behalf by Landmark who will contact you once you have had an offer accepted on a property you wish to buy. The cost of these checks for buyers is £24.00 (incl. VAT) per client, which covers the cost of obtaining relevant data and any manual checks and monitoring which is required. This fee will need to be paid by you in advance of us issuing a memorandum of sale, directly to Landmark, and is non-refundable. We will receive some of the fee taken by Landmark to compensate for its role in the provision of these checks.

