



Ormond Avenue, TW12

£5,000 Per calendar month

Dexters



Ormond Avenue, TW12

A four bedroom semi-detached home in excellent condition located in one of Hampton's most sought after residential roads.

The house is split over three floors. On the ground floor is a generous kitchen/diner/family room with bi-fold doors to the garden and large sash windows flooding the room with natural light. There is also a study/playroom, garage with a utility room and downstairs WC.

On the upper floors is a large living room with a feature fireplace and access to a roof terrace. There are four generous double bedrooms and two bathrooms. The master suite has the benefit of a walk in wardrobe, en suite bathroom and private balcony.

At the front you have off-street parking and, at the rear a, well maintained west facing garden with sandstone patio, lawned area and a useful side access.

Located on one of Hampton Villages most sought after residential roads, just moments away for the village green and local shops and services for your day to day essentials and more.

Features

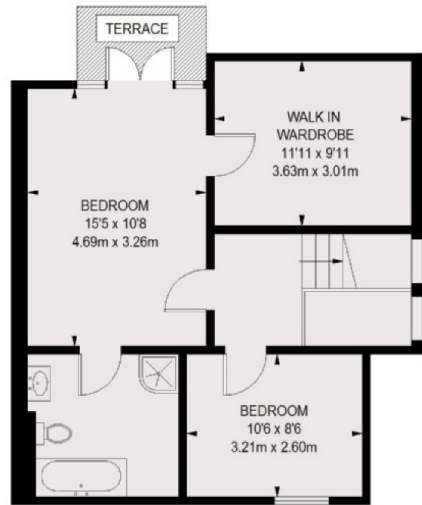
- Semi-Detached
- Four Double Bedrooms
- Study/ Playroom
- Two Bathrooms & WC
- Garage & Off-Street Parking
- West Facing Garden



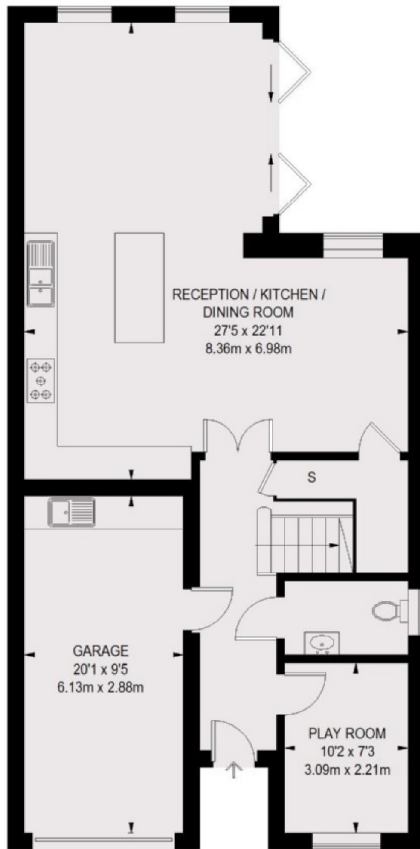




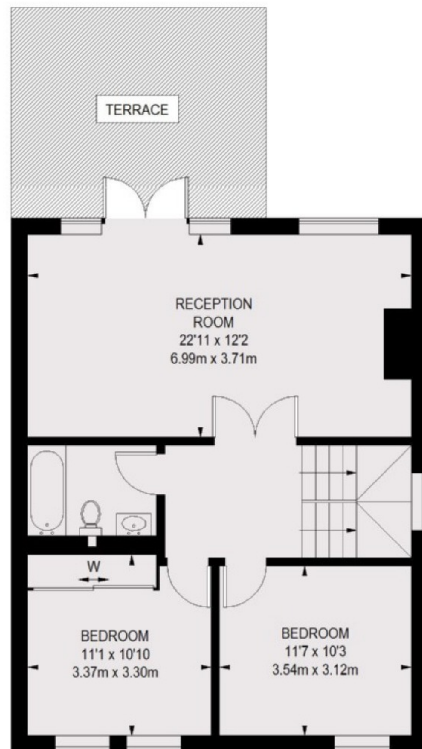
Ormond Avenue, Hampton, TW12



SECOND FLOOR



GROUND FLOOR



FIRST FLOOR

TOTAL APPROX. FLOOR AREA 2002 SQ. FT. (186.04 SQ. M.)
GARAGE 195 SQ. FT. (18.09 SQ. M.)

Dexters

Hampton
93 Station Road
Hampton
TW12 2BD
Lettings
020 8255 8899

Energy Rating: B. We aim to make our particulars both accurate and reliable. However they are not guaranteed; nor do they form part of an offer or contract. If you require clarification on any points then please contact us, especially if you're traveling some distance to view. Please note that appliances and heating systems have not been tested and therefore no warranties can be given as to their good working order.

 **RICS** Regulated
Estate Agent
and Letting Agent

dexters.co.uk