

Blacklands House Wheatsheaf Road


Henfield, BN5 9BE

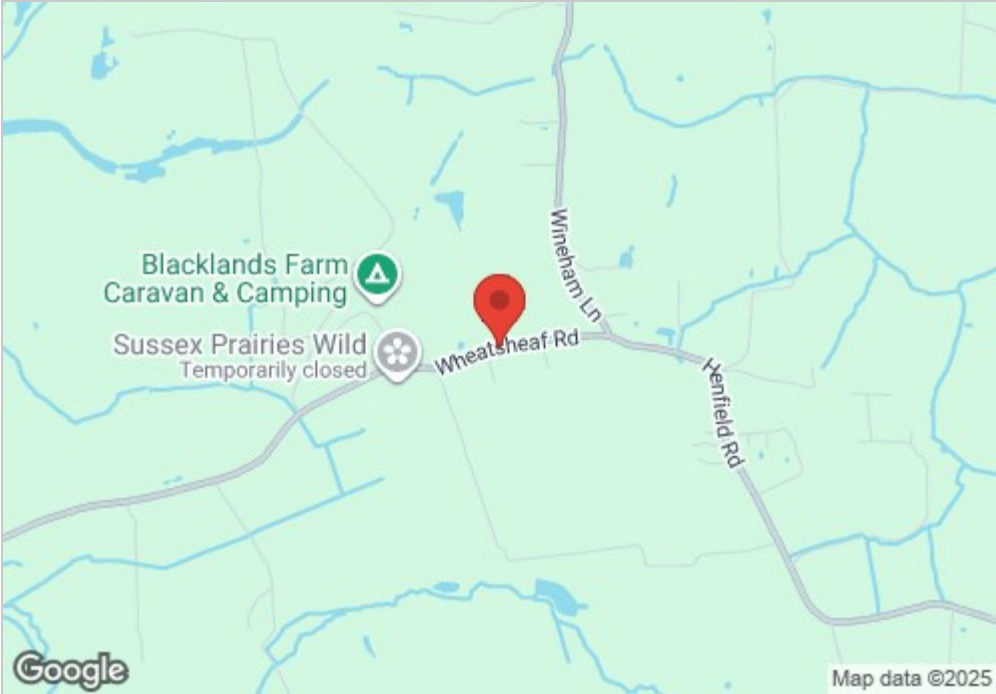
Offers in excess of £900,000

A rare and exciting opportunity to acquire a 6 bedroom detached equestrian property benefitting from approximately 3.6 acres, 14 stables, sand school and large double garage.

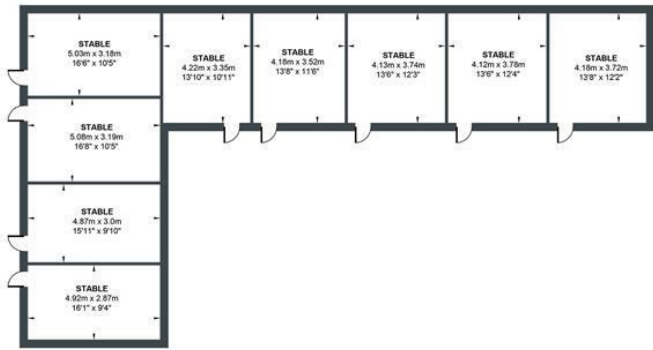


- Large Detached Property
- Situated In A Semi Rural Location
- Off Road Parking for Numerous Vehicles
- Perfect Equestrian Use With 14 Stables, Sand School All Set In Circa 3.6 Acres
- Large Double Garage 26ft x 19ft
- In Need Of General Updating

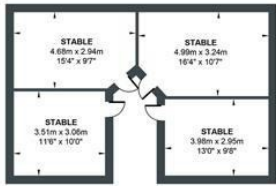
Energy Efficiency Rating		Current	Potential
Very energy efficient - lower running costs			100
(92 plus) A			
(81-91) B			
(69-80) C			
(55-68) D			
(39-54) E		55	
(21-38) F			
(1-20) G			
Not energy efficient - higher running costs			
England & Wales		EU Directive 2002/91/EC	



WHEATSHEAF ROAD
Approximate Gross Internal Area = 466.27 sq m / 5018.88 sq ft
Illustration for identification purposes only, measurements are approximate, not to scale.



OUTBUILDING
Approximate Floor Area
1531.05 sq ft
(142.24 sq m)



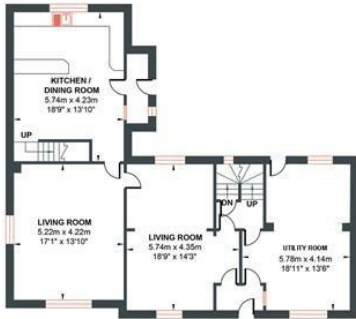
OUTBUILDING
Approximate Floor Area
569.51 sq ft
(52.91 sq m)



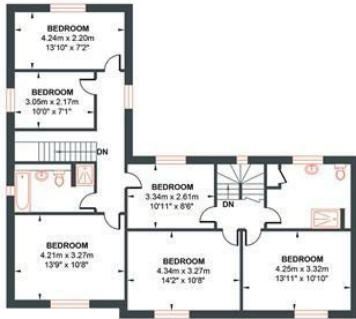
OUTBUILDING
Approximate Floor Area
133.79 sq ft
(12.43 sq m)



LOWER GROUND FLOOR
Approximate Floor Area
197.51 sq ft
(18.35 sq m)



GROUND FLOOR
Approximate Floor Area
1052.60 sq ft
(97.79 sq m)



FIRST FLOOR
Approximate Floor Area
1025.80 sq ft
(95.30 sq m)



GARAGE
Approximate Floor Area
508.59 sq ft
(47.25 sq m)

Foster & Co and their clients give notice that:
These sales particulars do not constitute any part of an offer of contract and are for guidance for prospective purchases only and should be not relied upon as a statement of fact.
We are not to be held responsible for material information that has not been given to us by our client at the time of marketing.
All measurements are approximate

