



Latchmere Lane, KT2

£400,000

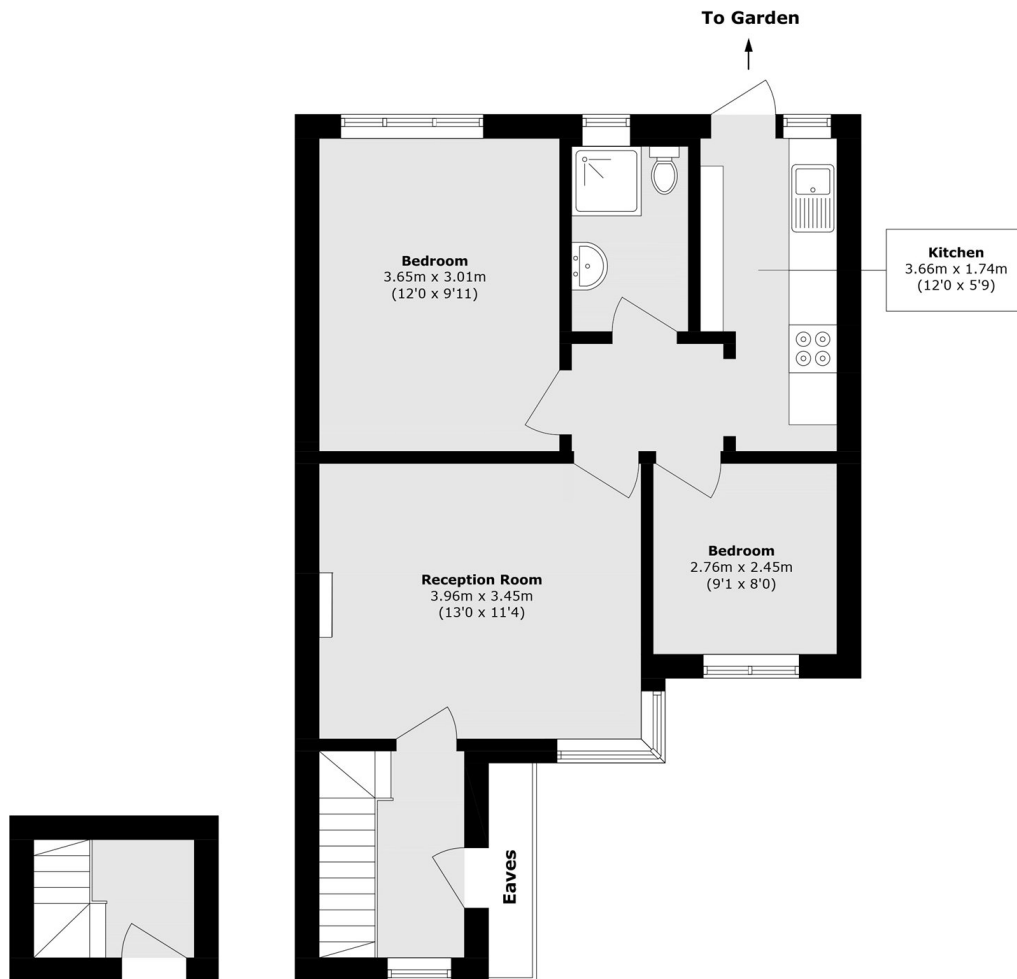
A beautiful, two bedroom, first floor maisonette that has recently undergone a complete refurbishment and is now ready for the new owner to move into and enjoy. As well as enjoying a private entrance, the property also benefits from a large private rear garden and a brick built garage.

Latchmere Lane is a highly sought after location, valued for its proximity to several excellent local schools, the local park, the River Thames and the open spaces of Richmond Park. The property is also less than a mile from Kingston town centre, offering a wide range of shopping, dining and leisure facilities.

Features

- Newly Refurbished
- No Onward Chain
- Two Bedrooms
- Private Garden
- Garage
- Own Front Door

Latchmere Lane, Kingston Upon Thames, KT2



Total area (approx.): 53.2 sq. m (572.6 sq. ft)
(Excluding Eaves)