



Hurford's

Westwood Park Road, Peterborough Freehold Guide Price £780,000

Key Features



- Delightful detached thatched cottage
- Feature gated secure entrance
- Four bedrooms
- Prime location
- Bespoke home

Ideally situated just a short journey from Peterborough City Centre, the property offers excellent road and rail connections, with direct links to London in under 45 minutes.

Beautifully and extensively refurbished in recent years, this distinctive home sits proudly within mature landscaped gardens extending to approximately third of an acre, providing both privacy and an exceptional setting for family living and entertaining. The garden has a beautiful thatched gazebo, perfect for hosting family and friends on a warm summers evening, tying in with the characterful features of the main property.

The spacious and versatile accommodation is introduced via a grand entrance hall featuring deep-panelled walls, setting the tone for the character and elegance found throughout.



The impressive sitting room is flooded with natural light, creating a warm and inviting atmosphere, while a separate formal dining room opens through to a charming conservatory. Additional ground floor accommodation includes a separate study, ideal for home working, a refitted kitchen breakfast room, a downstairs cloakroom, and an attractive Edwardian-style conservatory overlooking the mature landscaped grounds.

To the first floor, the property offers four well-proportioned bedrooms, including a superb principal suite complete with a spacious three-piece en-suite bathroom. A newly refitted and upgraded contemporary family bathroom further enhances the quality of accommodation on offer.

Set along a desirable tree-lined avenue in Peterborough, this unique home perfectly combines character, space, and modern refinement. An ideal property for a growing family, as well as those who enjoy relaxing and entertaining, this exceptional residence represents a rare opportunity within a highly regarded location.

Early internal viewing is highly recommended to fully appreciate the accommodation, setting, and lifestyle this outstanding home has to offer. Please contact us for further details.



Westwood park Road, Peterborough

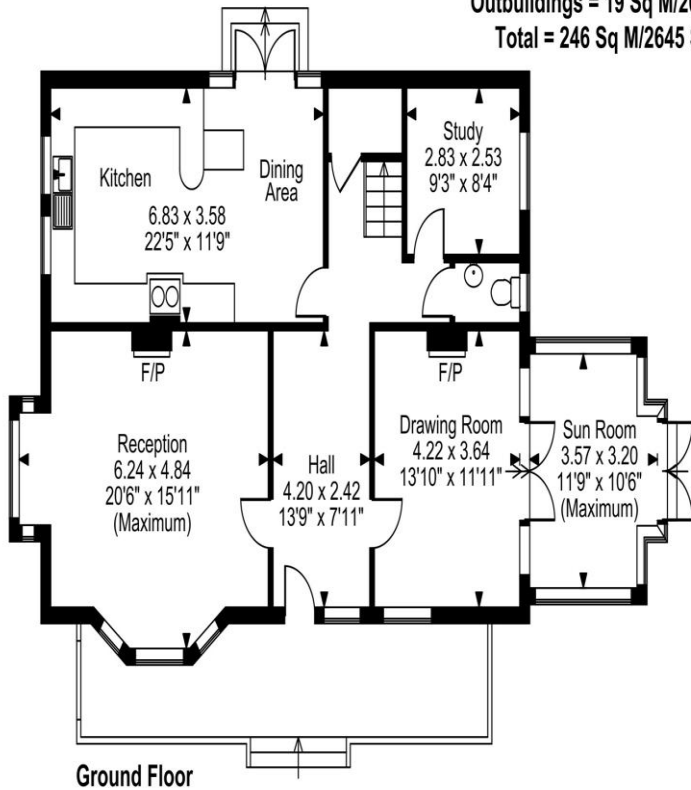
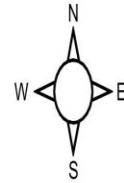
Approximate Gross Internal Area

Main House = 198 Sq M/2128 Sq Ft

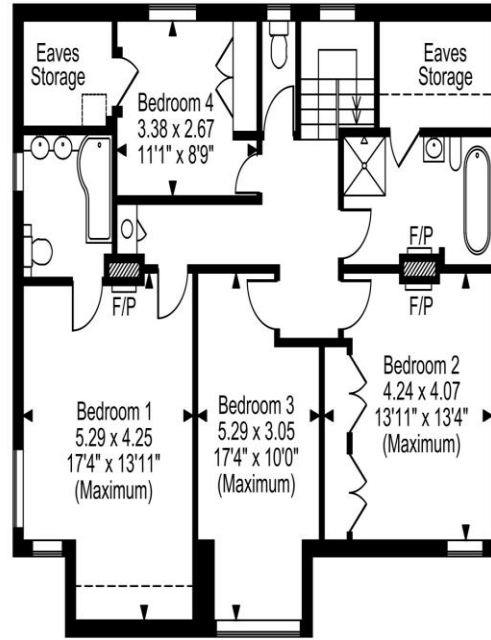
Garage = 29 Sq M/317 Sq Ft

Outbuildings = 19 Sq M/200 Sq Ft

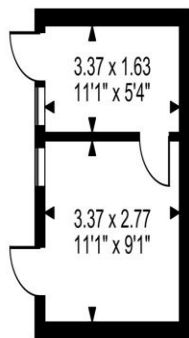
Total = 246 Sq M/2645 Sq Ft



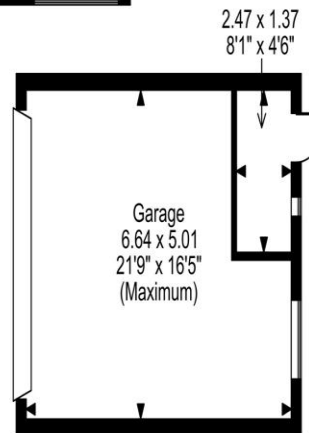
Ground Floor



First Floor



Outbuilding



FOR ILLUSTRATIVE PURPOSES ONLY - NOT TO SCALE

The position & size of doors, windows, appliances and other features are approximate only.

□ □ □ □ Denotes restricted head height

© ehous. Unauthorised reproduction prohibited. Drawing ref. dig/8692307/AGI

Selling your property?

Contact us to arrange a FREE home valuation.

 01733 380956

 Unit 5, The Barns Milton Lane, Castor, PETERBOROUGH, Cambridgeshire , PE5 7DH

 info@hurfords.co.uk

 www.hurfords.co.uk



 SCAN ME



Hurfords is a trading name of Sharman Quinney Holdings Limited which is registered in England and Wales under company number 4174227, Registered Office is Cumbria House, 16-20 Hockliffe Street, Leighton Buzzard, Bedfordshire, LU7 1GN. VAT Registration Number is 500 2481 05.

1: These particulars do not constitute part or all of an offer or contract. 2: The measurements indicated are supplied for guidance only and as such must be considered incorrect. 3: Potential buyers are advised to recheck the measurements before committing to any expense. 4: Hurfords has not tested any apparatus, equipment, fixtures, fittings or services and it is the buyers interests to check the working condition of any appliances. 5: Hurfords has not sought to verify the legal title of the property and buyers must obtain verification from their legal representative. 6: Intending purchasers will be asked to produce identification documentation at a later stage and we would ask your co-operation in order that there will be no delay in agreeing the sale. Ref: HUC103259 - 0003

