



7 Station Road
Houghton-le-Spring
Tyne & Wear
DH4 5AH

£725 pcm

End of Terrace House
Three Bedrooms
Ideal Location
Close to all Local Amenities
Ideal Family Home
Available Early May





Safe and Secure are delighted to welcome to the rental market this well presented three bedroom end terrace house, available immediately on an unfurnished. Situated on Station Road, Houghton-le-Spring, the property is closely located to all local amenities and within access to public transport links.

More photos and details to follow, if you are interested please give our office a call on 0191 385 4477.

LOUNGE

16' 3" x 13' 8" (4.95m x 4.17m) Entrance door, double glazed window to front and two radiators.

DINING ROOM

10' 11" x 13' 11" (3.33m x 4.24m) Double glazed window to rear, staircase to first floor and built in storage cupboard.

KITCHEN

10' 6" x 7' 7" (3.2m x 2.31 m) Fitted wall and base units, work surfaces, single bowl sink and drainer unit, gas cooker point, space for washing machine and double glazed window to rear.

REAR HALL

Built in storage cupboard and door to rear.

BEDROOM 1

14' 0" x 10' 10" (4.27m x 3.3m) Double glazed window to rear and built in storage cupboard.



BEDROOM 2

9' 11" x 13' 7" (3.02m x 4.14m) Double glazed window to front and radiator.

BEDROOM 3

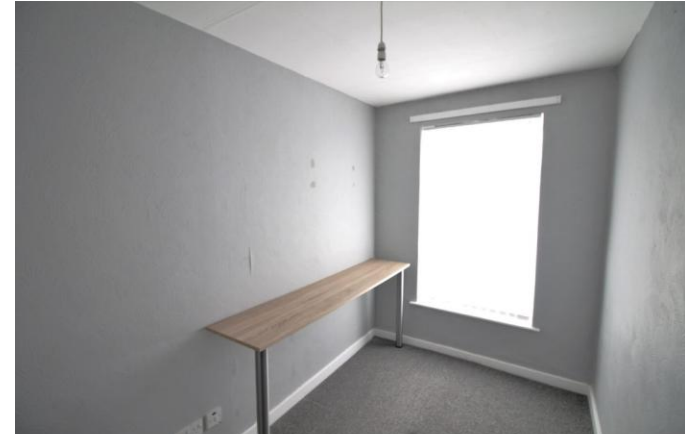
6' 1" x 10' 6" (1.85m x 3.2m) Double glazed window to front and radiator.

BATHROOM

White three piece suite comprising of a panelled bath with mixer tap shower, pedestal wash hand basin and low level WC and radiator.

REAR YARD

Paved area to rear.



Local Authority
Council Tax Band
EPC Rating

Sunderland City Council

A

D



Houghton Le Spring
24-25 Westbourne Terrace
Houghton Le Spring
Tyne And Wear
DH4 4QT

Contact
0191 3854477
info@safeandsecureproperties.c
o.uk
safeandsecureproperties.co.uk

Agents Note: Whilst every care has been taken to prepare these particulars, they are for guidance purposes only. All measurements are approximate and are for general guidance purposes only and whilst every care has been taken to ensure their accuracy, they should not be relied upon and potential buyers/tenants are advised to recheck the measurements.