



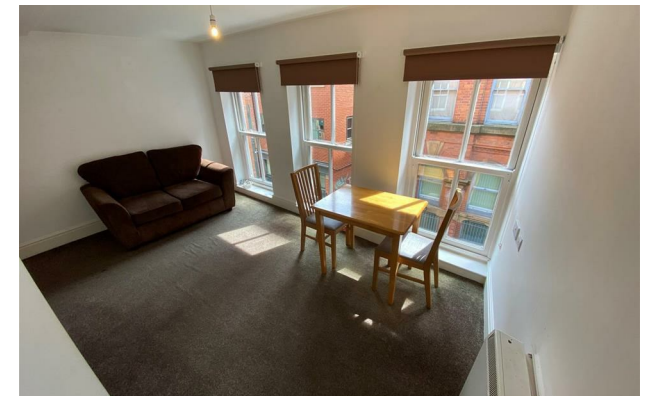
Jordan fishwick

Apt 3 Solmame House, 7 Union Street, M4
£925 Per Calendar Month



Solmame House Northern Quarter M4 1PB

£925 Per Calendar Month




The Property

Available Early July. We are delighted to offer this quirky one bedroom apartment located in the heart of the Northern Quarter. The apartment comprises of entrance hallway leading to open plan living room/kitchen area. The kitchen is equipped with fridge freezer, oven and electric hob. There is a good sized bathroom with storage cupboard, and a large double bedroom. Furnished. No Parking. 12 month minimum contracts only. Council Tax Band A. EPC Rating TBC.

VIDEO/ PHOTO OFFERS NOT ACCEPTED - PLEASE CALL TO BOOK A VIEWING

- Available Early July
- 2nd Floor Apartment
- One Bedroom Furnished Apartment
- Northern Quarter Location
- Close to the City Centre
- Tax Band A
- EPC Rating tbc
- No Parking
- Furnished



Energy Efficiency Rating		
	Current	Potential
Very energy efficient - lower running costs		
(92 plus) A		
(81-91) B		
(69-80) C		
(55-68) D		
(39-54) E		
(21-38) F		
(1-20) G		
Not energy efficient - higher running costs		
England & Wales	EU Directive 2002/91/EC 	





These particulars are believed to be accurate but they are not guaranteed and do not form a contract. Neither Jordan Fishwick nor the vendor or lessor accept any responsibility in respect of these particulars, which are not intended to be statements or representations of fact and any intending purchaser or lessee must satisfy himself by inspection or otherwise as to the correctness of each of the statements contained in these particulars. Any floorplans on this brochure are for illustrative purposes only and are not necessarily to scale.

Offices at: Offices at Chorlton, Didsbury, Disley, Hale, Glossop, Macclesfield, Manchester Deansgate, Manchester Whitworth Street, New Mills, Sale, Wilmslow and Withington