



Edison Road, Eccles

£1,200 PCM

Welcome to this well-presented three-bedroom semi-detached home, available to rent on Edison Road, in the popular and well-established area of Eccles (M30 7AQ). Built in 1935, this house exudes character and history, offering a unique charm that is hard to find elsewhere. With a total of 926 sq ft, there is ample room to create the home of your dreams.

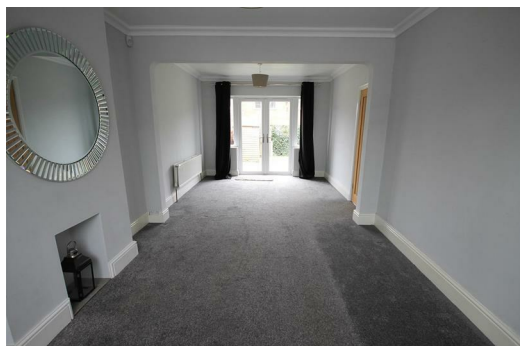
The property offers a spacious and welcoming layout, featuring two open-plan reception rooms that create a versatile living and dining area, ideal for family living or entertaining. The kitchen is well-proportioned and functional, perfect for everyday use.

To the first floor, there are three bedrooms along with a family bathroom, making the property well suited to a family or a couple seeking additional space.

Externally, the home benefits from both front and rear gardens, offering private outdoor space to enjoy. The semi-detached position adds to the sense of comfort and privacy, all within an established residential neighbourhood.

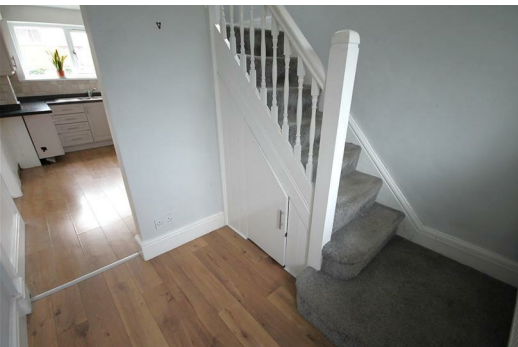
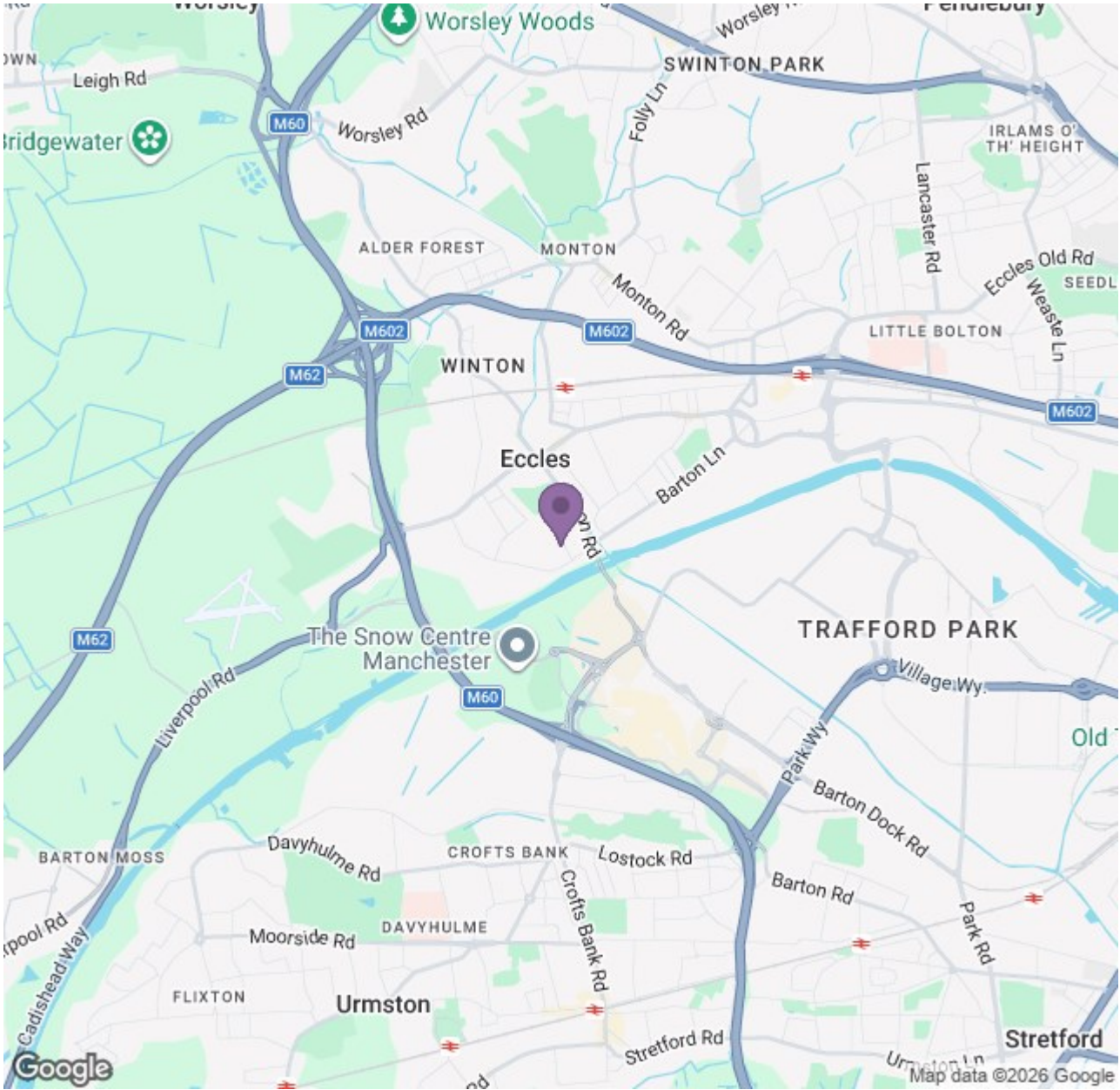
Conveniently located close to local amenities, schools and transport links, this property offers an excellent opportunity for those looking for a long-term rental home in a desirable location.

Early viewing is recommended to appreciate the space and setting on offer.



Ascend

Built on higher standards



Energy Efficiency Rating		Environmental Impact (CO ₂) Rating	
Current	Potential	Current	Potential
Energy Efficiency Rating			
74			
64			
54			
44			
34			
24			
14			
4			
0			
England & Wales			
EPC check approved			

Environmental Impact (CO ₂) Rating		Environmental Impact (CO ₂) Rating	
Current	Potential	Current	Potential
Environmental Impact (CO ₂) Rating			
74			
64			
54			
44			
34			
24			
14			
4			
0			
England & Wales			
EPC check approved			

Ascend

Built on higher standards