

Head Office:
Dixon Kelley Estate Agents
1 Penn Court
Station Road, West Moors
Dorset. BH22 0JJ

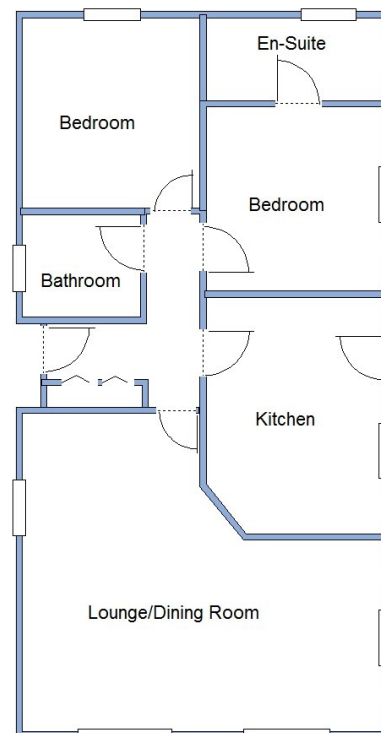
DORSET PARK HOMES

DRAFT

www.dorsetparkhomes.com

Telephone: 01202 877511

9 Sunest Park, St Ives, Ringwood, Hampshire. BH24 2PD



This drawing has been prepared for diagrammatic purpose only. Not to scale

2 Bedroom Park Home approx 40' x 20'

Accommodation & approximate room dimensions:

- Country Homes Parkland Special Approx 2013
- Entrance Hall: Cloaks cupboard & Linen cupboard.
- Modern Kitchen: approx 12'7" x 9'3". Fantastic range of wall & base units. Integrated dishwasher & washing machine. Space for tall fridge/freezer. 'Neff' high level electric oven and microwave. Gas hob & extractor hood. Cupboard housing Gas Combination boiler. Door to rear garden.
- Lounge/Diner: approx 19'4" x 17'10" max overall. Feature fireplace with electric fire fitted. Double aspect windows.
- Bedroom 1: approx 9'11" x 9'3". Built-in wardrobes.
- En-Suite: Walk-in shower cubicle. Vanity wash basin & WC. Chrome heated towel rail. Storage cupboard.
- Bedroom 2: approx 10'2" x 9'5". Built-in wardrobe.
- Bathroom: Panelled bath, vanity wash basin & WC. Chrome heated towel rail.
- Block Paved Driveway to provide Off Road Parking
- Rear Garden: Beautifully landscaped garden laid patio, artificial grass & mature shrubs. Metal shed, outside tap, 2 gates. Electric plug socket. Enjoying private sunny aspect.
- Gas Central Heating & PVCu Double Glazing
- Age Restriction 45+
- Pets Considered
- Small, gated Residential Park near to local amenities.

Immaculate Condition



Pitch Fee: Approx £253.81 per month
Subject to Annual Review
Council Tax Band: 'A'

Tenure: 1983 Mobile Homes Act Agreement

Price £250,000

VIEWING STRICTLY BY APPOINTMENT WITH THE VENDOR'S AGENT Dorset Park Homes 01202 877511

IMPORTANT NOTE: These particulars are believed to be correct but their accuracy is not guaranteed. They do not form part of any contract. Nothing in these particulars shall be deemed to be a statement that the property is in good structural condition or otherwise, nor that any of the services, appliances, equipment or facilities are in good working order or have been tested. Purchasers should satisfy themselves on such matters prior to purchase Ref.W05248

The recommended specialist in Park Home sales
Proprietor: Simon Dixon

