



Edgeley Road, Clapham, SW4

2 bedroom flat - conversion for sale

£600,000

Share of Freehold

Property Details

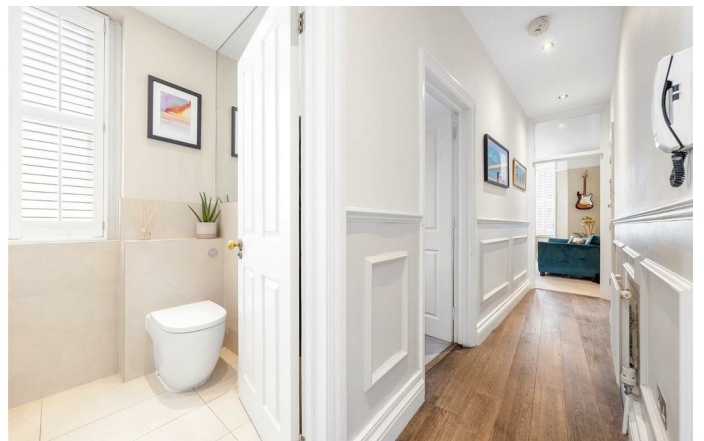
This characterful two-bedroom apartment with a private terrace is set over the first floor of a desirable Victorian mansion block. At the front, a spacious reception room features a bay window with plantation shutters, built-in shelving and cupboards in the alcoves, high ceilings, ornate cornicing, a picture rail, and soft carpet underfoot, creating a bright, elegant, and inviting space. The separate dine-in kitchen boasts dual-aspect sash windows, white cabinetry with ample storage, integrated white goods, a Bosch oven, and a gas hob, with doors opening onto the private terrace, perfect for al-fresco dining or relaxing outdoors. The principal bedroom offers built-in wardrobes and space for a desk or dressing table, while the second bedroom features a stylish feature wall with panelling and is ideal as a guest room, nursery, or home office. The family bathroom includes a shower cubicle, cream tiling, a vanity unit with storage, round bowl sink, and concealed cistern toilet.

Features

- Two bedrooms
- Private terrace
- Victorian mansion block
- Separate dine-in kitchen and reception room
- Amenities of Clapham High Street a four-minute stroll
- Northern Line an eight-minute walk
- Overground a four-minute walk
- Close to Clapham Common
- Share of freehold
- Chain-free

Council tax band D

EPC rating D (65)

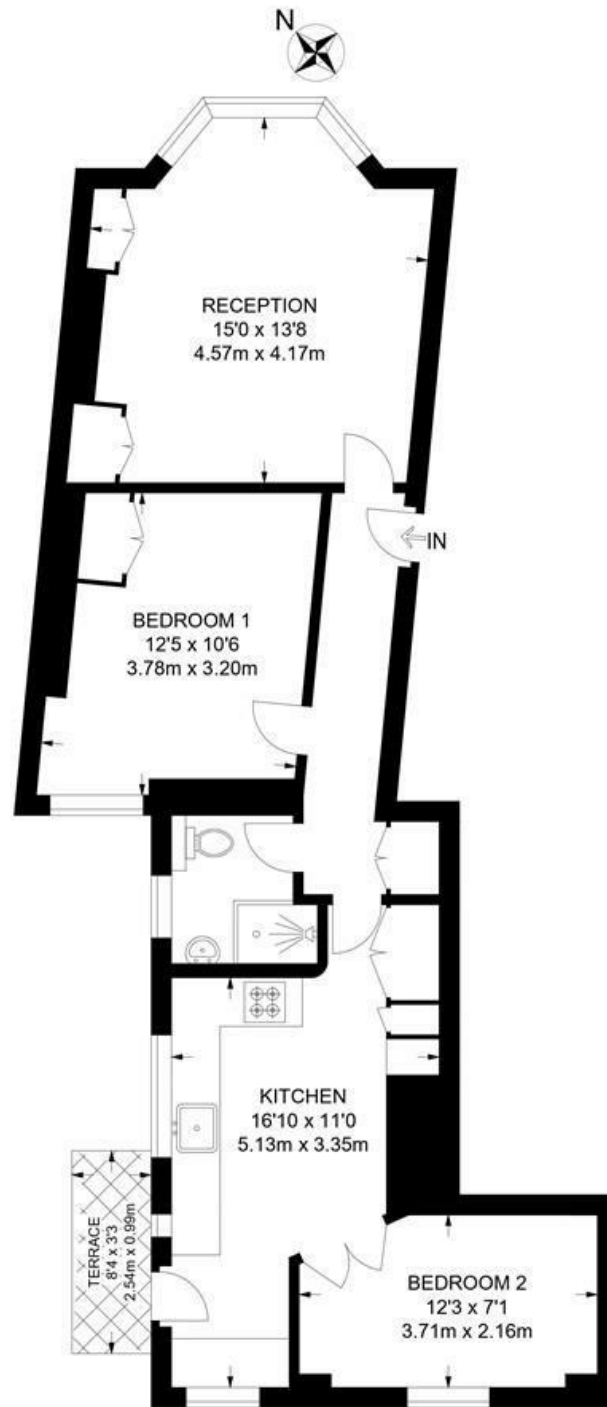




Edgeley Road, Clapham, SW4

Edgeley Road, SW4
2 Bedroom Flat

APPROXIMATE GROSS INTERNAL AREA: **679 SQ FT / 63 SQ M**



FIRST FLOOR



While we try our very best, floor plans are produced as a guide only and we take no responsibility for the precise accuracy with which any property is represented.

Edgeley Road, Clapham, SW4

