



10, Brougham Square, Trinity Street, Shrewsbury, SY3 7PE  
£750 Per Month



10, Brougham Square, Trinity Street, Shrewsbury, SY3 7PE

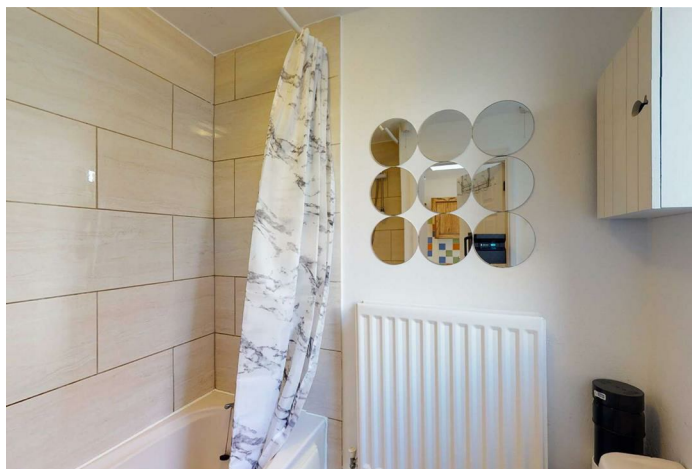
**£750 Per Month**

VIRTUAL TOUR AVAILABLE - Two bedroom mid terraced house situated in a quiet square in the heart of Belle Vue, close to Shrewsbury town centre. Allocated parking to the front and courtyard garden to the rear.

Available: 17/04/2026

## Description

Comprising: Living room, dining room, kitchen including oven & hob, bathroom including shower, two double bedrooms, rear courtyard garden, outhouse. Curtains included. Full double glazing, gas central heating. Allocated parking space in front of property. EPC C



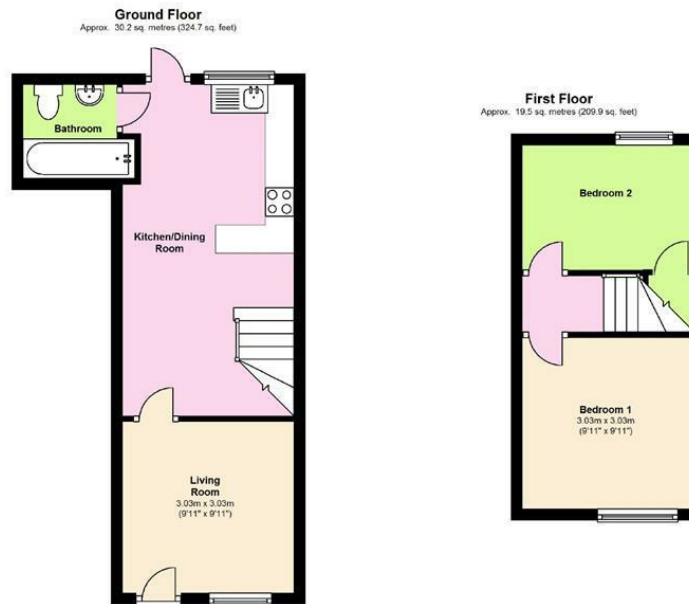
Unfurnished

Council Tax Band: B

Available: 17th April 2026

EPC: C

## Floor Plans



Total area: approx. 49.7 sq. metres (534.6 sq. feet)

We accept no responsibility for any mistake or inaccuracy contained within the floorplan. The floorplan is provided as a guide only and should be taken as an illustration only. The measurements, contents and positioning are approximations only and provided as a guidance tool and not an exact replication of the property.  
Plan produced using Planilo.

These particulars, whilst believed to be accurate are set out as a general outline only for guidance and do not constitute any part of an offer or contract. Intending purchasers should not rely on them as statements of representation of fact, but must satisfy themselves by inspection or otherwise as to their accuracy. No person in this firm's employment has the authority to make or give any representation or warranty in respect of the property.