



**Connells**

Southwood Hill  
Northampton



## Property Description

Step inside the entrance hall with stairs rising to the first floor. The generous living room provides a relaxing space for the family, leading seamlessly into a bright, fitted kitchen/dining room. This functional space offers ample room for hosting and daily meals, with a convenient door providing direct access to the rear garden perfect for indoor-outdoor living.

The first floor hosts three well-proportioned bedrooms, each offering plenty of natural light and space for storage. The family bathroom, serving all three bedrooms, completes the upper level.

To the rear, you will find a low-maintenance garden, ideal for those seeking a private outdoor space without the upkeep.

Additionally, the property benefits from a communal parking area located nearby.

## Entrance Hall

Double glazed door to the front aspect. Understairs storage cupboard. Wall mounted radiator.

## Lounge

Double glazed window to the front aspect. Wall mounted radiator. TV point.

## Dining Room

Double glazed window to the rear aspect. Wooden door to the front aspect. Two wall mounted radiators.

## Kitchen

Wall and base units. Worksurfaces. Sink and drainer unit. Space for white goods. Double glazed window to the rear aspect.

## Landing

Access to loft space.

## Bedroom One

Double glazed window to the rear aspect. Wall mounted radiator.

## Bedroom Two

Double glazed window to the front aspect. Wall mounted radiator.

## Bedroom Three

Double glazed window to the front aspect. Wall mounted radiator.

## Bathroom

Bath, wash hand basin and low level WC. Heated towel rail. Double glazed window to the rear aspect.

## Outside

### Front Garden

Laid to lawn. Path.

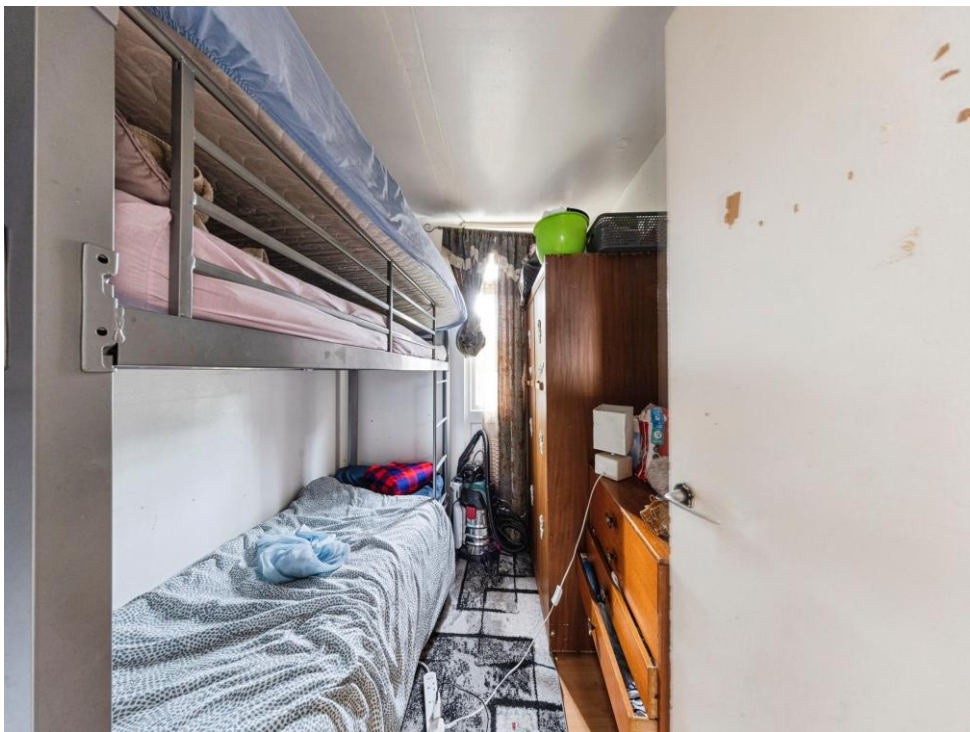
### Rear Garden

Laid to lawn. Patio area. Enclosed by fencing with rear gated access.

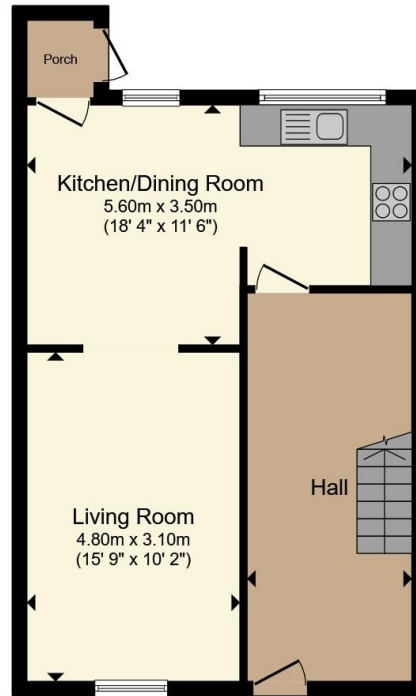
## Parking

Communal parking

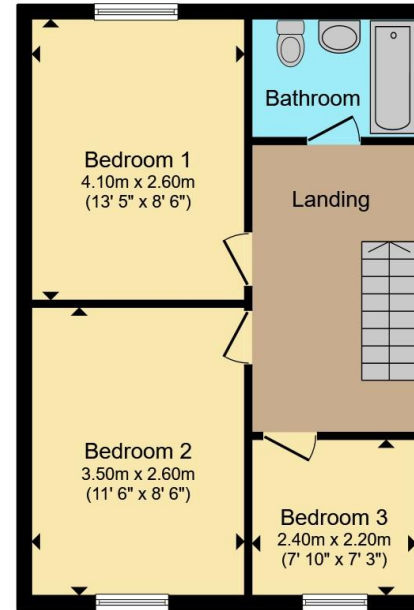








**Ground Floor**



**First Floor**

Total floor area 95.3 m<sup>2</sup> (1,026 sq.ft.) approx

This floor plan is for illustrative purposes only. It is not drawn to scale. Any measurements, floor areas (including any total floor area), openings and orientation are approximate. No details are guaranteed, they cannot be relied upon for any purpose and they do not form part of any agreement. No liability is taken for any error, omission or misstatement. A party must rely upon its own inspection(s). Powered by [www.propertybox.io](http://www.propertybox.io)



To view this property please contact Connells on

**T 01604 638 281**  
**E [northampton@connells.co.uk](mailto:northampton@connells.co.uk)**

6 Wood Hill  
 NORTHAMPTON NN1 2DA

EPC Rating: Council Tax  
 Awaited Band: A

Tenure: Freehold

**view this property online [connells.co.uk/Property/NHT415251](http://connells.co.uk/Property/NHT415251)**



1. MONEY LAUNDERING REGULATIONS Intending purchasers will be asked to produce identification documentation at a later stage and we would ask for your co-operation in order that there will be no delay in agreeing the sale. 2. These particulars do not constitute part or all of an offer or contract. 3. The measurements indicated are supplied for guidance only and as such must be considered incorrect. Potential buyers are advised to recheck measurements before committing to any expense. 4. We have not tested any apparatus, equipment, fixtures, fittings or services and it is in the buyers interest to check the working condition of any appliances.

Connells Residential is registered in England and Wales under company number 1489613, Registered Office is Cumbria House, 16-20 Hockliffe Street, Leighton Buzzard, Bedfordshire, LU7 1GN. VAT Registration Number is 500 2481 05.

**See all our properties at [www.connells.co.uk](http://www.connells.co.uk) | [www.rightmove.co.uk](http://www.rightmove.co.uk) | [www.zoopla.co.uk](http://www.zoopla.co.uk)**

Property Ref: NHT415251 - 0002