

## 4 Eagle Yard, King's Lynn PE30 1RG

Offers Over £200,000

🛏 2 🚿 1 🚗 1



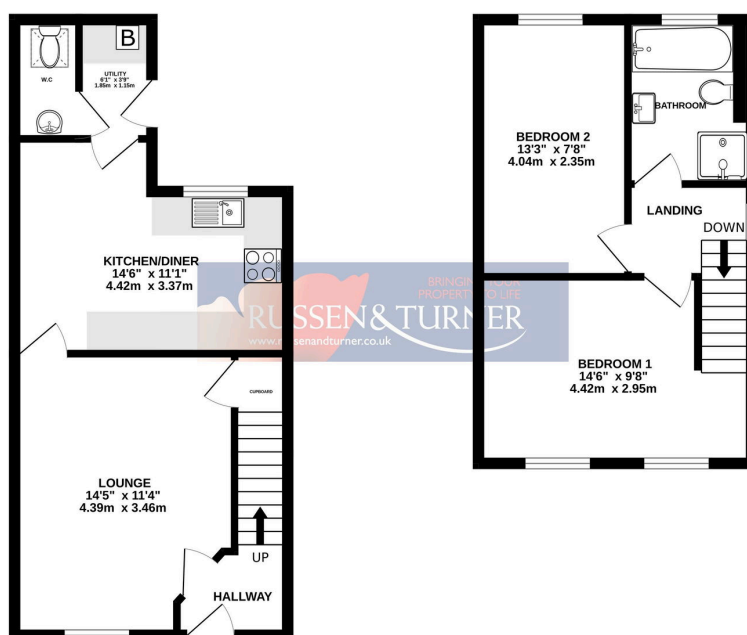
If you're looking for a home where you can move straight in and start making memories, this beautifully presented two-bedroom semi-detached property could be just what you've been searching for. With its modern style, thoughtful layout, and welcoming feel, it's the perfect choice for first-time buyers or young couples ready to take their next steps and enjoy the ease of a move-in ready home.

## Key Features

- Semi-detached house
- Ideal first home
- Walking distance to train station
- Allocated parking space
- Utility
- Two double bedrooms
- Close to local schools, shops and town centre
- Move in ready
- Council tax band A
- Downstairs w/c

GROUND FLOOR  
385 sq.ft. (35.8 sq.m.) approx.

1ST FLOOR  
319 sq.ft. (29.6 sq.m.) approx.



TOTAL FLOOR AREA: 704 sq.ft. (65.4 sq.m.) approx.

Whilst every attempt has been made to ensure the accuracy of the floorplan contained herein, measurements of doors, windows, rooms and any other items are approximate and no responsibility is taken for any error, omission or mis-statement. This plan is for illustrative purposes only and should be used as such by any prospective purchaser. The services, systems and appliances shown have not been tested and no guarantee as to their operability or efficiency can be given.  
Made with Metropix 12025