





Features

- Guide Price £800,000 to £845,000
- Imposing Five Bedroom, Bay-Fronted, Stone Built Character Home
- Spacious, Immaculately Presented Accommodation
- Commanding Forward Views Over Whaley Bridge
- Charming, Private, Mature Grounds with Ample Parking
- Sought After and Convenient Location
- Stunning Living Dining Kitchen With Island
- An Abundance of Beautiful Features

Guide Price £800,000 to £845,000. Standing in a quarter acre of mature grounds within one of the most sought after locations in Whaley Bridge, an imposing, stone-built, semi-detached period property. Beautifully presented and offering spacious, versatile accommodation suitable for most buyers, this wonderful executive home has to be seen. Blending a wealth of character features with the contemporary must haves making this the perfect home for the cosy Winter nights or those Summer evenings entertaining guests on the terrace. Fantastic forward views and convenient for all local amenities including railway station and shops.

The property comprises: contemporary glazed entrance porch, hall with original tiled floor, cloaks/wc, utility room, bay fronted living room, 25ft open plan living dining kitchen with central island, separate 18ft sitting room, first floor master bedroom with fitted wardrobes and en-suite shower, four further bedrooms and a family bathroom.

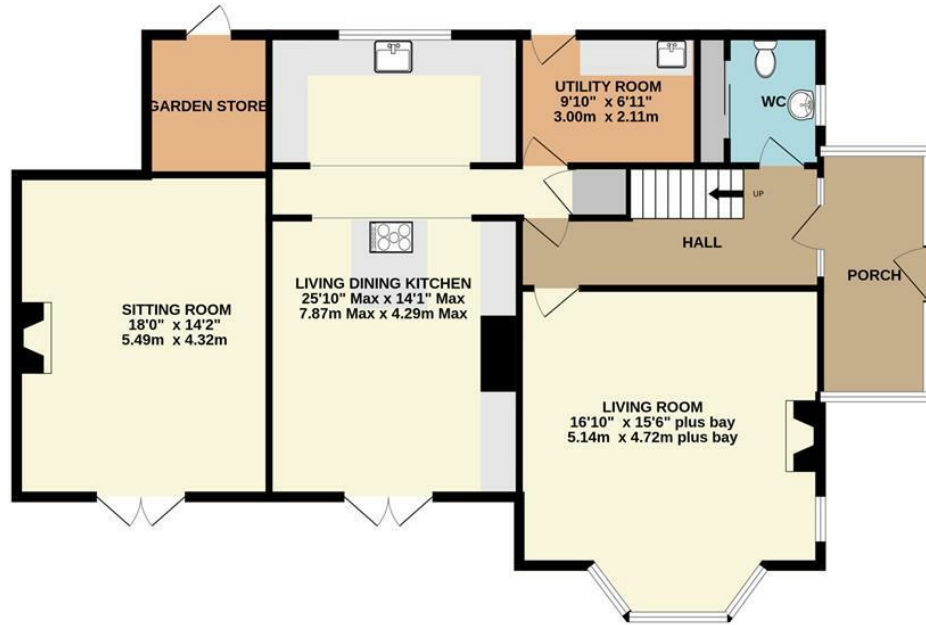
Ample gated, driveway parking and secluded private gardens, full of hidden seating areas to appreciate every aspect and every view. Complimented by a traditional lawn and sun terrace.



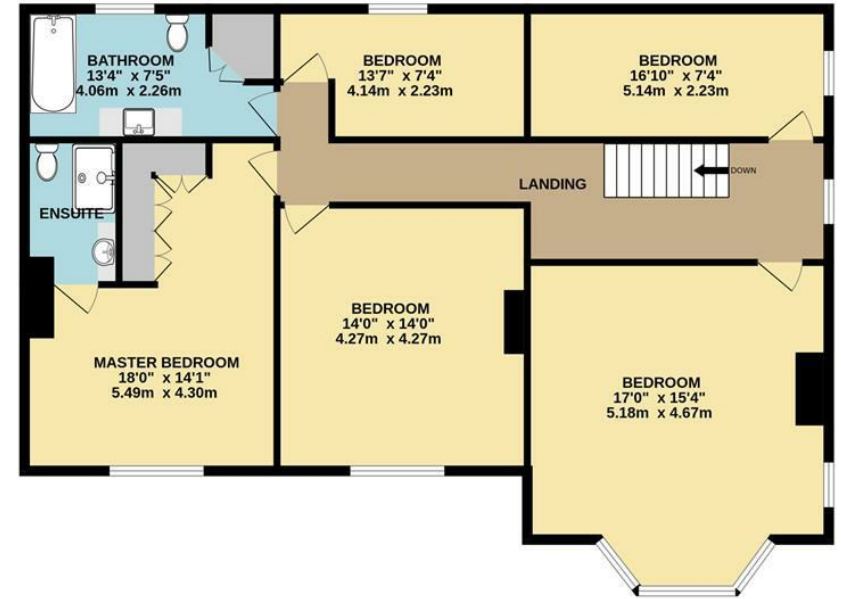
Whaley Bridge is a town in the High Peak district of Derbyshire. An excellent position to enjoy the open countryside of the Peak District and popular Lyme Park close by. Coupled with superb transport links for road and rail nearby. Amenities in Whaley Bridge include: infant schools, independent shops, supermarkets, public houses and restaurants. Whaley Bridge is ideally placed on the Manchester Piccadilly to Buxton railway line and is perfect for the new relief road (A555) to Manchester airport. A few miles out of Macclesfield with a wider range of private schools, shops and railway line from Manchester to London.



GROUND FLOOR



1ST FLOOR



Whilst every attempt has been made to ensure the accuracy of the floorplan contained here, measurements of doors, windows, rooms and any other items are approximate and no responsibility is taken for any error, omission or mis-statement. This plan is for illustrative purposes only and should be used as such by any prospective purchaser. The services, systems and appliances shown have not been tested and no guarantee as to their operability or efficiency can be given.
 Made with Metropix ©2026



IMPORTANT: we would like to inform prospective purchasers that these sales particulars have been prepared as a general guide only. A detailed survey has not been carried out, nor the services, appliances and fittings tested. Room sizes should not be relied upon for furnishing purposes and are approximate. If floor plans are included, they are for guidance only and illustration purposes only and may not be to scale. If there are any important matters likely to affect your decision to buy, please contact us before viewing the property.



JORDAN FISHWICK
EXCLUSIVE

Jordan Fishwick
14 Market Street, Disley, Cheshire, SK12 2AA
01663 76 78 78
disley@jordanfishwick.co.uk