



Springfield Road, TW11
£925,000

Dexters



Springfield Road, TW11

This stunning Victorian house is located in central Teddington close to all the local amenities. The house is immaculately presented with an open plan living/kitchen/dining room to the rear.

Entering the house into a beautiful bright reception room which has a pretty fireplace and fitted alcove cupboards. The ground floor extension to the rear opens up to a sociable living/dining and entertaining space. The modern kitchen opens to the second reception and dining room with a breakfast bar plus integrated appliances making an excellent space for a family or entertaining. This then leads out onto the secluded garden.

On the first floor there are two generous double bedrooms and a family bathroom, the top floor has a master bedroom with an en suite shower room, dressing area and separate storage/office space plus additional eaves storage

Springfield Road is off Field Lane which is a quiet yet central location. Teddington mainline station is within easy reach, as is the High Street with shops, bars and restaurants. Bushy Park and The River Thames are close by and school catchment is excellent.

Features

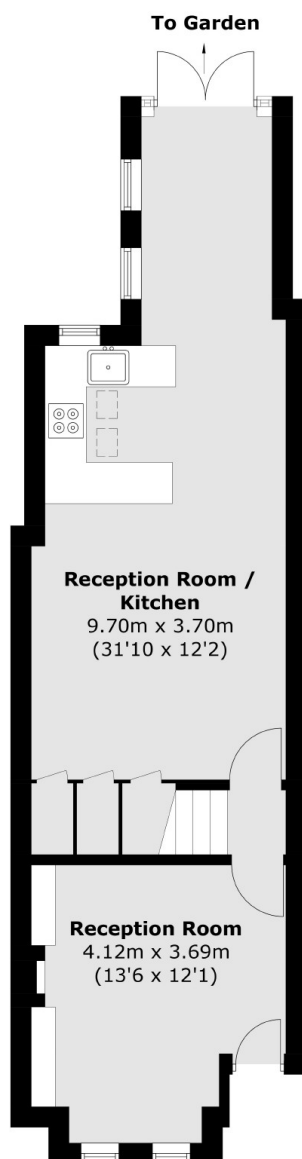
- Victorian
- High Street Location
- Excellent School Catchment
- Newly Decorated
- Secluded Garden
- Beautiful Loft Extension



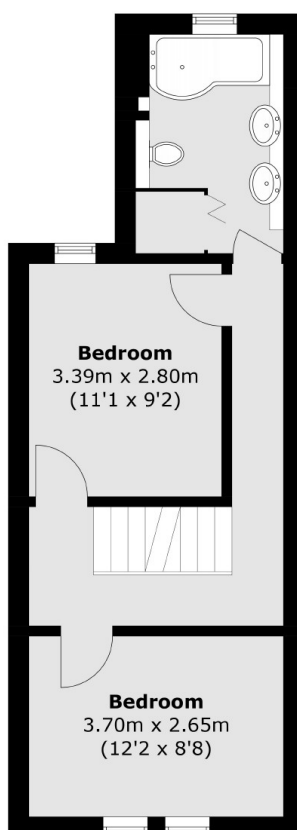




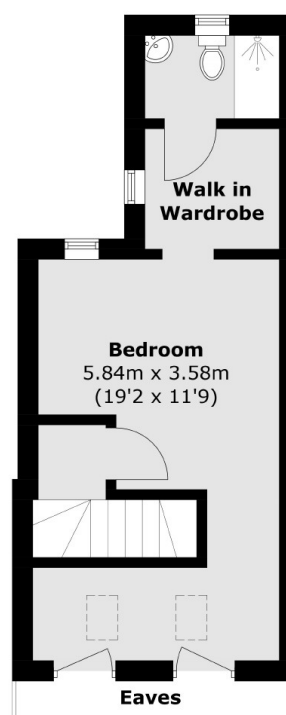
Springfield Road, Teddington, TW11



Ground Floor



First Floor



Second Floor

Total area (approx.): 111.5 sq. m (1,200.1 sq. ft)
(Excluding Eaves)