



Upper Ground, SE1 £675,000

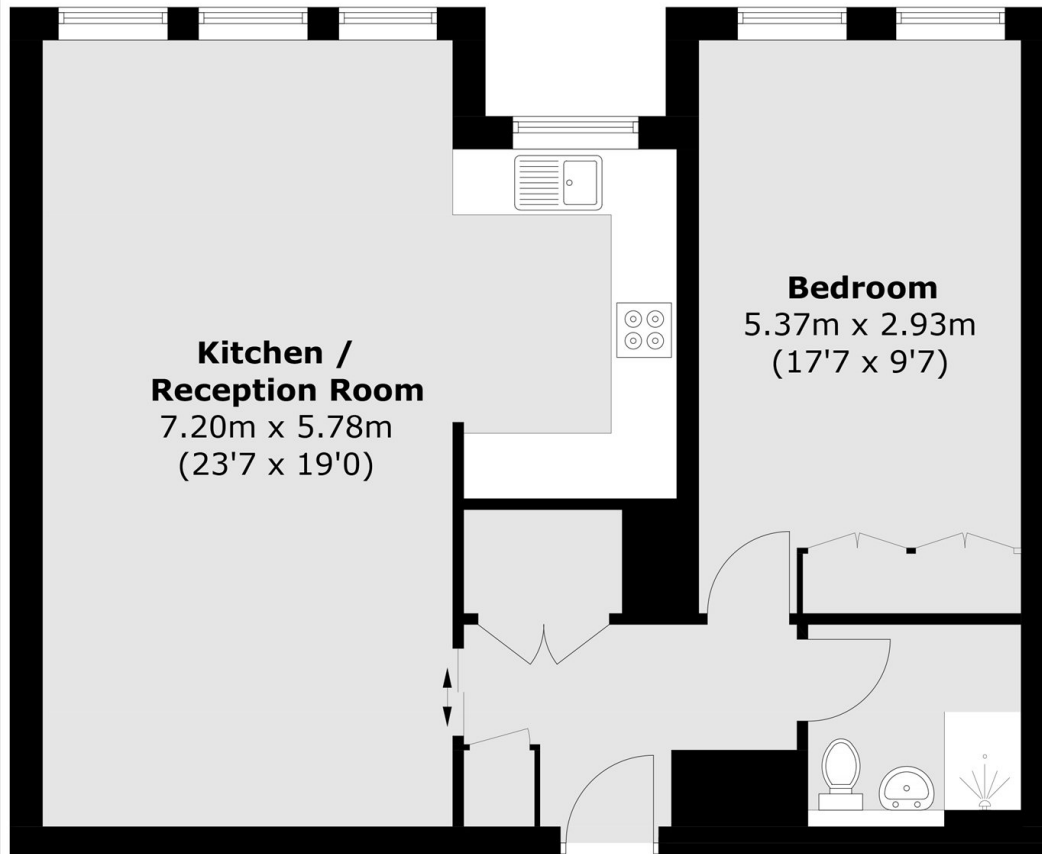
A highly attractive, fully refurbished seventh-floor flat in an iconic riverside development, featuring a bright southerly aspect, a spacious open-plan living room and kitchen, a generous double bedroom, a stylish three-piece shower-room, plus secure off-street parking, communal terraces, and a 24-hour concierge. Offers in excess of £675,000

Enviably situated along the River Thames in London's vibrant South Bank, this location places you at the heart of the city's cultural scene. Moments away are iconic attractions including the Tate Modern, Shakespeare's Globe, and Borough Market, with excellent transport links via Blackfriars, Waterloo, Southwark, and London Bridge stations nearby.

Features

- Offers in excess of £675,000
- Riverside Development
- Fully Refurbished
- Long Extended Lease
- Secure Underground Parking
- 24 Hour Concierge
- Chain Free Sale

Upper Ground, London, SE1



Total area (approx.): 62.3 sq. m (670.6 sq. ft)

Dexters

London Bridge
54 Borough High Street
London
SE1 1XL
Sales
020 7650 5 100

Energy Rating: . We aim to make our particulars both accurate and reliable. However they are not guaranteed; nor do they form part of an offer or contract. If you require clarification on any points then please contact us, especially if you're traveling some distance to view. Please note that appliances and heating systems have not been tested and therefore no warranties can be given as to their good working order.

 **RICS** | Regulated
Estate Agent
and Letting Agent

dexters.co.uk