



Apt 28, 151 Great Ancoats Street, Manchester

Offers in Region of £255,000

Miller Metcalfe
Every step of the way

Apartment 28

151 Great Ancoats Street, Manchester

This well-presented two-bedroom apartment is situated within the highly sought-after Islington Wharf development, located in the vibrant New Islington area of Manchester. Positioned on the sixth floor, the property offers modern city living within easy reach of Ancoats, the Northern Quarter, and Manchester city centre.

The apartment features a spacious open plan living, dining, and kitchen area, designed to maximise natural light and functionality. The contemporary kitchen is fitted with a range of integrated appliances. Large windows enhance the living space, while glass doors leading onto a balcony overlooking the canal, providing a pleasant outdoor retreat.

There are two generously sized double bedrooms, with the principal bedroom benefiting from a private en-suite shower room. The second bedroom is served by a stylish Jack-and-Jill bathroom, accessible from both the bedroom and the main living area. Additional features include a utility cupboard with plumbing for a washing machine, wooden-style flooring in the living space, and carpeted bedrooms.

Residents benefit from a secure communal entrance with lift and stair access. The development is ideally located close to a Metrolink stop, offering convenient transport links across the city, while Manchester Piccadilly Station is also within easy reach.

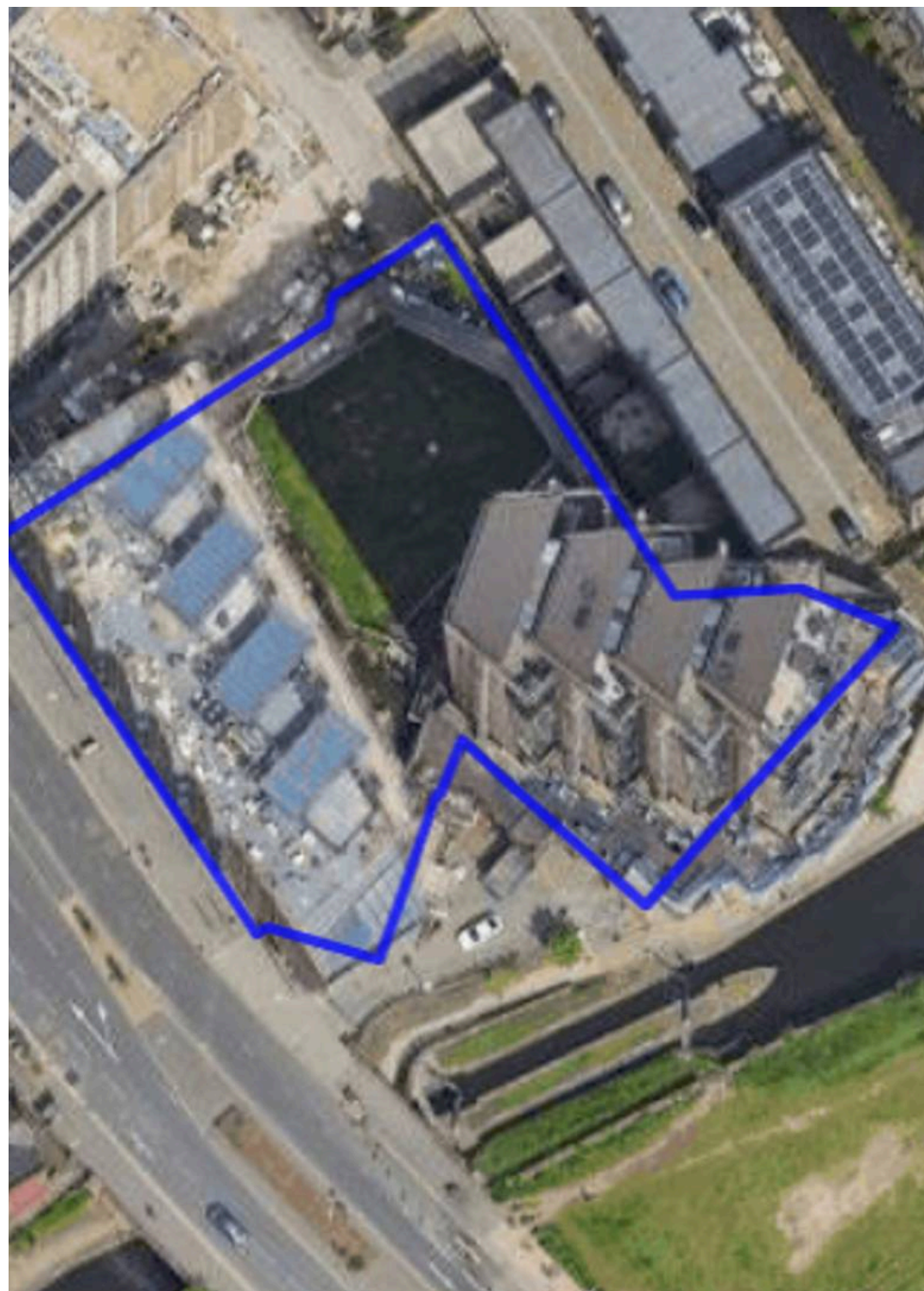
This property is ideal for both owner-occupiers and investors seeking a modern apartment in a prime central location.

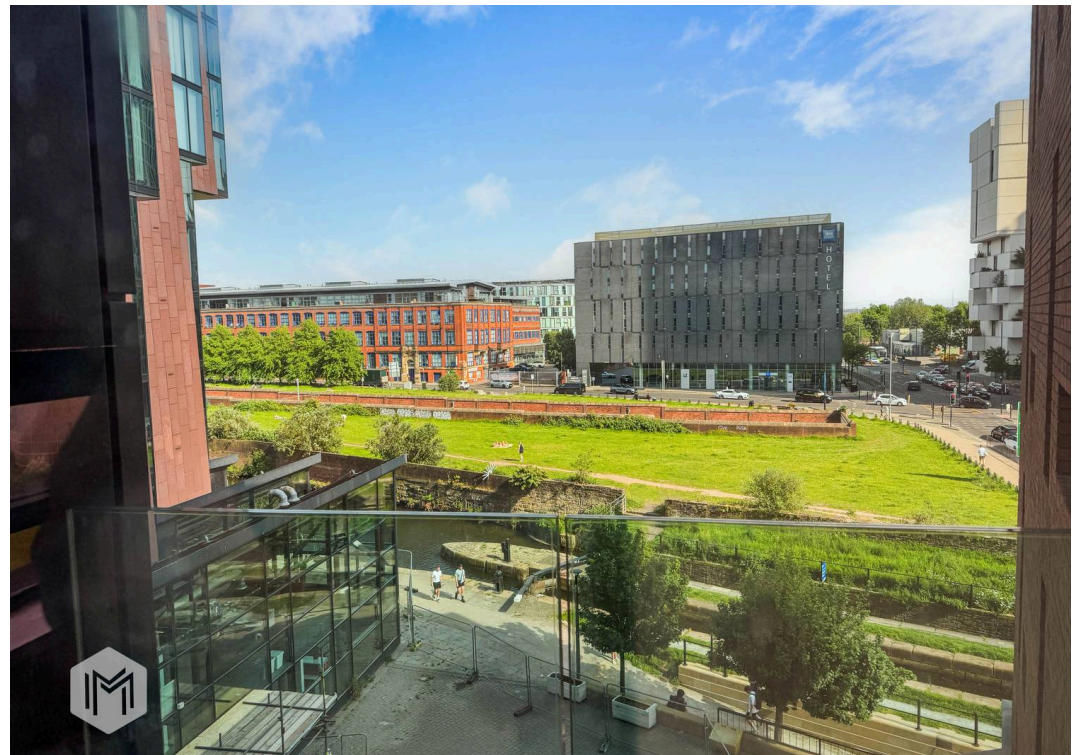
Council Tax band: D

Tenure: Leasehold

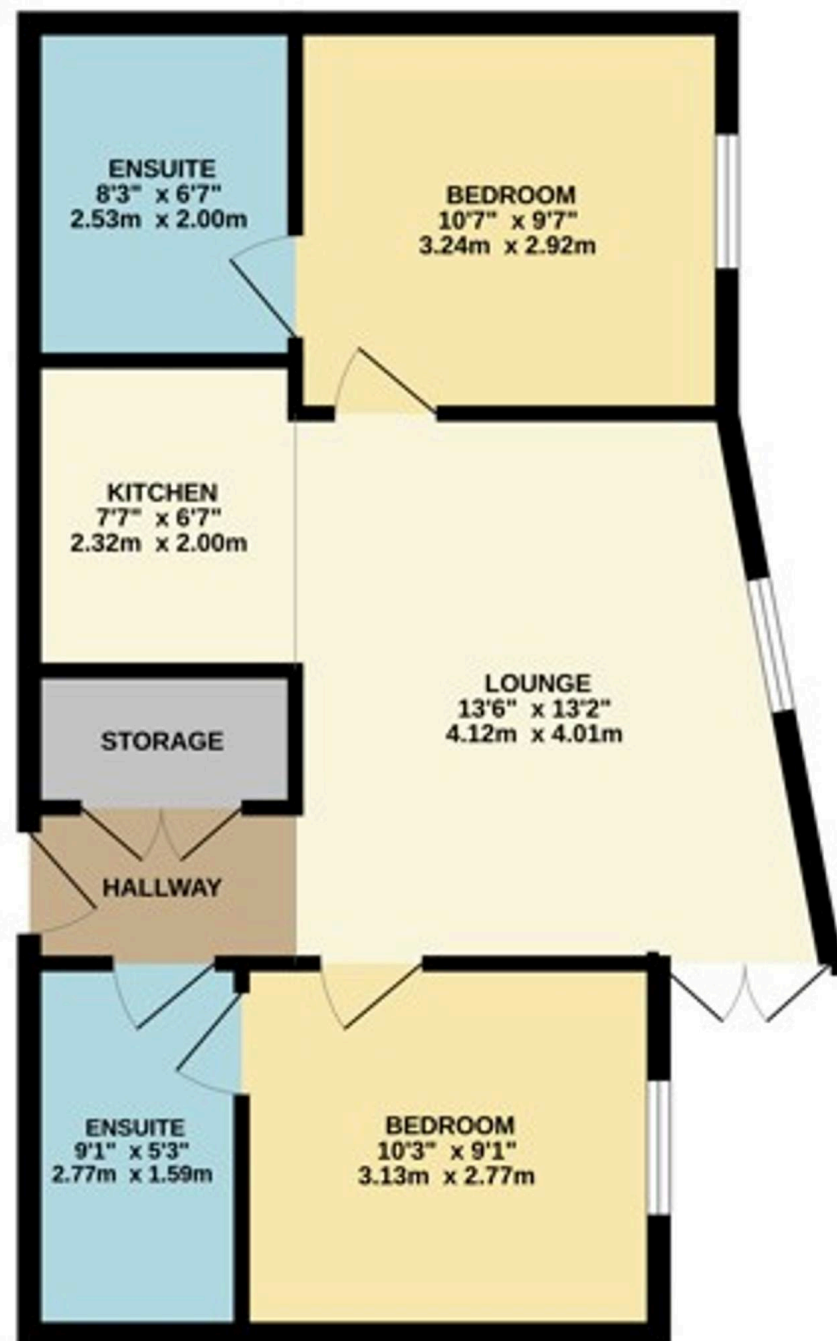
EPC Energy Efficiency Rating: B

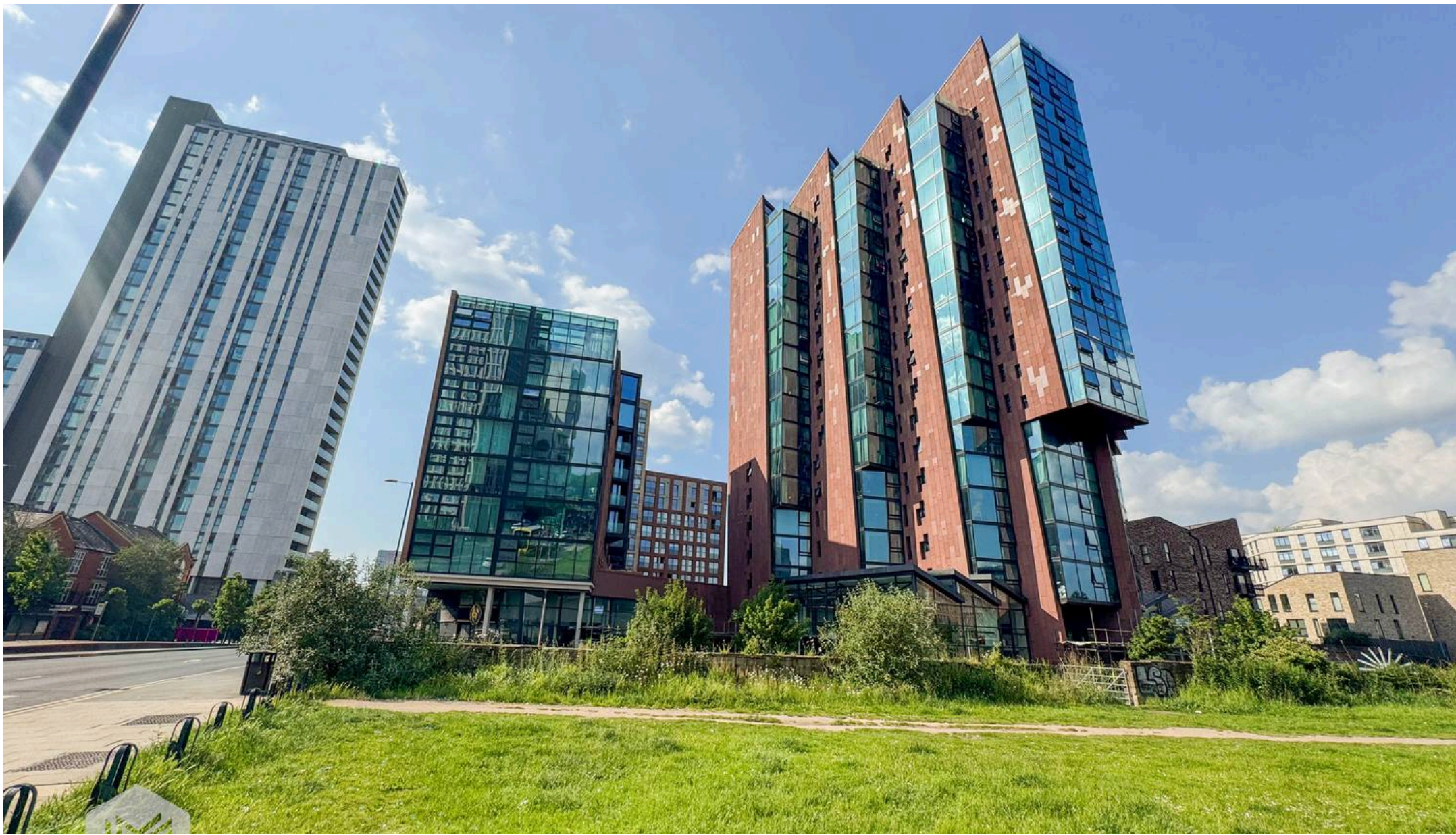
EPC Environmental Impact Rating: B











Miller Metcalfe Worsley

78 Manchester Road, Worsley - M28 3LN

01617949798 • worsley@millermetcalfe.co.uk • millermetcalfe.co.uk/

Miller Metcalfe
Every step of the way