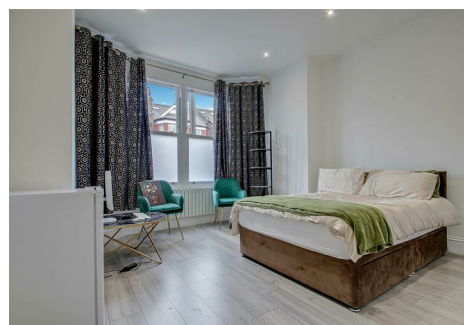
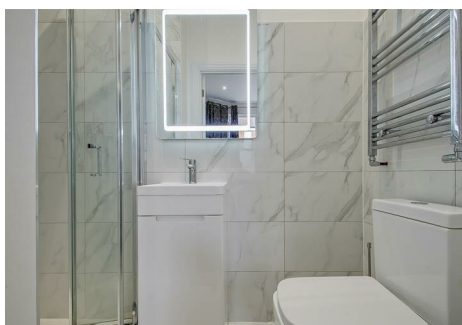
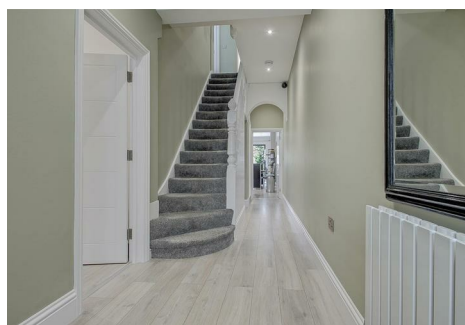


est 1979

Jeremy
Leaf & Co.



Nether Street, London

£1,125,000

- Six Bedrooms
- Main Bathroom
- Three Further Bath/Shower Rooms (one en-suite)
- Outbuilding with Power Supply
- 0.5 miles to West Finchley and Woodside Park Tubes
- Two Receptions
- Kitchen/Diner
- Separate W.C.
- Top Floor Bedrooms with Kitchen Area
- Proximity to Dollis Green Walk and Finchley Central's Amenities

863 High Road, London, N12 8PT
020 8446 4295

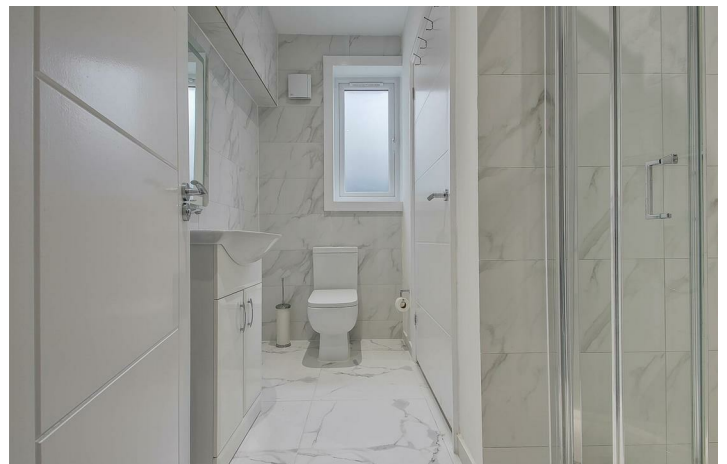
property@jeremyleaf.co.uk
<https://www.jeremyleaf.co.uk/>

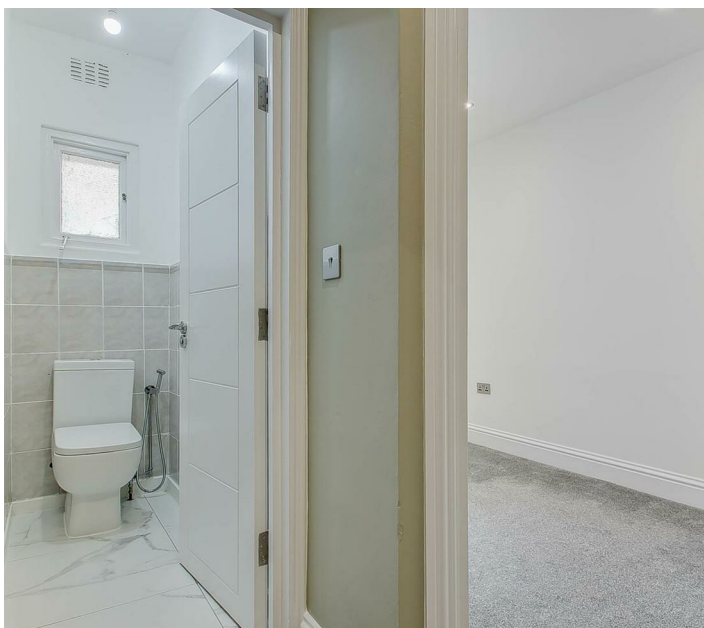
Nether Street, London N12 7NP

A substantial, recently renovated terrace house retaining many original features and arranged over three floors with the top floor bedroom benefiting from an additional kitchenette. This impressive family home comprises six bedrooms, three reception rooms, four bathrooms (one en-suite and two on the ground floor), and extended kitchen/diner leading to a secluded garden with a summer house. Please see our virtual tour to appreciate the scale and scope of the property. Situated 0.5 miles to both Woodside Park and West Finchley (Northern Line) tube stations, the property is well -positioned for sought-after schools and the shopping and amenities of Finchley Central and the green spaces of the Riverside Walk. Offered chain free, viewing is highly recommended.



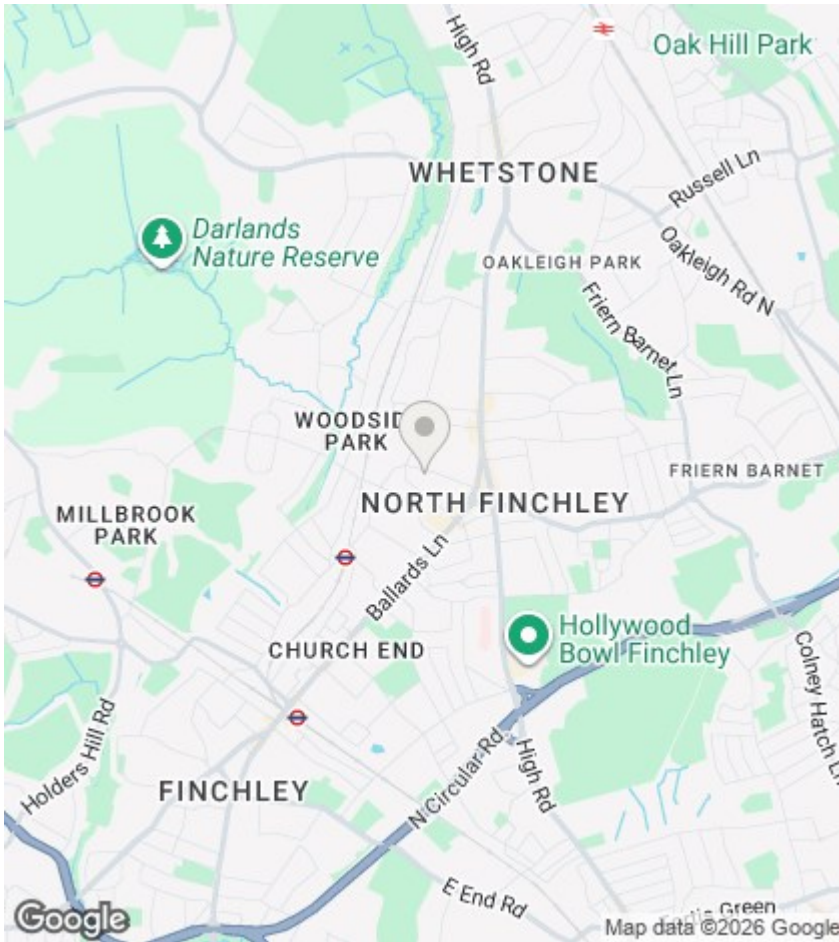
Council Tax Band: G











Directions

Viewings

Viewings by arrangement only. Call 020 8446 4295 to make an appointment.

EPC Rating:

Energy Efficiency Rating		Current	Potential
<i>Very energy efficient - lower running costs</i>			
(92 plus) A			
(81-91) B			
(69-80) C			
(55-68) D			
(39-54) E			
(21-38) F			
(1-20) G			
<i>Not energy efficient - higher running costs</i>			
England & Wales		EU Directive 2002/91/EC	

