



Brompton Road, SW3

£866 Per week

A well-presented two bedrooms, two bathrooms flat situated on the fourth floor of a highly sought after development in Knightsbridge. The property features a separate kitchen and offers a 24-hour concierge service. Ideally suited for professional sharers or a small family.

Ideally situated directly opposite the renowned Harrods department store, Knightsbridge offers an extensive selection of amenities, including a variety of high-end restaurants, bars, shops and cafés.

Features

- Two Bedrooms
- Two Bathrooms
- Lift
- Lateral
- Wood floors
- 24-hour concierge

Brompton Road, London, SW3

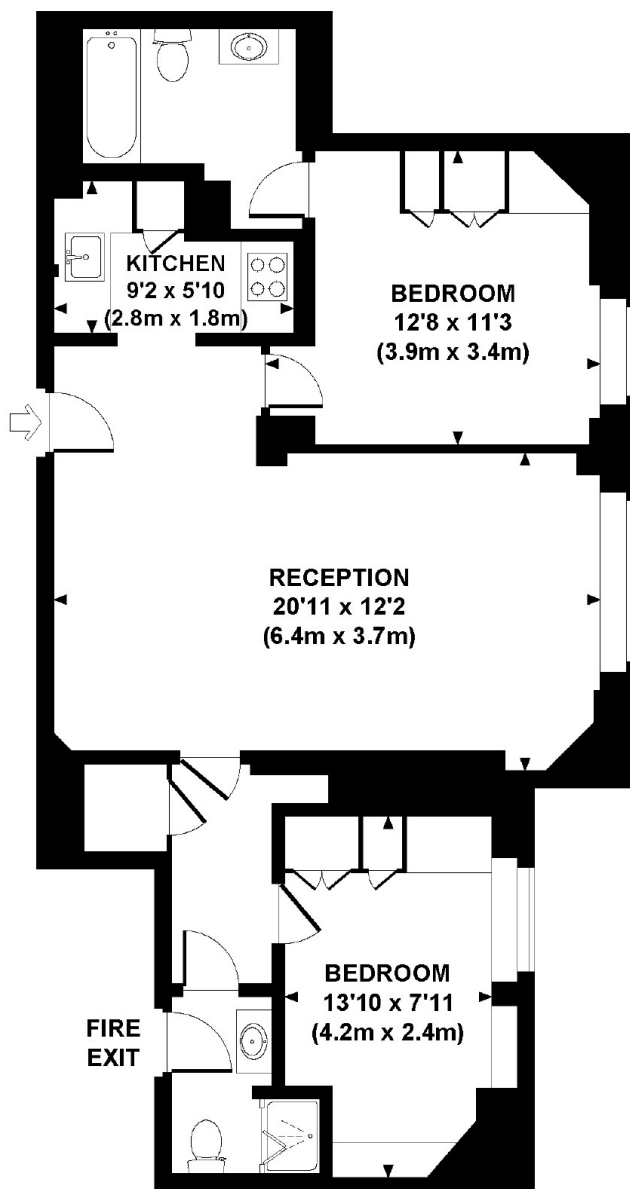
PRINCES COURT, BROMPTON ROAD, SW3

Approx. gross internal area

720 Sq Ft. / 66.9 Sq M.

Representation of current layout.

Not to scale.



FOURTH FLOOR