



NORMINGTON CLOSE, SW16

£695,000

- Four bedrooms
- Modern finish
- Off-street parking
- Private cul-de-sac
- Townhouse style
- Energy rating: C

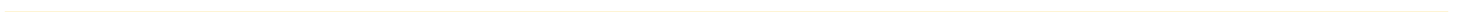




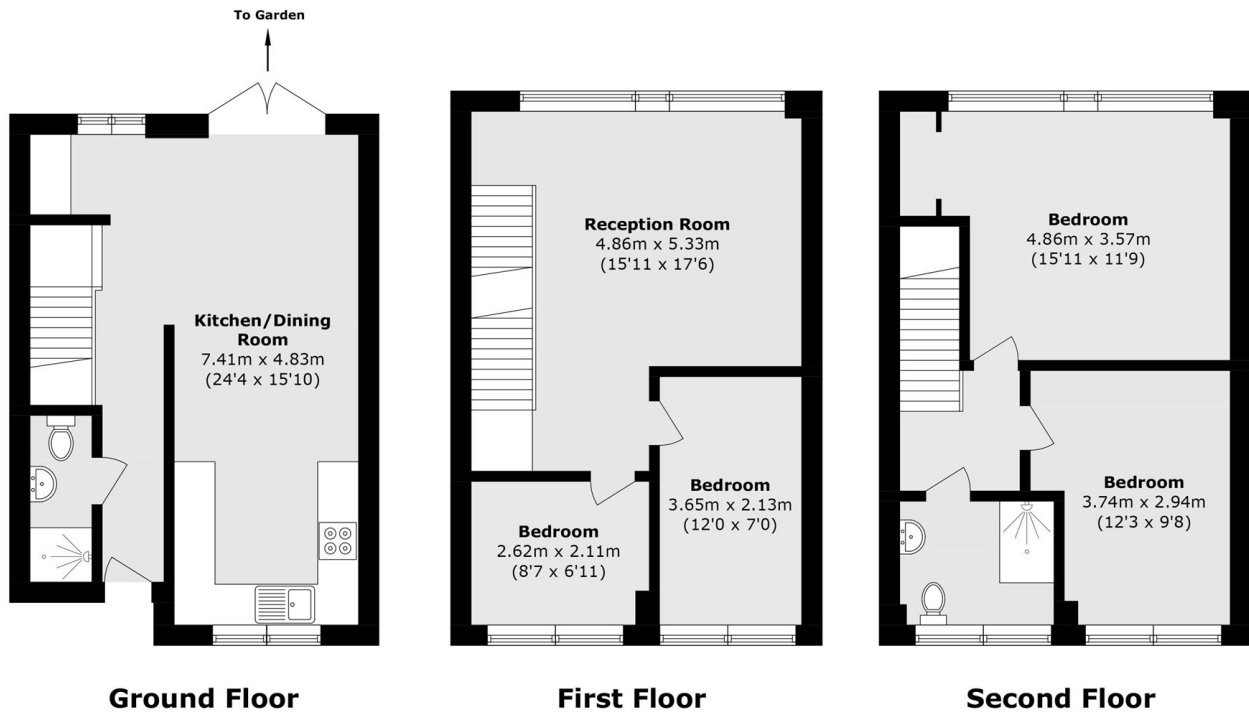
ABOUT THE HOME

A mid terraced four bedroom town house finished to a modern standard located in a private residential cul-de-sac. The property benefits from a private driveway and garden.

Normington Close provides easy access to both Streatham Hill and West Norwood mainline stations providing rail links to London Victoria via Clapham Junction. Streatham High Road can be reached via bus routes along Leigham Court Road while Streatham Common and the Rookery are also close by.







Total area (approx.): 107.2 sq. m (1153.9 sq. ft)

JACKSONS STREATHAM

1-3 De Montfort Parade,
 Streatham High Road,
 Sales: 020 8487 3179
 Lettings: 020 8487 3180

Energy Rating: C We aim to make our particulars both accurate and reliable. However they are not guaranteed; nor do they form part of an offer or contract. If you require clarification on any points then please contact us, especially if you're traveling some distance to view. Please note that appliances and heating systems have not been tested and therefore no warranties can be given as to their good working order.