



Sidmouth Road, NW2

Share of Freehold - £499,950

FOR SALE is this well presented, generous sized apartment offering over 1237 sq ft of well maintained internal living space that is situated on the Ground Floor of this elegant 1930s Art Deco Mansion Block, within the popular area of Brondesbury Park.

The apartment boasts a large reception room, modern eat-in kitchen, separate WC, wooden flooring throughout with three large double bedrooms and a single bedroom, shower room and lots of storage. There are many outstanding original features of the 1930s throughout the apartment and the building.

Externally, the kitchen leads onto a large communal garden along with on-going upgrades.

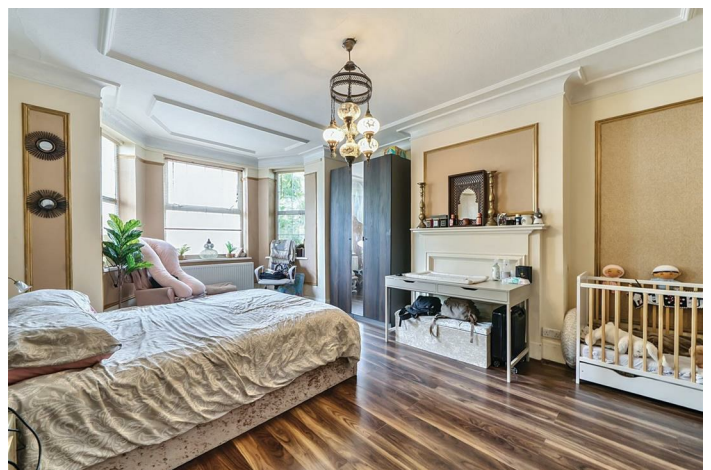
Clarendon Court is located in Brondesbury Park with the amenities of Willesden Green, Queen's Park and Kensal Rise within walking distance. Excellent transport links, including Willesden Green (Jubilee - Zone 2) and Kensal Rise (Overground - Zone 2).

- Stunning apartment with 1237 sq ft of living space
- 4 bedrooms and large reception with storage
- Access to large communal garden
- Transport Links: Willesden Green & Kensal Rise (Zone 2)
- Council: Brent (E)

020 7328 2828

enquiries@cameronsstiff.co.uk

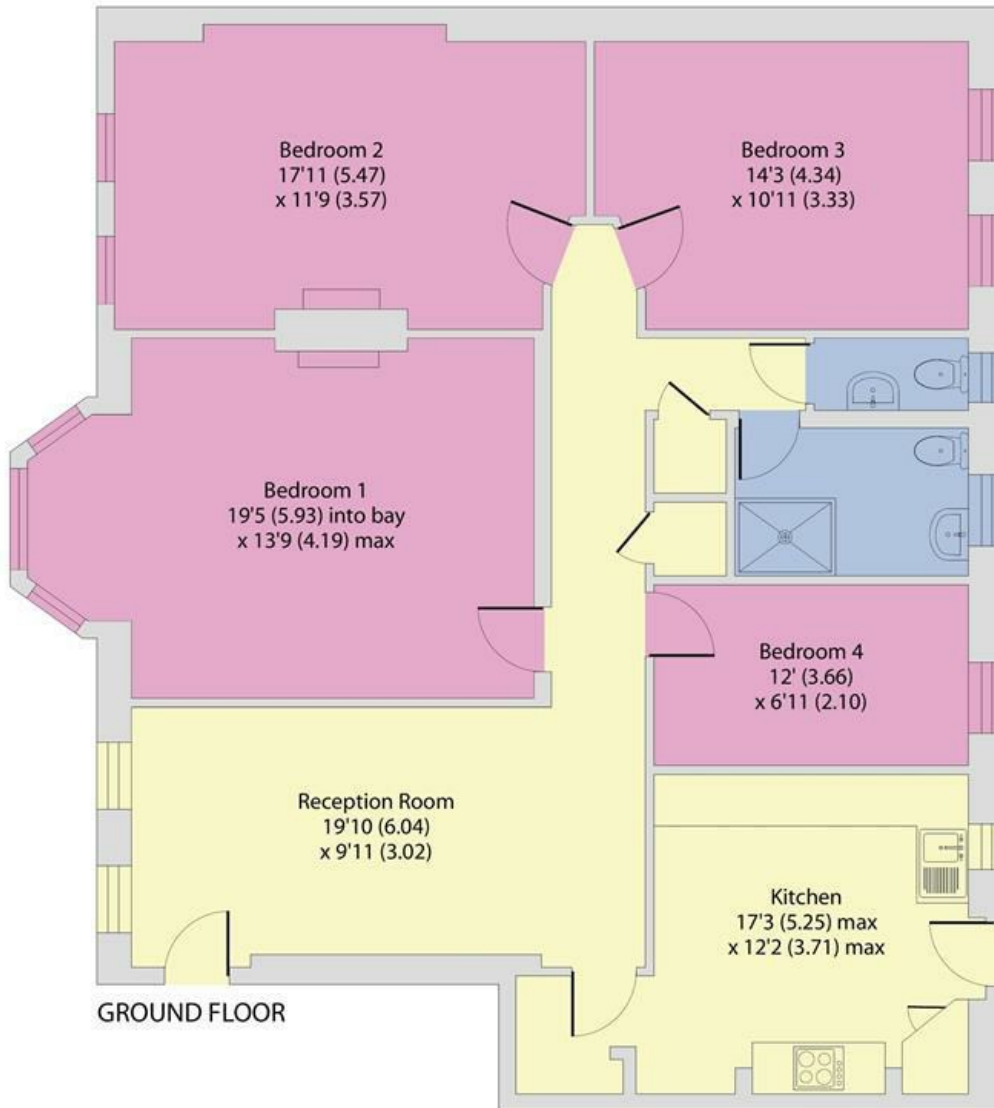
cameronsstiff.co.uk



Clarendon Court, Sidmouth Road, London, NW2

Approximate Area = 1241 sq ft / 115.2 sq m

For identification only - Not to scale



 Floor plan produced in accordance with RICS Property Measurement 2nd Edition, Incorporating International Property Measurement Standards (IPMS2 Residential). © nichecom 2025. Produced for Camerons Stiff & Co. REF: 1332200

EPC: C
Ref: 19469301

