



© & COUNTRY

4 Emma Place Ope, Stonehouse, Plymouth, Devon, PL1 3FD



Price £220,000



Situated on the first floor of a modern and secure development, this beautifully appointed apartment enjoys a highly convenient position between Plymouth City Centre and the vibrant Royal William Yard. The picturesque Cremyll Ferry is just a short stroll away, offering easy access to the stunning parkland, coastline and walking trails of Mount Edgumbe.

Finished to an impressive specification throughout, the property combines contemporary design with practical living. A welcoming entrance hall provides useful storage and leads through to a superb open plan kitchen and living space, flooded with natural light and enjoying access to a private balcony. The stylish English Rose handleless kitchen features contrasting grey and anthracite units, granite work surfaces and a range of integrated Neff appliances, creating a sleek and sociable space ideal for both everyday living and entertaining.

The accommodation offers two generous double bedrooms, both benefiting from built-in wardrobes. The principal bedroom enjoys the added luxury of a contemporary en-suite shower room, while the main bathroom is finished to an equally high standard with quality sanitary ware, Amtico flooring, an illuminated mirror with demister and a heated towel rail.

Further features include underfloor heating throughout, an Ideal gas combination boiler, engineered oak flooring to the hallway and living areas, USB charging points, television and Virgin Media connections, and a video entry system.

Residents also benefit from secure allocated parking behind remote controlled entrance gates, lift access, secure cycle storage with wash-down facilities, infrastructure for electric vehicle charging points and beautifully finished communal areas.

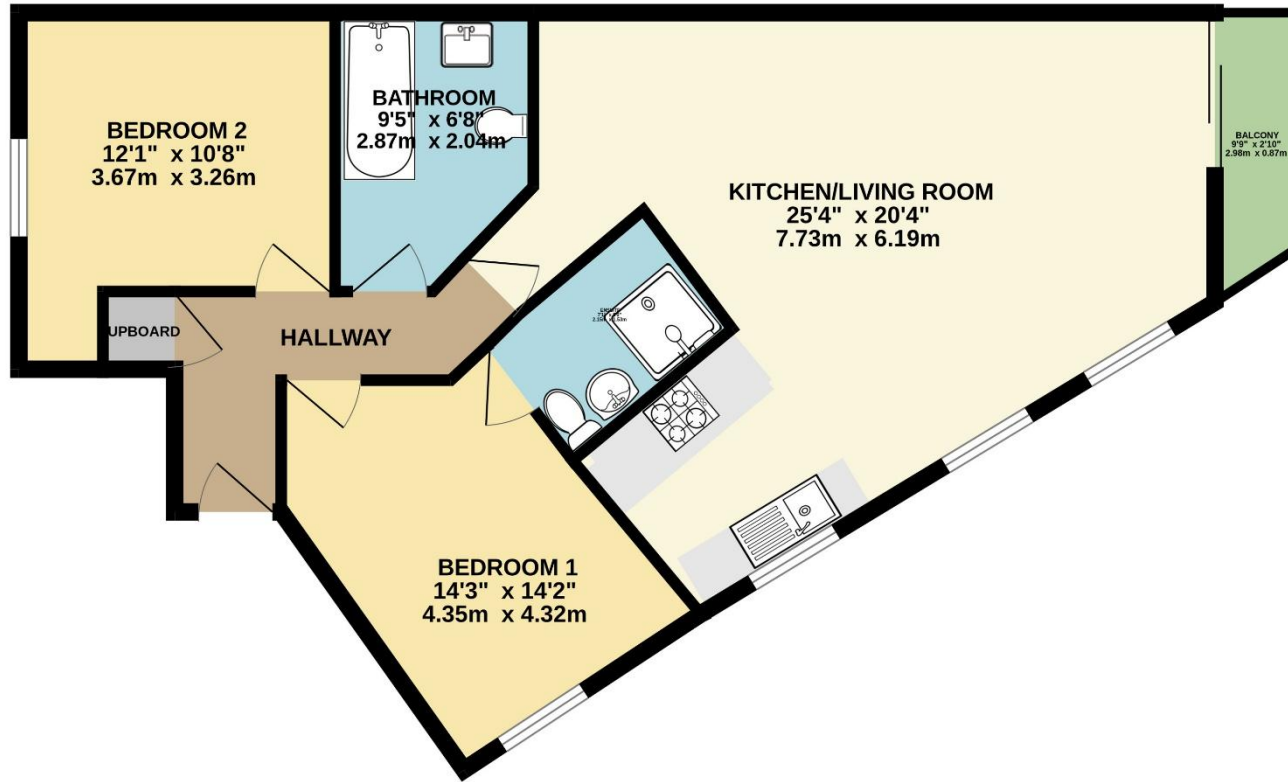
A superb first floor apartment offering stylish modern living in one of Plymouth's most sought-after waterfront locations, perfectly positioned for the city centre, Royal William Yard and the waterfront amenities that make this area so desirable.



To view this property call Lang Town & Country Estate Agents on [01752 200909](tel:01752 200909)

www.langtownandcountry.com





TOTAL FLOOR AREA : 700 sq.ft. (65.0 sq.m.) approx.

Whilst every attempt has been made to ensure the accuracy of the floorplan contained here, measurements of doors, windows, rooms and any other items are approximate and no responsibility is taken for any error, omission or mis-statement. This plan is for illustrative purposes only and should be used as such by any prospective purchaser. The services, systems and appliances shown have not been tested and no guarantee as to their operability or efficiency can be given.
Made with Metropix ©2026



Lang Town & Country
6 Mannamead Road
Plymouth
PL4 7AA
Tel: 01752 200909
Email: waterside@langtownandcountry.com
www.langtownandcountry.com

Lang Town & Country endeavour to ensure the accuracy of property details produced and displayed, we have not tested any apparatus, equipment, fixtures, fittings or services and so cannot verify that they are connected, in working order or fit for purpose. A buyer must check the availability of any property and make an appointment to view before embarking on any journey to see a property.

