

Firth Park Crescent, Halesowen, B62 9PG

Offers In Region Of £230,000

 3  1  2

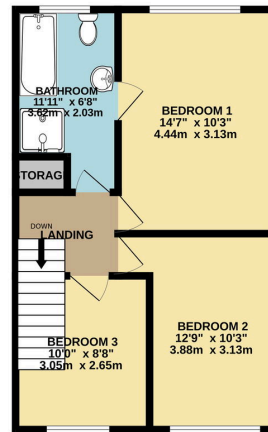
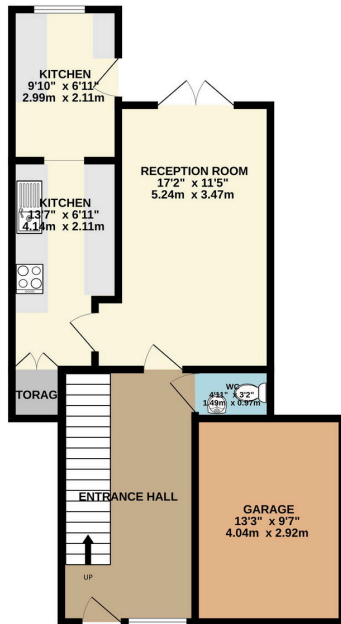


- Perfect for first time buyers
- Off road parking & garage
- Prime Hurst Green location on a desirable estate
- Bathroom with separate bath & shower
- Very well presented throughout
- Three bedrooms
- Downstairs WC
- Extended kitchen
- Separate dining area
- Easy to maintain landscaped rear garden



GROUND FLOOR
627 sq.ft. (58.3 sq.m.) approx.

1ST FLOOR
462 sq.ft. (42.9 sq.m.) approx.



TOTAL FLOOR AREA: 1089 sq.ft. (101.2 sq.m.) approx.
While every attempt has been made to ensure the accuracy of the floorplan contained herein, measurements of doors, windows, rooms and any other items are approximate and no responsibility is taken for any error, omission or mis-statement. This plan is for illustrative purposes only and should be used as such for any prospective purchase. The services, systems and appliances shown have not been tested and no guarantee as to their operability or efficiency can be given.
Made with Metropix ©2025

Perfect for first time buyers! This is a beautifully presented three bedroom home in a prime Hurst Green location.