



VISAGE HOUSE LANSDOWN PLACE LANE, CHELTENHAM, GL50 2LB

VISAGE HOUSE IS A STUNNING MEWS STYLE HOME NESTLED BETWEEN SIMILAR CALIBRE PROPERTIES ON A PRETTY, QUIET LANE. CONSIDERATELY AND EXTENSIVELY REFURBISHED TO RETAIN THE CHARACTER WITH A SEAMLESS MODERN AND LUXURIOUS FINISH.

Visage House is a beautifully converted mews-style home, set among similarly attractive properties on a quiet and picturesque lane. It has been thoughtfully and extensively refurbished to preserve its original charm while introducing a refined, contemporary finish.

The accommodation is well designed and perfectly balanced. The ground floor offers a spacious sitting room with a log burner, alongside a stylish, fully fitted kitchen with high-quality finishes. Upstairs, the first floor comprises a principal bedroom and a guest bedroom, both served by an elegant bathroom featuring a centre fill bath and separate shower, with sanitaryware by Duravit.

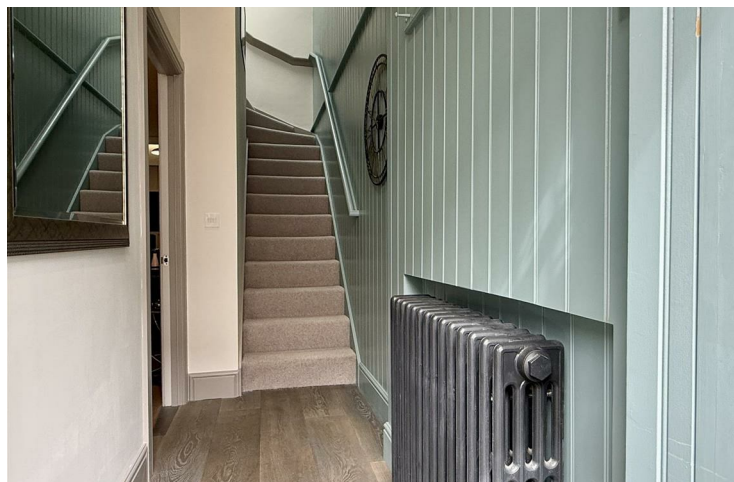
The property is rich in character, with notable features including high ground-floor ceilings, vaulted beamed ceilings in the bedrooms, Victorian-style radiators, panelled walls, and wooden flooring throughout.

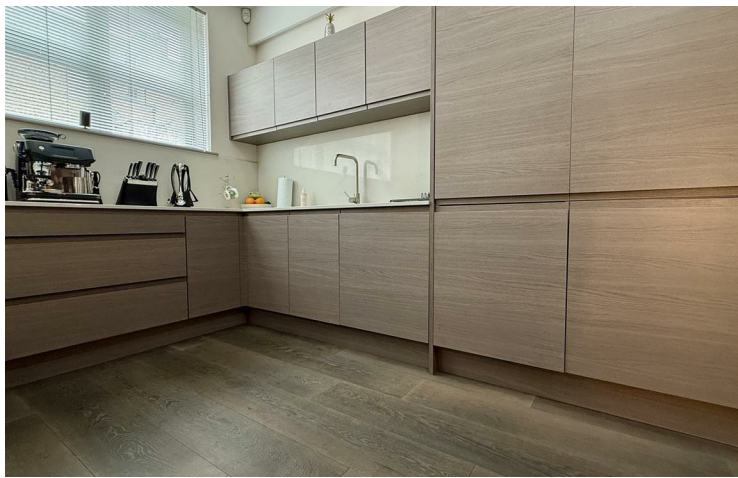
Conveniently located in central Cheltenham, the property is within easy walking distance of Cheltenham Spa railway station, approximately 1.0–1.3 miles away (around a 20–25 minute walk) via a straightforward, mostly flat urban route. The shops, bars and restaurants of Montpellier are within a 5 minute walk.

Combined with its tasteful presentation and excellent location, Visage House presents an exceptional opportunity as a charming home or a high-end rental or Airbnb.

Tenure: Freehold
EPC: C
Council Tax: C
Area: 905.00 sq ft
Property Ref: 19732580

48 Andover Road, Cheltenham, GL50 2TL
Tel: 01242 241122 **Email:** post@readmaurice.co.uk







Approximate Gross Internal Area = 905 sq ft / 84.1 sq m

Illustration for identification purposes only, measurements are approximate and are not to scale.
Please check all details before making any decisions reliant upon them.
Copyright Read Maurice. (ID1292996)



VISAGE HOUSE LANSDOWN PLACE LANE, CHELTENHAM, GL50 2LB

These particulars, whilst believed to be accurate are set out as a general outline only for guidance and do not constitute any part of an offer or contract. Intending purchasers should not rely on them as statements or representation of fact, but must satisfy themselves by inspection or otherwise as to their accuracy. We have not carried out a detailed survey nor tested the services, appliances and specific fittings. Room sizes should not be relied upon for carpets and furnishings. The measurements given are approximate. No person in this firm's employment has the authority to make or give any representation or warranty in respect of the property. PRN: 18128602 - Date of printing 7th May 2026
Read Maurice Residential Limited is registered in England No. 04302959