

Barnet Drive, Bromley, BR2

5 4 2

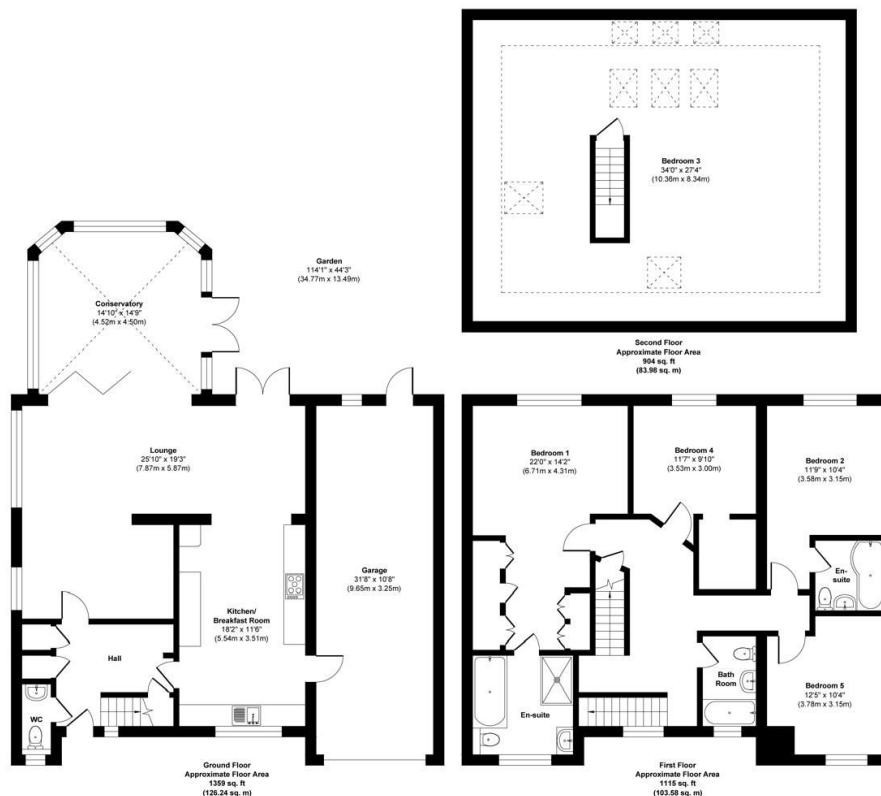


Barnet Drive is a substantial five-bedroom detached family home extending to over 3,300 sq. ft. and set on a generous plot in a highly desirable Bromley location. Offering versatile living space, two en-suite bedrooms, a large kitchen/breakfast room and a superb garden, the property is ideal for modern family life and entertaining.

Key Features

- Please Quote RF0924 for all Enquiries
- Impressive 3,300+ sq. ft. of accommodation
- Principal bedroom suite with dressing space and en-suite
- Large kitchen/breakfast room with direct garden access
- Superb rear garden with patio and lawn areas
- Arrange a viewing today
- Five well-proportioned bedrooms
- Expansive reception room with natural flow to conservatory
- Generous block-paved driveway and integral garage
- Sought-after Bromley address close to amenities, schools and transport

Barnet Drive, Bromley, BR2 8PQ



Approx. Gross Internal Floor Area 3378 sq. ft / 313.80 sq. m (Including Garage)

Illustration for identification purposes only, measurements are approximate, not to scale.

Produced by Elements Property