



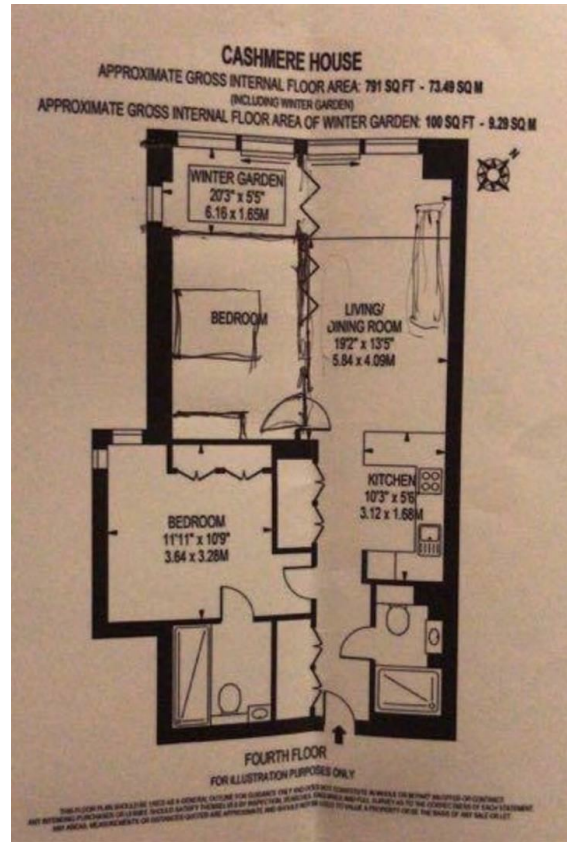
Cashmere House, 37 Leman Street

, London E1 8PT

- 5 Mins to Aldgate East
- Wellness centre with 18m swimming pool, spa & fully equipped gym
- Business lounge & meeting spaces
- EPC-B
- 24-hour concierge
- Private cinema screening room
- Beautifully landscaped communal gardens
- CTB-E

£3,900 Per Month

Local Authority **Tower Hamlets**
Council Tax Band **E**
EPC Rating **B**



London Office Office
Spaces Victoria, 25 Wilton Road, Pimlico,
London, SW1V 1LW

Contact
020 3084 3094
XL@londonvictoriagroups.co.uk
www.londonvictoriagroups.co.uk

Agents Note: Whilst every care has been taken to prepare these particulars, they are for guidance purposes only. All measurements are approximate and for general guidance purposes only and whilst every care has been taken to ensure accuracy, they should not be relied upon and potential buyers/tenants are advised to recheck the measurements.

