



Bowling Green Place, SE1

£650,000

This stunning third-floor apartment, bathed in natural light from its west-facing aspect, features a spacious open-plan living and kitchen area ideal for hosting guests. It comprises two large double bedrooms, two contemporary bathrooms, and ample storage throughout. Residents benefit from tranquil communal gardens, secure off-street parking, and the peace of mind that comes with a share of freehold. Offers In Excess Of £650,000

Bowling Green Place is perfectly situated in the heart of SE1. Step outside and you're immersed in one of London's most dynamic areas: wander through the bustling stalls of Borough Market, enjoy riverside strolls along the South

Features

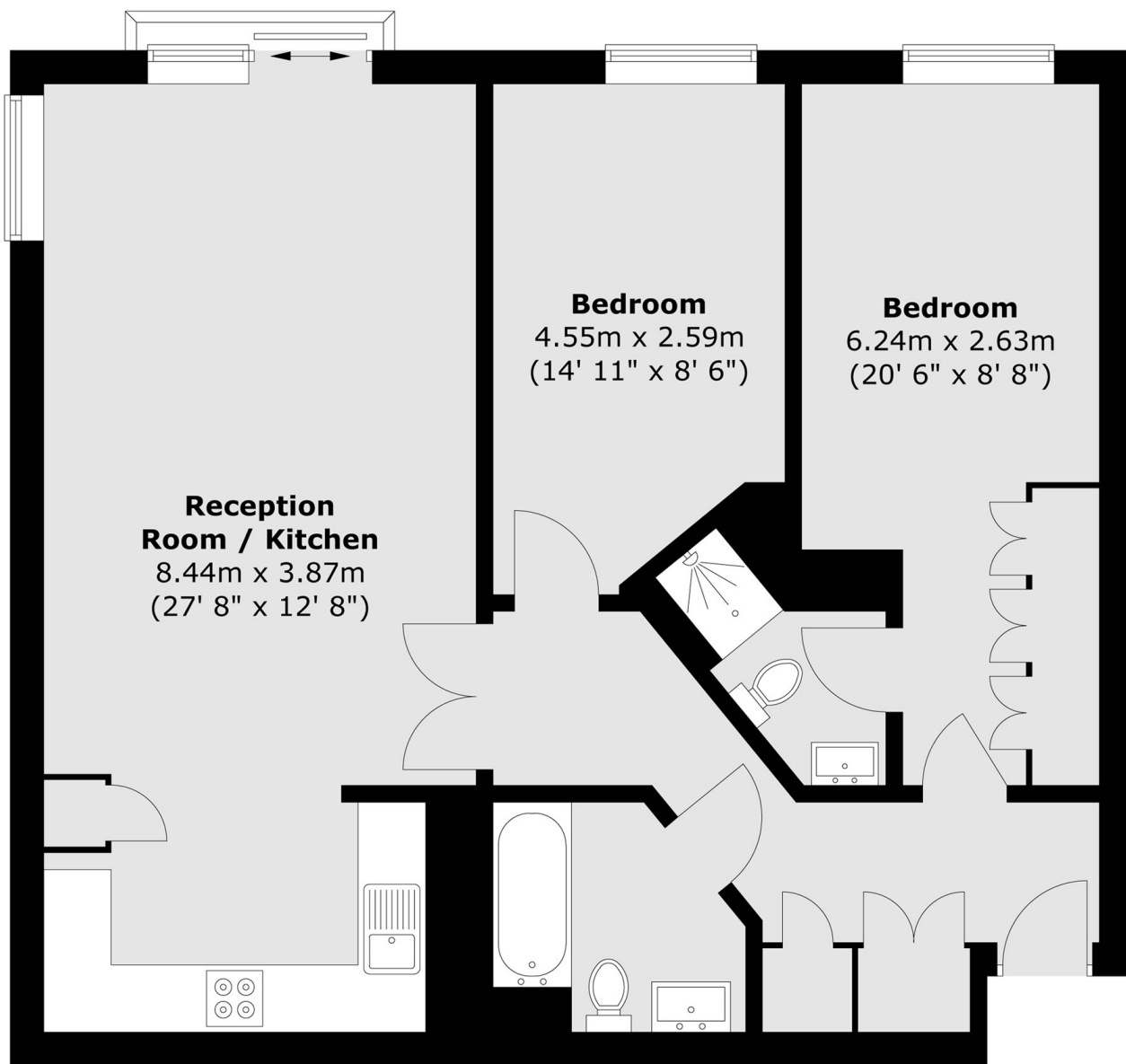
- OIEO £650,000
- Almost 850 Sq Ft
- Share of Freehold
- Lift Access & Secure Entry
- Communal Garden
- Secure Allocated Parking
- Hyperoptic Broadband
- Chain Free Sale



Bowling Green Place, SE1



Bowling Green Place, London, SE1



Total area (approx.) : 78.9 sq. m (849 sq. ft)