

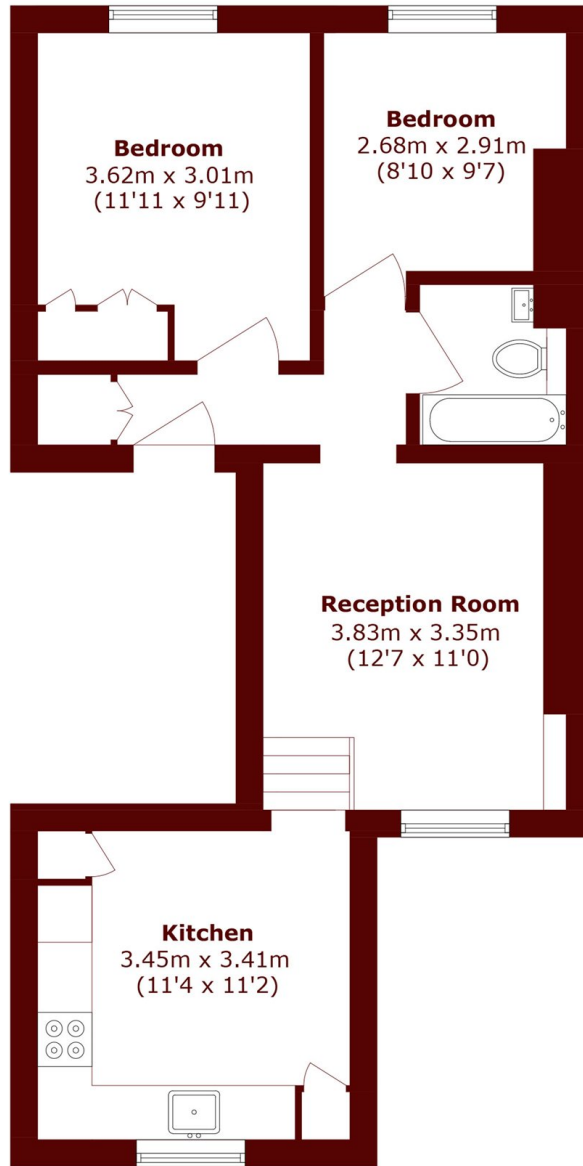


Goldney Road, W9

£550,000



- Two bedroom apartment
- Second floor
- Period conversion
- Separate kitchen
- Good condition
- Close to amenities



Second Floor

Total area (approx.): 52.0 sq. m (559.7 sq. ft)

Marsh & Parsons Little Venice

35 Maida Vale, Maida Vale,
W9 1TP
020 7993 3050