

THE VININGS

- WRAXALL • SOMERSET -

Barrel Cottage

Set at the foot of the much-admired Wraxall Vineyard, Barrel Cottage (Plot 2), sits within this bespoke collection of seven new homes perfectly positioned to enjoy far-reaching views across South Somerset.



Computer Generated Image shows adjoining Plots 1 +2
Postcode: BA4 6RQ - viewing strictly by appointment

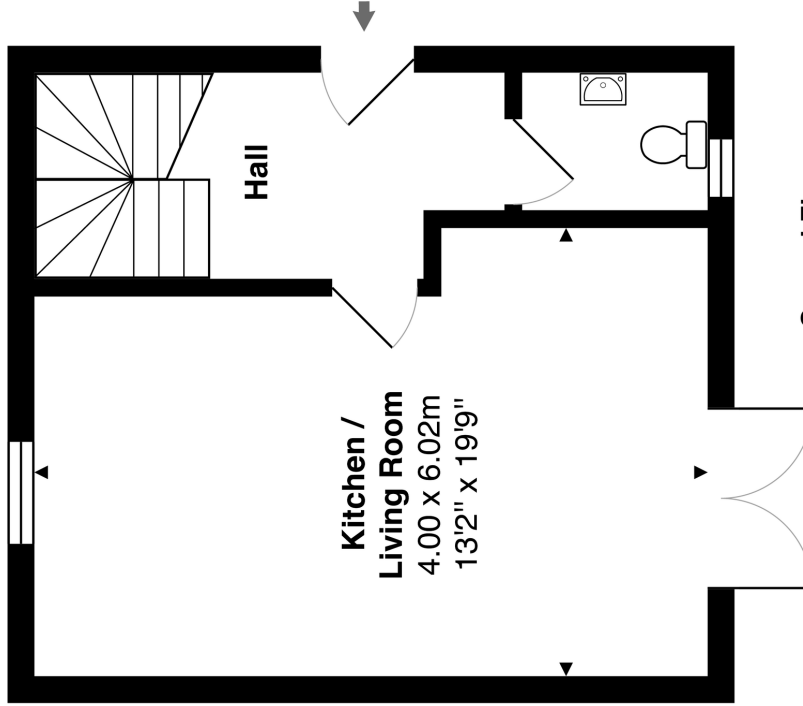


- 2-bedrooms (698 sq ft)
- Garden
- Howdens shaker kitchen
- White Silestone worktops
- Inset stainless steel Blanco sink
- AEG induction hob
- Extractor unit
- Electric oven
- Lamona integrated fridge freezer and dishwasher
- Porcelanosa floor and wall tiles
- Porcelanosa sanitary fittings
- Underfloor heating to ground floor
- Engineered oak flooring to downstairs living space
- Hereford Boucle 100% wool carpet fitted in bedrooms
- 'Copper' Sisal Herringbone with linen trim stair-runner
- Solar panels
- Batteries for power storage (upgrade)
- Parking

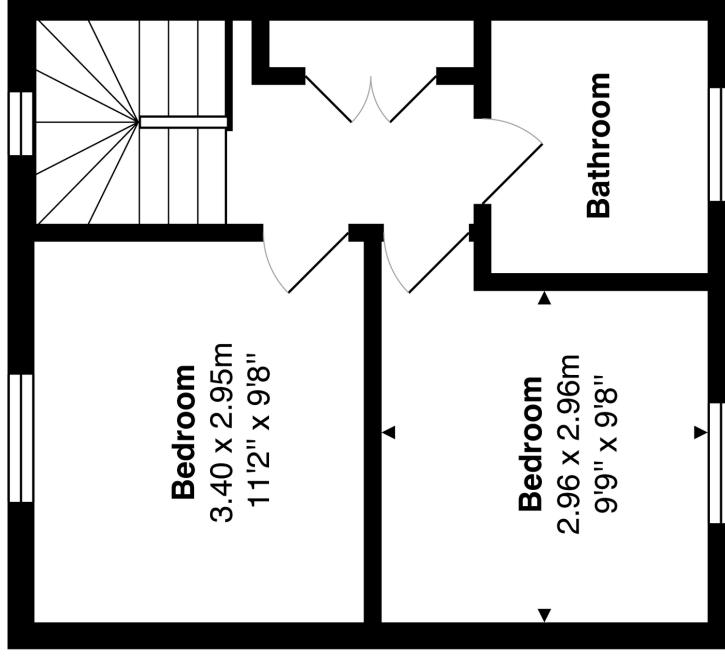
Plot 2, The Vinings, Wraxall



Approximate gross internal floor area of main building - 65 m² / 698 ft²



Ground Floor
Area: 32.5 m² ... 349 ft²



First Floor
Area: 32.5 m² ... 349 ft²

Please note that this floorplan is work in progress as this property is still being constructed. The opening of cabinetry doors illustrated may not be representative of the final finish.

Every care has been taken with the preparation of these details, in accordance with the Consumer Protection from Unfair Trading Regulations 2008, but complete accuracy cannot be guaranteed. Images used are computer generated.