



Moseley Avenue , Coventry, CV6 1HT Offers over £250,000

Evans Estates is delighted to present this charming three-bedroom semi-detached family home located on Moseley Avenue in Coventry, offered with no upward chain. This property is an excellent opportunity for families or first-time buyers seeking a comfortable and inviting residence.

Upon entering, you are welcomed by a spacious entrance hall that leads into a delightful lounge diner, perfect for both relaxation and entertaining. The kitchen is well-appointed and provides access to a lean-to, which can serve as a versatile space for additional storage or utility needs.

The first floor boasts three generously sized bedrooms, providing ample space for family living or guest accommodation. The family bathroom is conveniently located to serve all bedrooms, ensuring practicality for daily routines.

Externally, the property features well-maintained gardens to both the front and rear, offering a lovely outdoor space for children to play or for hosting summer gatherings. The presence of double glazing and gas central heating adds to the comfort and efficiency of the home.

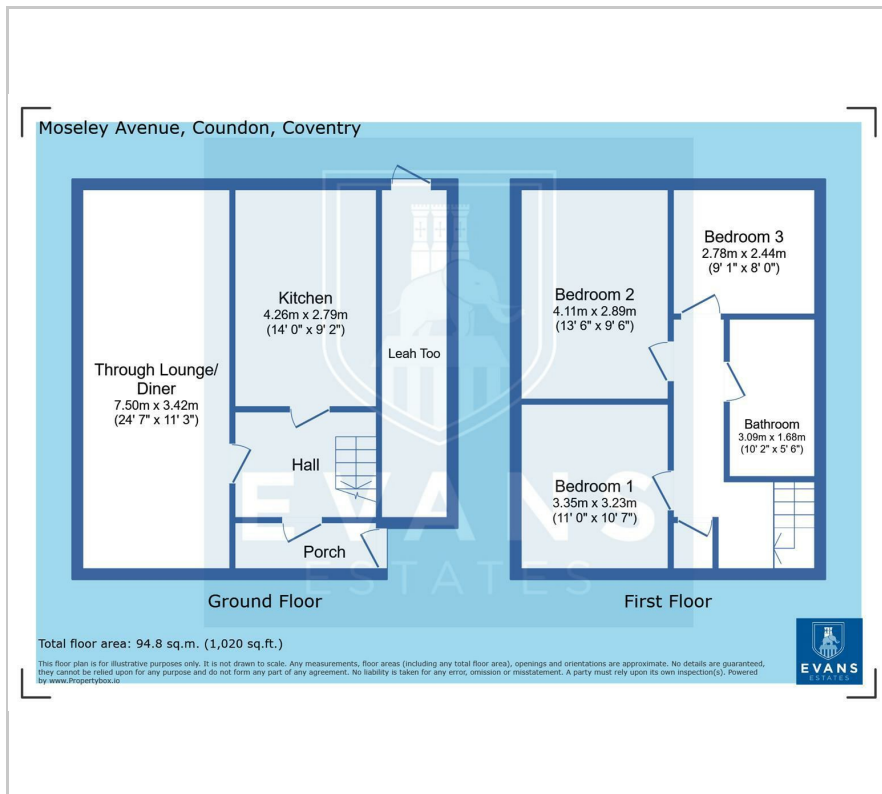
- Semi Detached Family Home
- No Upward Chain
- Three Bedrooms

Viewing

Please contact our Evans Estates Office on 02476333363 if you wish to arrange a viewing appointment for this property or require further information.



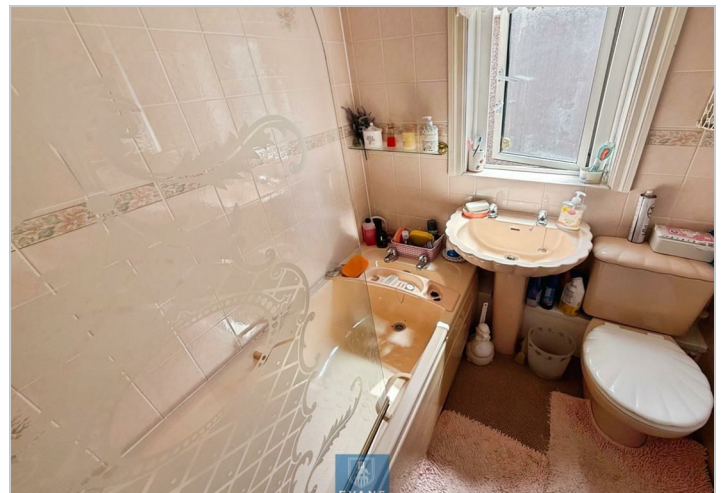
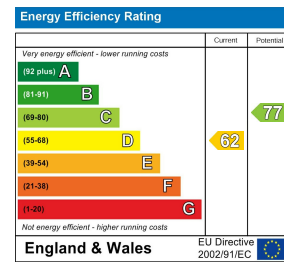
Floor Plan



Area Map



Energy Efficiency Graph



These particulars, whilst believed to be accurate are set out as a general outline only for guidance and do not constitute any part of an offer or contract. Intending purchasers should not rely on them as statements of representation of fact, but must satisfy themselves by inspection or otherwise as to their accuracy. No person in this firm's employment has the authority to make or give any representation or warranty in respect of the property.

47 Headington Avenue, Coventry, West Midlands, CV6 2GX
 Tel: 02476333363 Email: info@evans-estates.co.uk <https://www.evans-estates.co.uk>