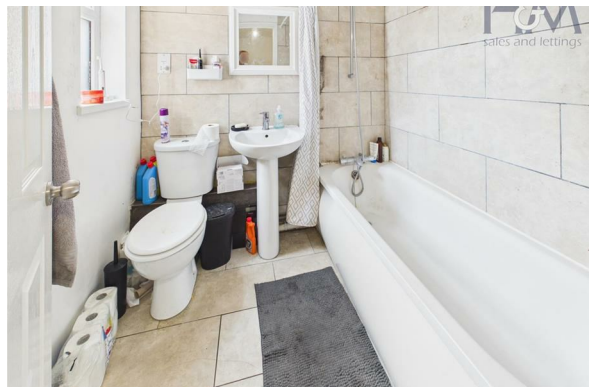
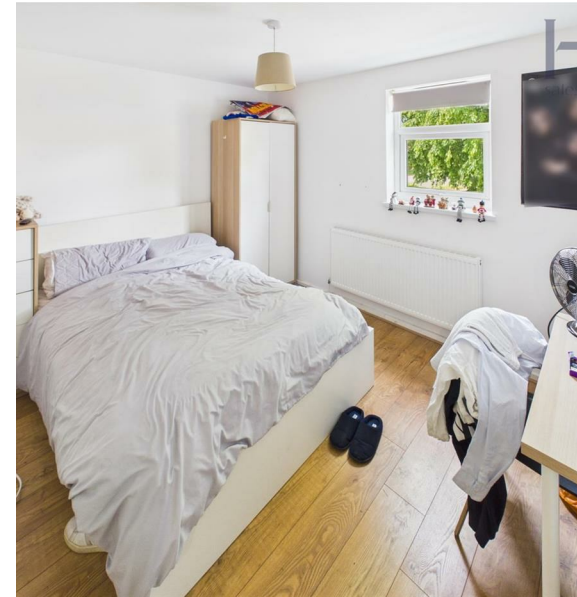


# Skipton Close, Stevenage, Hertfordshire, SG2 8TN

£3,500 PCM



\*\*\*GSK/MBDA\*\*\* interns. We are pleased to offer for rent this well presented six bedroom HMO which is set up for sharers. The accommodation comprises of entrance hall, downstairs toilet, separate shower room, modern fitted kitchen, communal areas and two bedrooms with access to the garden. To the first floor there are four further bedrooms, a bathroom and further shower room. Offered on a furnished basis this is a must view. Contact us to arrange a viewing. Available from 7th September 2026



86 High Street  
Stevenage  
Hertfordshire  
SG1 3DW  
01438 728444

stevenage@homesandmortgages.co.uk

### Energy Efficiency Rating

	Current	Potential
Very energy efficient - lower running costs		
(92 plus) <b>A</b>		
(81-91) <b>B</b>		
(69-80) <b>C</b>		<b>71</b>
(55-68) <b>D</b>	<b>54</b>	
(39-54) <b>E</b>		
(21-38) <b>F</b>		
(1-20) <b>G</b>		
Not energy efficient - higher running costs		
<b>England &amp; Wales</b>	EU Directive 2002/91/EC 