




**Victoria Bolt**  
estate agents POWERED BY **exp** UK

# Titan Avenue, Sherford

Guide Price £300,000

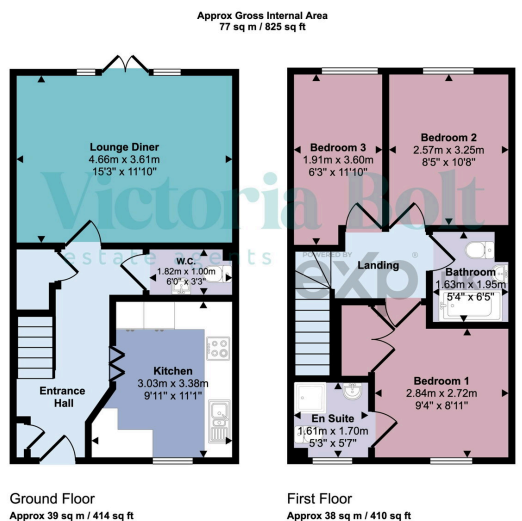
3  3  1 



- Three-bedroom semi-detached home
- Beautifully presented throughout
- Integrated kitchen appliances
- Level south-facing rear garden
- Downstairs WC and modern family bathroom
- Situated in the popular new town of Sherford
- Stylish high-gloss kitchen replaced in January 2026
- Spacious lounge with French doors to the garden
- Principal bedroom with fitted wardrobes and ensuite shower room
- Rear parking with EV charging point. On street parking also freely available.



Beautifully presented throughout, this three-bedroom semi-detached home is situated in the popular new town of Sherford and is ready for its next owners to move straight in. The property has been enhanced by the current owners, including a stylish high-gloss kitchen installed in January. The spacious lounge opens onto a level, south-facing garden, while upstairs offers three well-proportioned bedrooms, including a principal bedroom with fitted wardrobes and an ensuite shower room. Further benefits include a downstairs WC, rear parking with an EV charging point, and a modern family bathroom. A fantastic modern home in a sought-after location.



This floorplan is only for illustrative purposes and is not to scale. Measurements of rooms, doors, windows, and any items are approximate and no responsibility is taken for any error, omission or mis-statement. Icons of items such as bathroom suites are representations only and may not look like the real items. Made with Made Snappy 360.

