



Suffield Road, SE20 | Guide Price £500,000

020 8702 9333

[crystalpalace@pedderproperty.com](mailto:crystalpalace@pedderproperty.com)

**pedder**  
We live local



# In General

- Three bedroom end of terrace house
- Quiet cul de sac
- Close to multiple transport links
- No onward chain
- Blank canvas
- Off street parking

# In Detail

\*Guide price £500,000 - £525,000\*

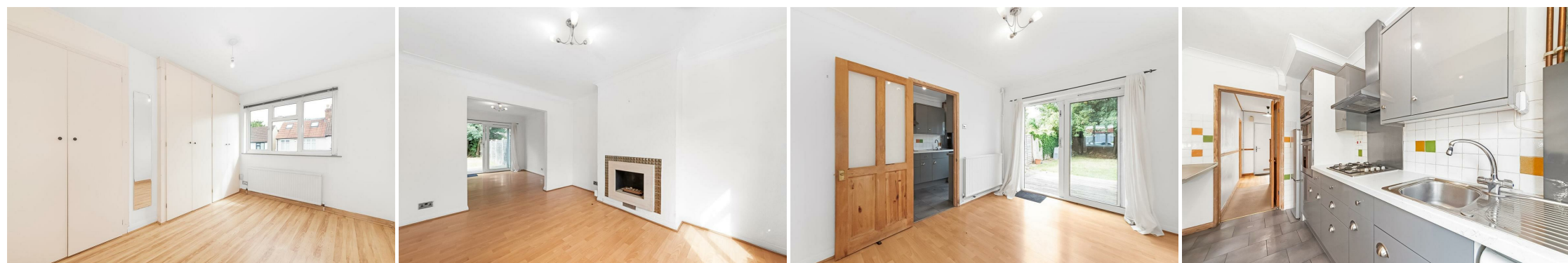
A three bedroom end of terrace house positioned on a quiet cul de sac nearby transport links and amenities.

This property is arranged over two floors and provides a blank canvas for a new owner to personalise or remodel (STP) as desired. The entrance level comprises a spacious through lounge and a separate kitchen, whilst upstairs there are three bedrooms and a bathroom. Externally there is a sunny rear garden with a south-westerly aspect, side access, and a decked seating area.

Suffield Road is quiet residential street moments from Stewart Fleming Primary school (Ofsted outstanding) and is convenient for both tram and rail links to central London from Birkbeck, Elmers End, and Norwood Junction.

No onward chain.

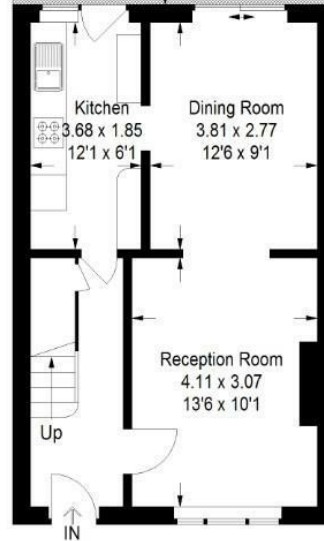
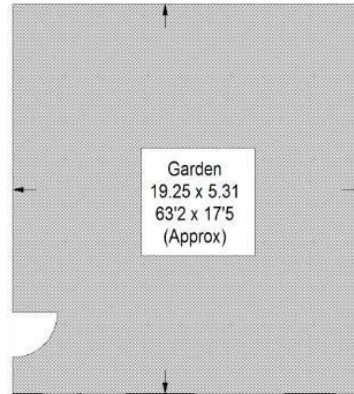
EPC: E | Council Tax Band: D



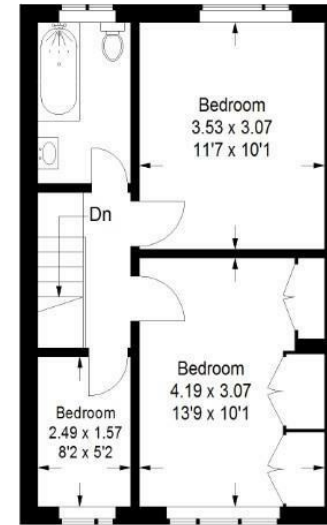
# Floorplan

**Suffield Road, SE20**

Approximate Gross Internal Area  
78.4 sq m / 844 sq ft



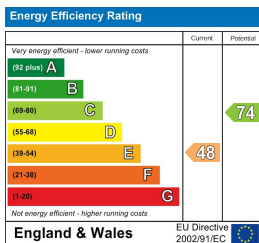
**Ground Floor**



**First Floor**

Copyright www.pedderproperty.com © 2025

These plans are for representation purposes only as defined by RICS - Code of Measuring Practice. Not drawn to Scale. Windows and door openings are approximate. Please check all dimensions, shapes and compass bearings before making any decisions reliant upon them.



Pedder Property Ltd trading as Pedder for themselves and for the vendor/landlord of this property whose agents they are, give notice that (1) these particulars do not constitute any part of an offer or contract, (2) all statements contained within these particulars are made without responsibility on the part of Pedder or the vendor/landlord, (3) whilst made in good faith, none of the statements contained within these particulars are to be relied upon as a statement of representation or fact, (4) any intending purchaser/tenant must satisfy him/herself by inspection or otherwise as to the correctness of each of the statements contained within these particulars, (5) the vendor/landlord does not make or give either Pedder or any person in their employment any authority to make or give representation or warranty whatsoever in relation to this property.