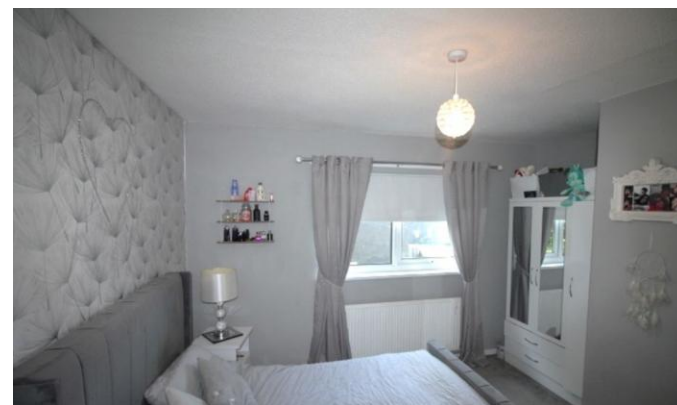




307 Booth Walk
Newton Aycliffe
County Durham
DL5 7NT

£575 pcm

Mid Terraced House
Two Bedrooms
Well Presented Throughout
Available Early October 2024!
Ideal for a Variety of Tenants!





Safe and Secure welcome to the rental market this two bedroom mid-terraced house, available late September 2024 on an unfurnished basis. Situated on Booth Walk, Newton Aycliffe, the property is conveniently situated within direct reach of all local amenities including within in reach of the A1(M).

Briefly comprising of: an entrance hall, kitchen, lounge, two spacious bedrooms, family bathroom separate WC and garden to rear.

If you are interested please give our office a call on 0191 385 4477.

ENTRANCE HALL

Double glazed entrance door and staircase to first floor.

LOUNGE

10' 5" x 15' 8" (3.2m x 4.8m) Double glazed window to rear, double glazed French doors to rear, radiator, telephone and television point.

KITCHEN

9' 10" x 16' 4" (3.0m x 5.0m) Fitted wall and base units, work surfaces, single bowl sink and drainer unit, integrated electric oven and hob with extractor hood over, space for washing machine, radiator, double glazed window to front and double glazed door to rear.

FIRST FLOOR LANDING



Access to loft space.

MASTER BEDROOM

9' 10" x 12' 1" (3.0m x 3.7m) Double glazed window to rear and radiator.

BEDROOM 2

15' 1" x 8' 2" (4.6m x 2.5m) Double glazed window to front and radiator.

BATHROOM

White two piece suite comprising of panelled bath with shower over, pedestal wash hand basin and double glazed window to rear.

SEPERATE WC

Low level WC.

REAR GARDEN

Mainly paved area and garden shed enclosed by fenced boundaries with gated access.

Local Authority
Council Tax Band
EPC Rating

TBC

Houghton le Spring
24-25 Westbourne Terrace
Houghton Le Spring
Tyne And Wear
DH4 4QT

Contact
0191 3854477
info@safeandsecureproperties.co.uk
o.uk
safeandsecureproperties.co.uk

Agents Note: Whilst every care has been taken to prepare these particulars, they are for guidance purposes only. All measurements are approximate and are for general guidance purposes only and whilst every care has been taken to ensure their accuracy, they should not be relied upon and potential buyers/tenants are advised to recheck the measurements.