



## Endwell Road, SE4

### £600,000

A beautifully presented two double bedroom home, featuring a stunning rear extension that fills the open-plan kitchen and reception area with natural light. Ideally located just moments from Brockley Station on the highly sought-after Endwell Road, the property also benefits from a well-maintained private rear garden.

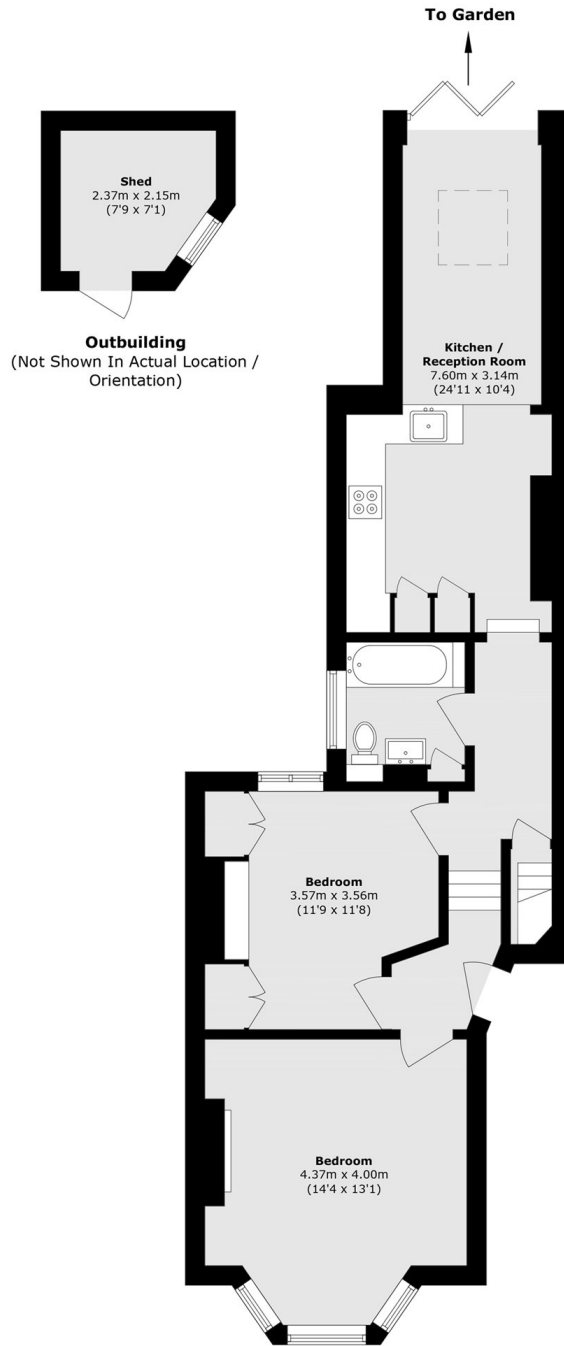
Additional highlights include natural floors, abundant natural light throughout, landscaped garden and a high-quality finish.

Conveniently located for Brockley Station, the property offers excellent transport links to London Bridge, Canada Water, Clapham, Victoria, Whitechapel, Highbury & Islington, and beyond. A wide range of local amenities are also within easy walking distance, including independent cafés, popular restaurants, green spaces, and vibrant gastro pubs.

### Features

- Two Double Bedrooms
- Landscaped Garden
- Share Of Freehold
- Open Plan Reception
- Close To Transport Links

# Endwell Road, London, SE4



Total area (approx.): 66.9 sq. m (720.1 sq. ft)