

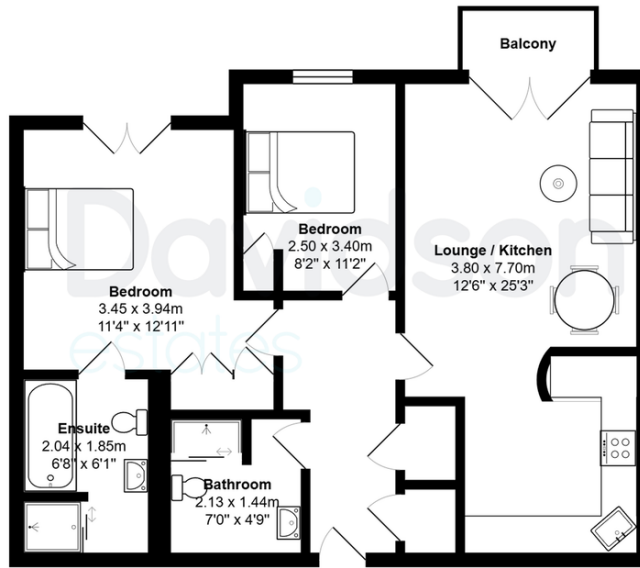


ST JAMES PLACE, 34 GEORGE ROAD
BIRMINGHAM, B15

£250,000
LEASEHOLD

ST JAMES PLACE | Spacious 2 Bedroom Apartment with Balcony | Secure & Allocated parking | Communal Garden | Residents Gym | B15 Postcode | Incredible Location |

Davidson



Total Area: 74.9 m² ... 806 ft² (excluding balcony)
All measurements are approximate and for display purposes only

Score	Energy rating	Current	Potential
92+	A		
81-91	B		85 B
69-80	C	80 C	
55-68	D		
39-54	E		
21-38	F		
1-20	G		

Davidson

OFFICE
22 Harborne Road
Birmingham
West Midlands
B15 3AA

0121 455 7727
info@davidsonstates.co.uk
www.davidsonstates.co.uk

Agents Note: Whilst every care has been taken to prepare these particulars, they are for guidance purposes only. All measurements are approximate and are for general guidance purposes only and whilst every care has been taken to ensure their accuracy, they should not be relied upon and potential buyers/tenants are advised to recheck the measurements