



ADDISON GARDENS, W14

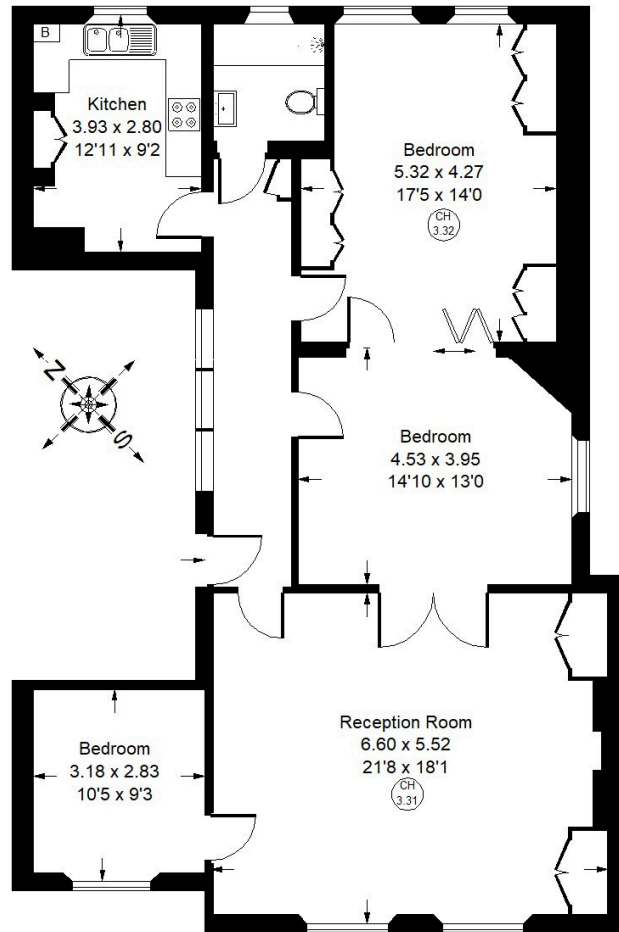


Addison Road, W14

Situated on the first floor of an attractive Victorian building, this generous two/three bedroom flat offers an exceptional opportunity to create a beautiful home in a highly sought-after location. The property provides circa 1208 square foot of accommodation, comprising two well-proportioned bedrooms and an additional reception room that could easily be used as a third bedroom or formal dining room. Characteristic of its Victorian origins, the flat benefits from 3.31m ceiling height, feature fire place and well-proportioned rooms, providing an excellent foundation for refurbishment. Addison Road is a quiet street located close to the local amenities of Holland Park and Notting Hill, as well as Westfield Shopping Centre and High Street Kensington. Addison Road is also close to good schools within the Holland Park area and the green open spaces of Holland Park are only a short walk away, along with good transport links at Holland Park Avenue.



Approx. Gross Internal Area
= 112.2 sq m / 1,208 sq ft



First Floor



Addison Road, W14 - Share of Freehold Local Authority - Royal Borough of Kensington & Chelsea

- Three Bedrooms
- Refurbishment Potential
- Excellent Transport Connections
- EPC Rating = C
- Council Tax Band = G



Whilst every attempt has been made to ensure the accuracy of the floor plan, measurements are approximate and not to scale. No guarantee is given on the total square footage of the property quoted on the plan. Figures given are for guidance. Plan is for illustration purposes only, not to be used for valuations.