



Price
£525,000

Freehold

3x  2x  1x 

**Stayton Road, Sutton,
Surrey, SM1**

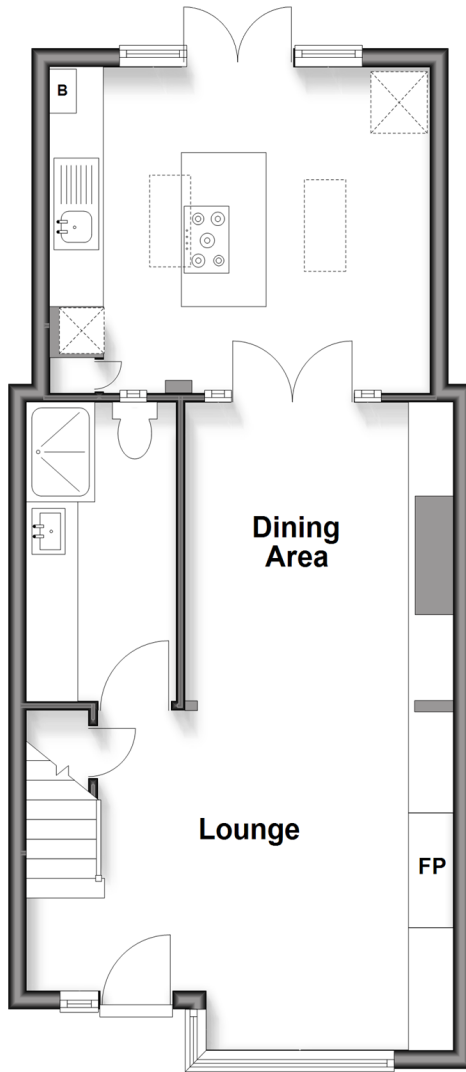
OVER 60?

Secure this property
for up to **59% less!**

cubitt & west
Helping you move forwards

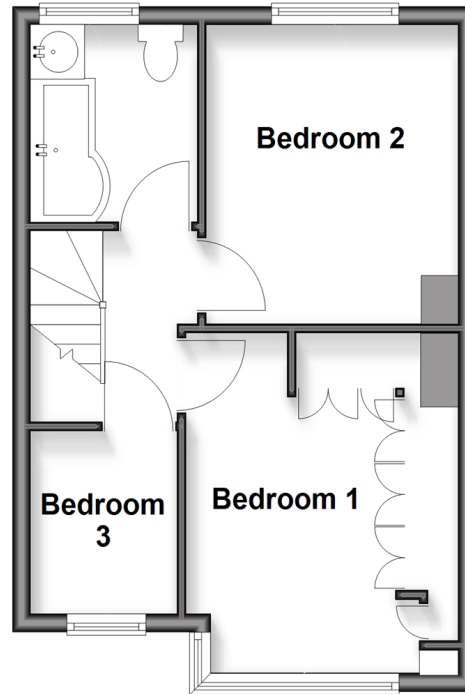
Ground Floor

Approx. 47.9 sq. metres (516.1 sq. feet)



First Floor

Approx. 32.4 sq. metres (348.7 sq. feet)



Accommodation

GROUND FLOOR

Lounge/Dining Area: 23'4 maximum x 15'5 maximum (7.12m x 4.70m)

Kitchen : 14'3 x 11'9 (4.35m x 3.58m)

Shower Room

FIRST FLOOR

Landing

Bedroom 1 : 12'6 x 9'11 (3.81m x 3.02m)

Bedroom 2 : 11'9 x 9'4 (3.58m x 2.85m)

Bedroom 3 : 6'8 x 5'5 (2.03m x 1.65m)

Bathroom

OUTSIDE

Off Road Parking

Rear Garden



Main features

- Beautifully extended to create a wonderful open plan space, perfect for family life
- Contemporary kitchen & bathrooms
- Less than a mile to Sutton Common & West Sutton stations
- Downstairs shower room/utility
- Driveway for two cars
- Good size garden with decking



Nearest Schools

Primary Schools: Westbourne Primary 0.4 miles, All Saints Benhilton CofE Primary 0.5 miles, Manor Park Primary 0.8 miles
Secondary Schools: Glenthorne High 0.8 miles, Greenshaw High 1.0 miles, Sutton Grammar for Boys 1.0 miles



Transport Information

Train Stations: Sutton Common 0.6 miles, West Sutton 0.8 miles, Cheam 1.3 miles



Address

Stayton Road, Sutton, Surrey, SM1



Directions

For directions to this property please contact us.



cubitt&west
Helping you move forwards

Call Sutton Branch 020 8661 0330 ■ cubittandwest.co.uk



■ Through a Homewise Home For Life Plan people aged 60+ can secure this property for up to 59% less, by purchasing a Lifetime Lease



22018351/20260330/CR/KWK