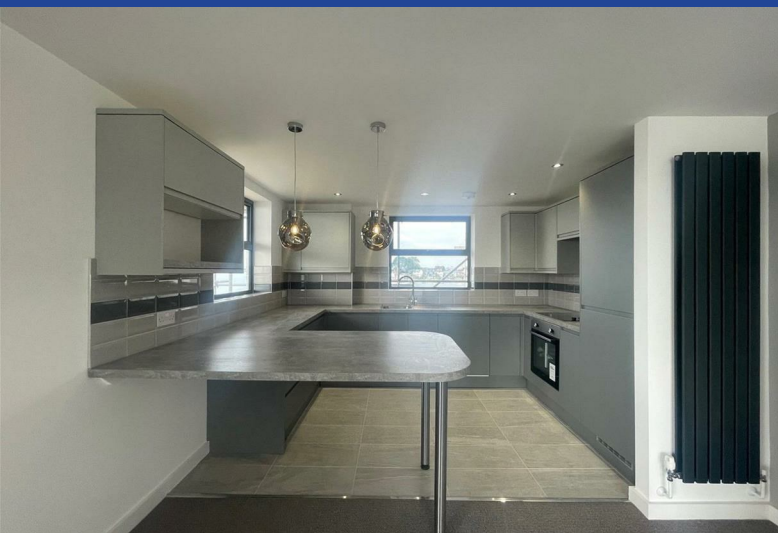




Flat 56 36 Salterns Way

Lilliput, Poole, BH14 8LW

£1,600 PCM



Road Map



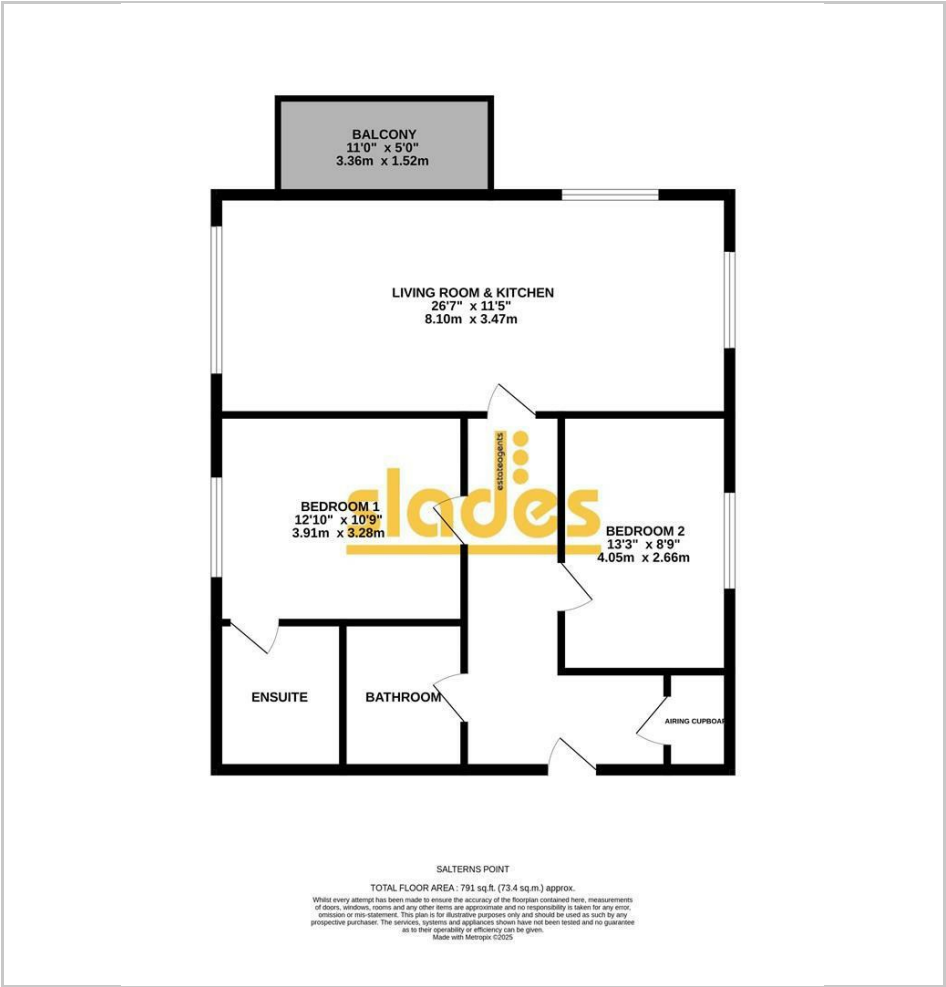
Hybrid Map



Terrain Map



Floor Plan



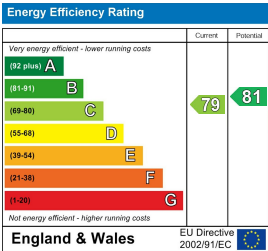
- Superb Marina Locations
- Newly Decorated
- Spacious Lounge
- Modern Kitchen
- Two Bedrooms
- En-Suite to Master
- Private Balcony
- Allocated Parking
- Available Now

Viewing

Please contact our Slades Estate Agents Office on 01202548855 if you wish to arrange a viewing appointment for this property or require further information.



Energy Efficiency Graph



These particulars, whilst believed to be accurate are set out as a general outline only for guidance and do not constitute any part of an offer or contract. Intending purchasers should not rely on them as statements of representation of fact, but must satisfy themselves by inspection or otherwise as to their accuracy. No person in this firms employment has the authority to make or give any representation or warranty in respect of the property.

**** AVAILABLE NOW ** An UNFURNISHED newly decorated 2 bedroom, 2 bathroom apartment with private BALCONY, and allocated parking with superb marina views.**



