



Ash Street

Salford



Offers Over £190,000

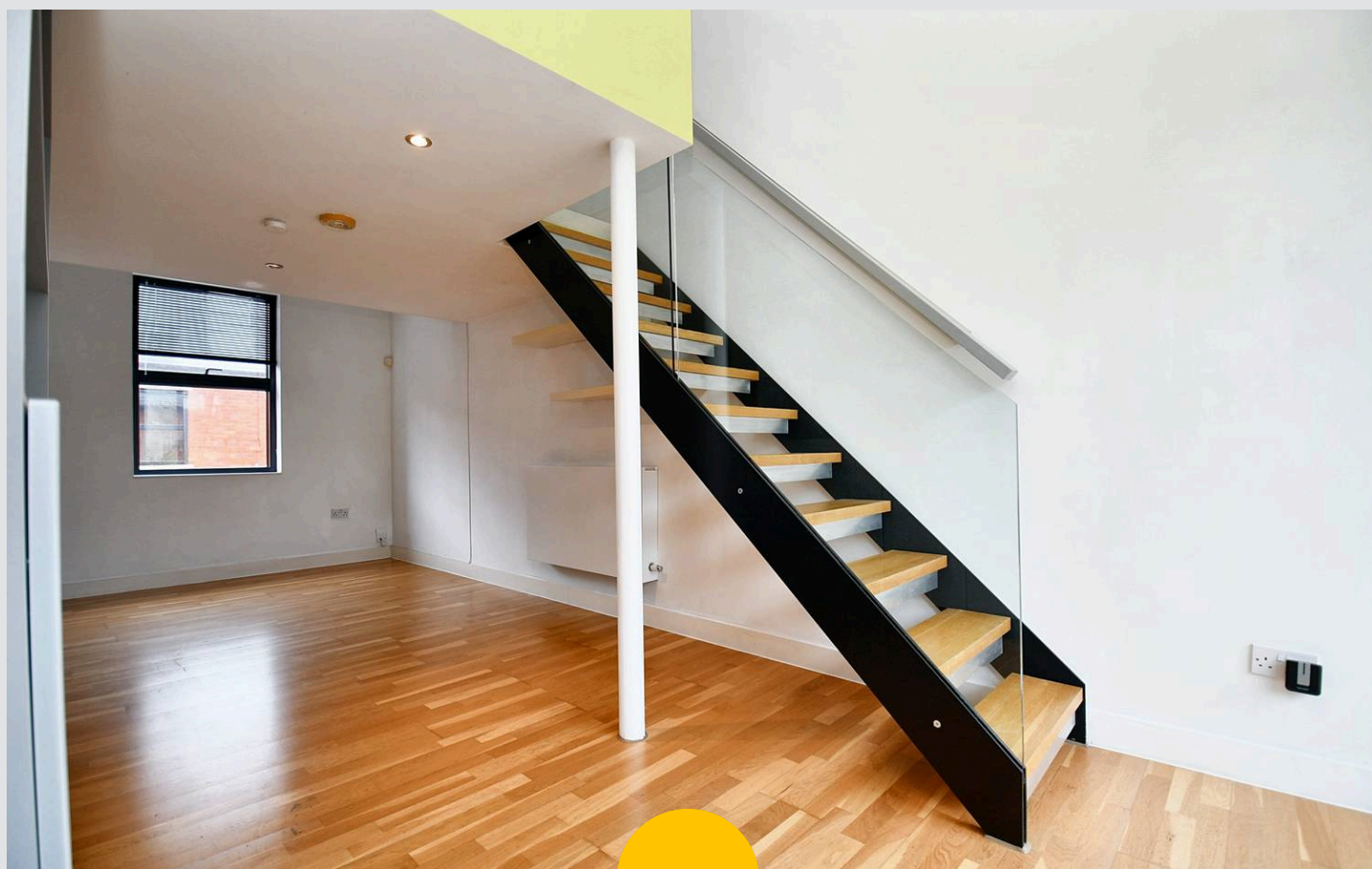
# Ash Street

Salford

Modern Two Bedroom Property Situated Within Walking Distance of Salford Quays & Media City - Boasting a Large Kitchen Diner with Sliding Doors Leading to a Garden Terrace at the Rear!  
Council Tax band: TBD

Tenure: Leasehold

- Modern Two Bedroom Property Within Walking Distance of Salford Quays & Media City
- Situated on a Popular Residential Development, Close to Amenities
- Within Walking Distance of Langworthy Tram Stop, with Direct Access into Manchester City Centre
- Two Double Bedrooms on the Ground Floor
- Modern Three-Piece Bathroom, Complete with a 'Sunken' Bath
- Large Kitchen Diner with Sliding Doors Leading to the Garden Terrace at the Rear
- Lounge to the Top Floor
- Benefits from an Undercroft Parking Space
- Great First Time Home or Investment
- Viewing is Highly Recommended!



HILLS



**Entrance Hallway**

**Lounge**

12' 0" x 11' 9" (3.65m x 3.58m)

**Kitchen / Diner**

23' 4" x 11' 9" (7.11m x 3.58m)

**Bedroom One**

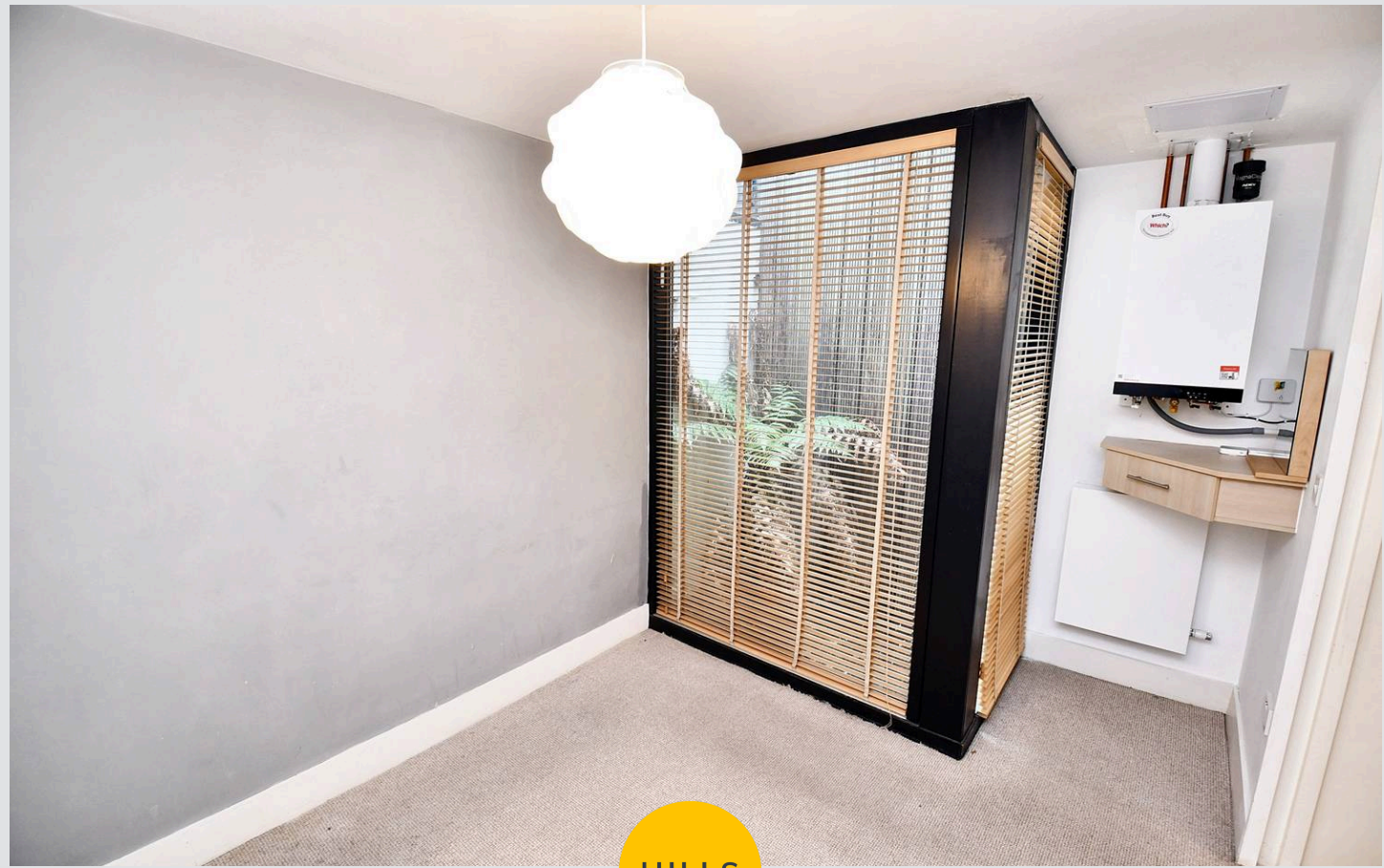
11' 9" x 8' 1" (3.58m x 2.46m)

**Bedroom Two**

10' 0" x 8' 4" (3.05m x 2.54m)

**Bathroom**

6' 4" x 5' 1" (1.93m x 1.55m)







## Hills | Salfords Estate Agent

Hills Residential, Sentinel House Albert Street – M30 0SS

0161 707 4900

[sales@hills.agency](mailto:sales@hills.agency)

[www.hills.agency/](http://www.hills.agency/)



By law, we are required to conduct anti-money laundering checks on all potential buyers and sellers. In line with HMRC guidelines, our trusted partner, Coadjute, will securely manage these checks on our behalf. A non-refundable fee of £45 + VAT per person will apply, and Coadjute will handle the payment. Once an offer is accepted, Coadjute will send a secure link for you to complete the biometric checks. These checks must be completed before we can send the memorandum of sale to all parties. PLEASE NOTE: The Agent has not tested any equipment, fixtures, fittings or services so cannot verify that they are in working order or fit for the purpose. References to the properties tenure are based on information supplied by the seller. You are advised to check the availability of this property before travelling any distance to view. Every effort has been made to ensure these particulars are correct and not misleading but their accuracy is not guaranteed nor do they form part of any contract.