



Salamanca Place, SE1

£399,950

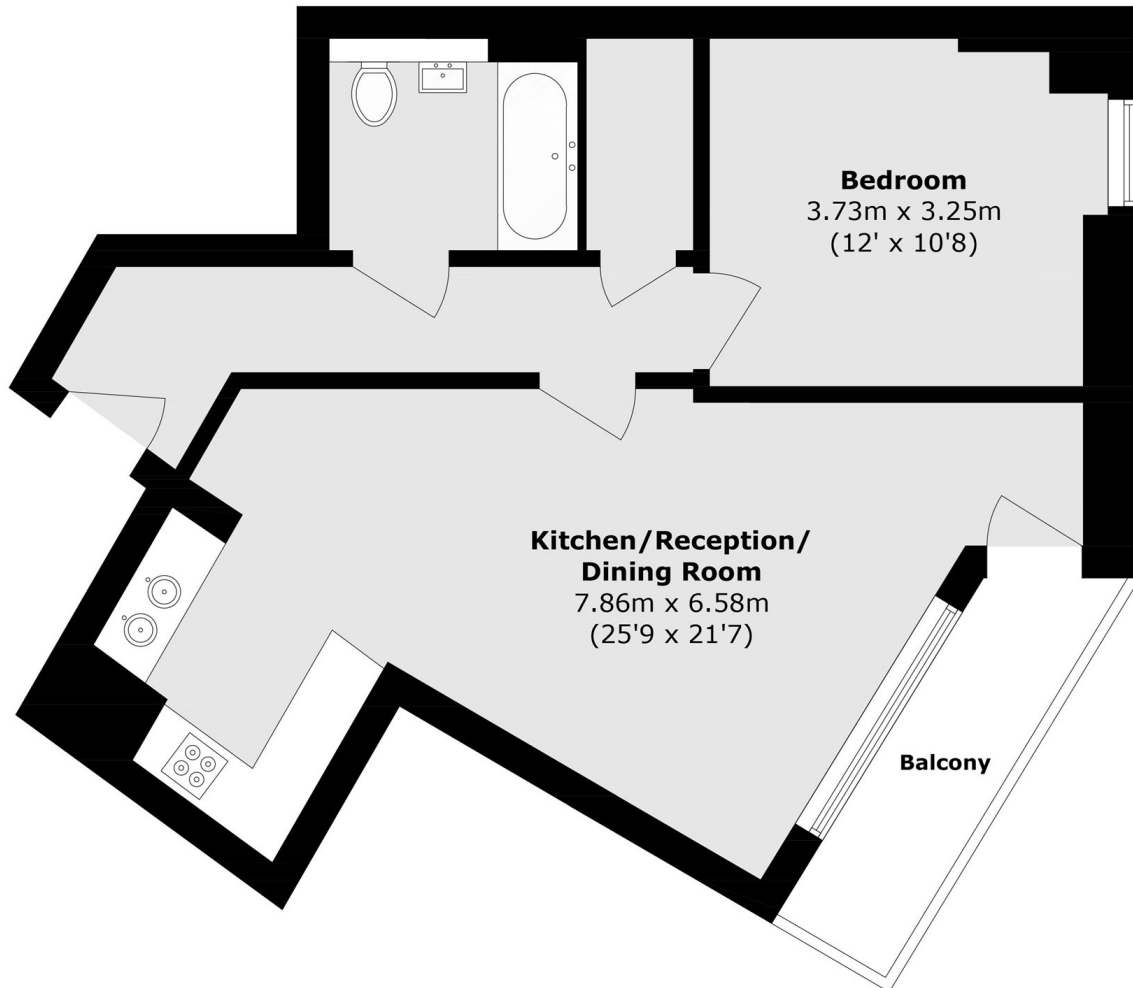
An incredible fourteenth floor, one bedroom flat with far reaching east facing views which include views of the city and the beautiful morning sunrise. The property is being sold with no onward chain and benefits from a sociable open plan kitchen and reception room, with access onto a large balcony. There is good storage throughout the property, lift access and access to a communal 17th floor roof terrace benefitting from incredible views of the City.

Peacefully located just moments from the River Thames and with convenient access to a vibrant selection of bars, restaurants, and cultural attractions in nearby Waterloo and along the South Bank. The West End is also just a short journey across the river. Excellent transport links include Vauxhall Station, offering both Victoria Line and National Rail services, as well as numerous frequent bus routes.

Features

- 14th Floor
- One Bedroom
- No Onward Chain
- Excellent Condition
- Communal Roof Terrace

Salamanca Place, London, SE1



Total area (approx.): 55.9 sq. m (601.7 sq. ft)

Balcony area (approx.): 4.8 sq. m (51.6 sq. ft)