

759 Knutsford Road
Latchford
Warrington
Cheshire WA4 1JY

Tel 01925 417091
Email info@howellandco.co.uk

www.howellandco.co.uk



Office 4 Greenway, Warrington, WA1 3EF

£1,520 Per Month

COMMERCIAL OFFICE TO LET, £1,520 PCM, AIR CONDITIONING/HEAT PUMP CLIMATE CONTROL, CCTV, SECURITY ALARM AND DOOR FOB ENTRY SYSTEM, ON SITE CAR PARKING.

The property comprises a detached modern two storey office building with on-site parking. The property was substantially modernised and refitted in 2019 and is now configured to offer 7 serviced office spaces ranging from 147 to 607 square feet. There is a meeting room that can be booked in addition if required.

Office number 4 is currently available to rent, which is available for £1,520.

This modern detached office building is located just off the A57 trunk road that links Warrington Town Centre with junction 21 of the M6. The Town Centre is approximately 2 miles to the West and the Motorway is approximately 2 miles to the East. Warrington is strategically located between Manchester and Liverpool. In the 2011 census the population was 202,200.

Rent payments include the cost of landlord's services to include water, electricity, heating, building insurance, general maintenance, cleaning of all communal areas, alarms/security, broadband and Wifi and administration and management costs. Costs excluded include telephone systems, cleaning of individual office suites and business rates.

EXTERNAL



Externally this property has a limited number off road parking spaces.

OFFICE ROOM



With large windows fitted with blinds, automatic lights, and a small kitchenette.

MEETING ROOM



Available to be booked, with large table to seat multiple clients.

HALLWAY



Communal areas are maintained, costs included with the rent.

W/C's



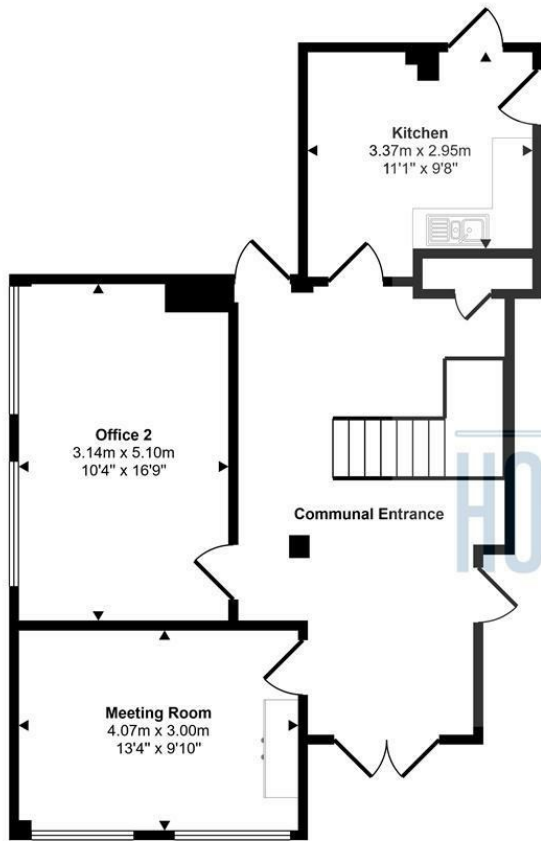
The property has multiple cloakrooms throughout, with two on the ground floor, one of which is disability friendly, and one on the first floor.

KITCHENS

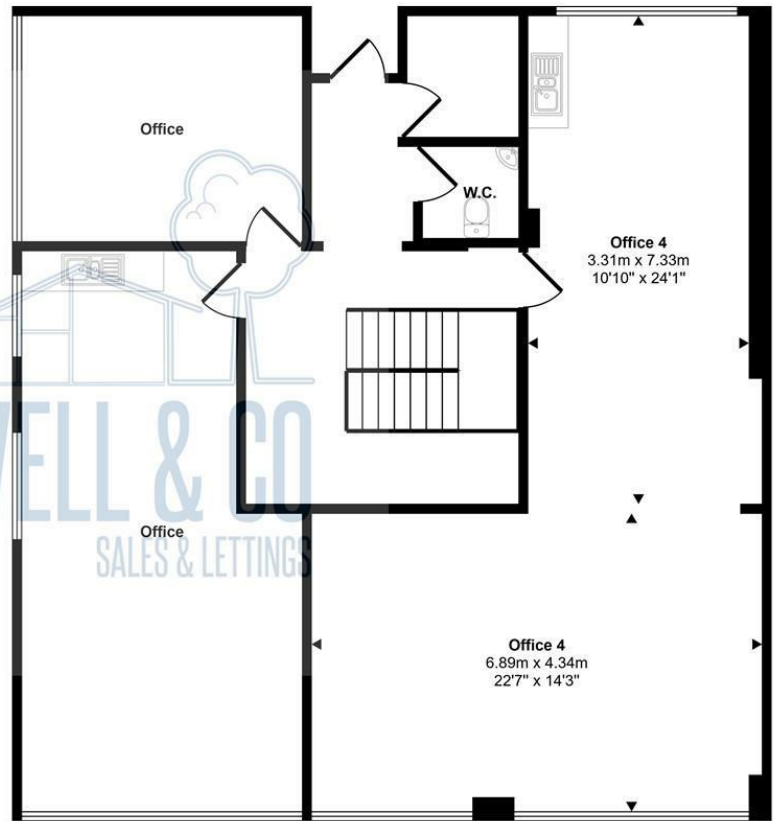


The property has two communal kitchens with food making facilities such as microwave and stainless steel sink with mixer tap.

Approx Gross Internal Area
196 sq m / 2113 sq ft

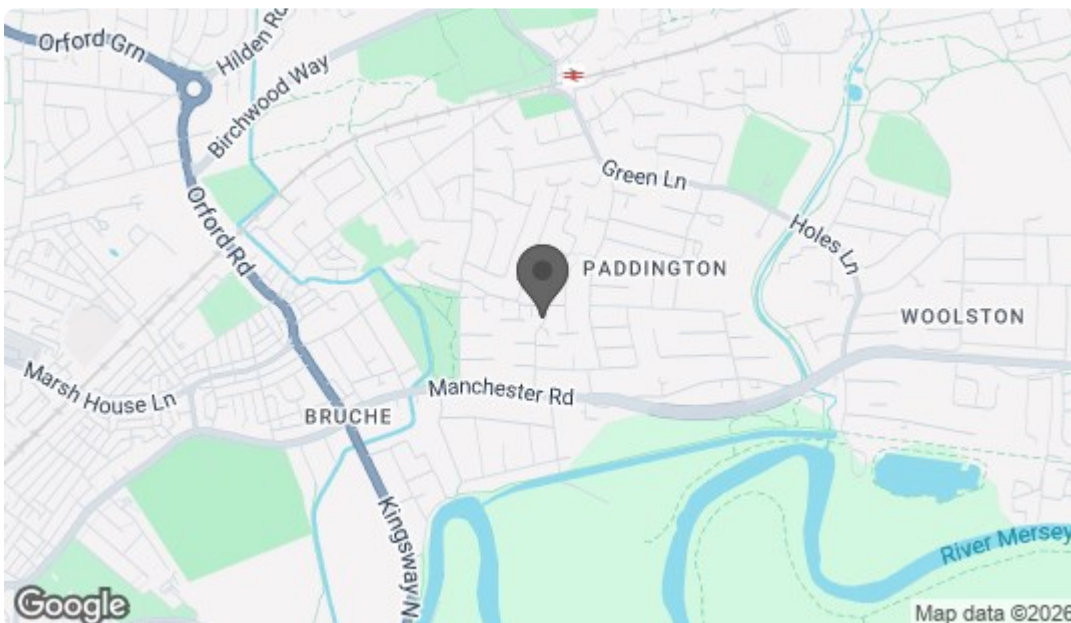


Ground Floor
Approx 65 sq m / 699 sq ft



First Floor
Approx 131 sq m / 1414 sq ft

This floorplan is only for illustrative purposes and is not to scale. Measurements of rooms, doors, windows, and any items are approximate and no responsibility is taken for any error, omission or mis-statement. Icons of items such as bathroom suites are representations only and may not look like the real items. Made with Made Snappy 360.



Energy Efficiency Rating		Current	Potential
Very energy efficient - lower running costs			
(92 plus)	A		
(81-91)	B		
(69-80)	C		
(55-68)	D		
(39-54)	E		
(21-38)	F		
(1-20)	G		
Not energy efficient - higher running costs			
England & Wales		EU Directive 2002/91/EC	
Environmental Impact (CO ₂) Rating		Current	Potential
Very environmentally friendly - lower CO ₂ emissions			
(92 plus)	A		
(81-91)	B		
(69-80)	C		
(55-68)	D		
(39-54)	E		
(21-38)	F		
(1-20)	G		
Not environmentally friendly - higher CO ₂ emissions			
England & Wales		EU Directive 2002/91/EC	