



**Thorncliffe Street, Huddersfield, HD3**  
Huddersfield

Offers in the Region of  
**£119,950**



**Bedrooms: 2 | Bathrooms: 1 | Receptions: 1**

Set in the heart of Lindley village is this newly renovated and charming front-facing terrace offering the perfect blend of character and convenience. Just a two-minute stroll from a range of local shops, cafés, and everyday amenities, the location is ideal for those seeking a vibrant yet community-focused setting.

Inside, the property features two well-proportioned bedrooms – one double and one single – alongside a neatly presented bathroom. The heart of the home is a bright, open-plan kitchen and living space, designed for modern living. The living area is enhanced by a beautiful original stone floor and a decorative inglenook fireplace adding a touch of timeless character and warmth.

Well-presented throughout and ready to move straight into, this delightful home is perfectly suited for first-time buyers, downsizers, or investors alike.

### Entrance Vestibule

Enter the property via a solid wood door into the vestibule with coir matting. Access to the open plan living/kitchen area. Stairs rise to the first floor accommodation.

### Open Plan Living/Kitchen

This open plan living kitchen room features the original stone flagged flooring and decorative inglenook fireplace. The kitchen has matching cream wall and base units, laminate work surfaces and tiled splashbacks. Integrated appliances comprise of: an electric oven, a two ring electric hob, an extractor, an inset stainless steel sink, a fridge and one free standing space for an appliance. There is a PVCu part privacy window to the front. Access to the cellar.



**Bedrooms: 2 | Bathrooms: 1 | Receptions: 1**

**Open Plan Living/Kitchen**

This open plan living kitchen room features the original stone flagged flooring and decorative inglenook fireplace. The kitchen has matching cream wall and base units, laminate work surfaces and tiled splashbacks. Integrated appliances comprise of: an electric oven, a two ring electric hob, an extractor, an inset stainless steel sink, a fridge and one free standing space for an appliance. There is a PVCu part privacy window to the front. Access to the cellar.



**Bedrooms: 2 | Bathrooms: 1 | Receptions: 1**

**Open Plan Living/Kitchen**

This open plan living kitchen room features the original stone flagged flooring and decorative inglenook fireplace. The kitchen has matching cream wall and base units, laminate work surfaces and tiled splashbacks. Integrated appliances comprise of: an electric oven, a two ring electric hob, an extractor, an inset stainless steel sink, a fridge and one free standing space for an appliance. There is a PVCu part privacy window to the front. Access to the cellar.





**Bedrooms: 2 | Bathrooms: 1 | Receptions: 1**

### **Landing**

Carpeted stairs rise to the landing with access to both bedrooms and bathroom.

### **Bedroom One**

A spacious double bedroom with PVCu window to front elevation.

### **Bedroom Two**

A single bedroom with a built in cupboard. PVCu window to front aspect.

### **House Bathroom**

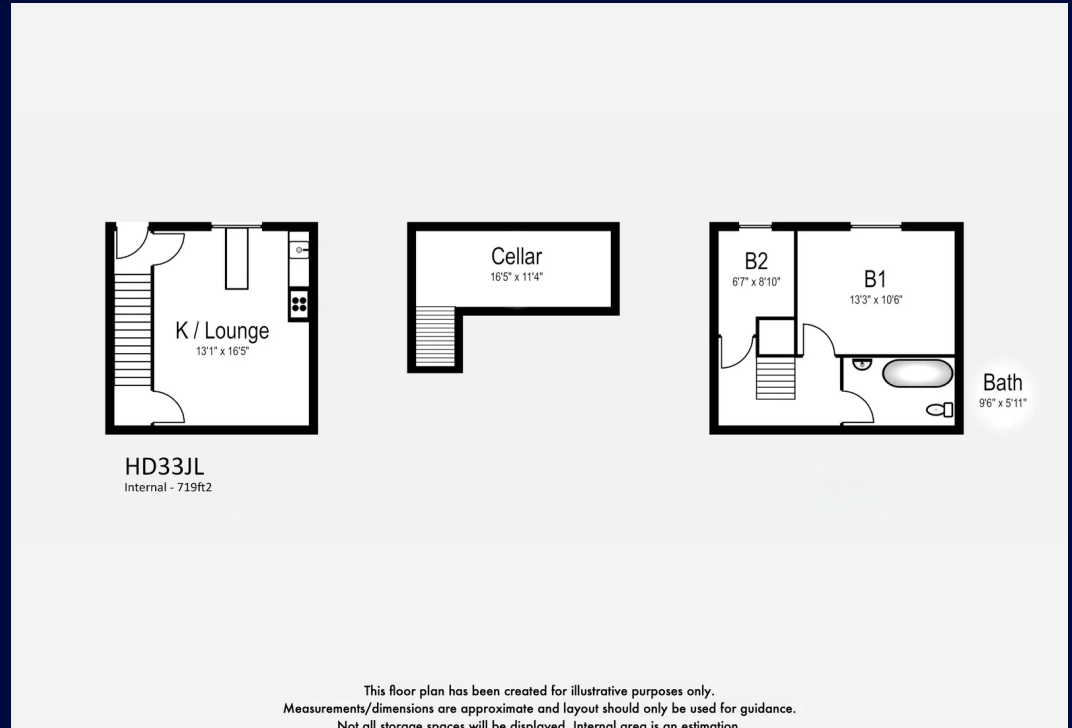
A partially tiled house bathroom with original wood flooring. Comprising of: a WC, a wash basin with tiled splashback, a bath with overhead shower and glass screen. Benefitting from a chrome towel rail, a mirror and shelving.

### **Exterior**

Steps from the property lead down to the pavement. Parking is on street parking.

Property Reference - CR1528





This floor plan has been created for illustrative purposes only.  
Measurements/dimensions are approximate and layout should only be used for guidance.  
Not all storage spaces will be displayed. Internal area is an estimation.



**Claire Ramsbottom**

**01484 817299**

[claire.ramsbottom@exp.uk.com](mailto:claire.ramsbottom@exp.uk.com)

<https://claireramsbottom.exp.uk.com>