



**Kingston Lane, TW11**

**£419,950**

**Dexters**



## Kingston Lane, TW11

Located in a central position this split level Victorian apartment is immaculate throughout, with a brand new bathroom and kitchen. This property has allocated parking and is the ideal first time purchase or investment property.

The accommodation is spread over the first and second floor. At the top of the property is the reception room which is open plan onto the kitchen. The kitchen has integrated appliances, including a dishwasher and fridge/ freezer.

There are two double bedrooms, the second bedroom with plenty of eaves storage. There is also a clever office space which is separate to the rest of the living area.

In addition there is a utility area, which has space for a washer and dryer and a modern bathroom with a separate shower cubicle.

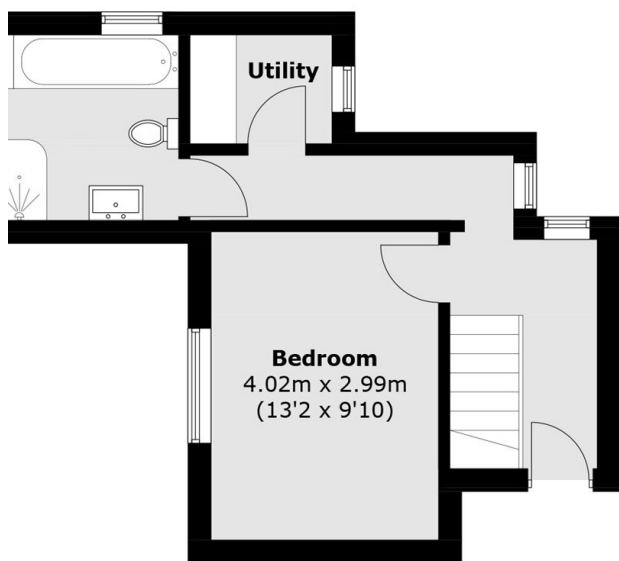
Kingston Lane is a turning off Kingston Road and a continuation of Clonmel Road. Close to Teddington High Street and mainline station with excellent school catchment. This is a highly sought after road and also close to The River Thames and Bushy Park.

### Features

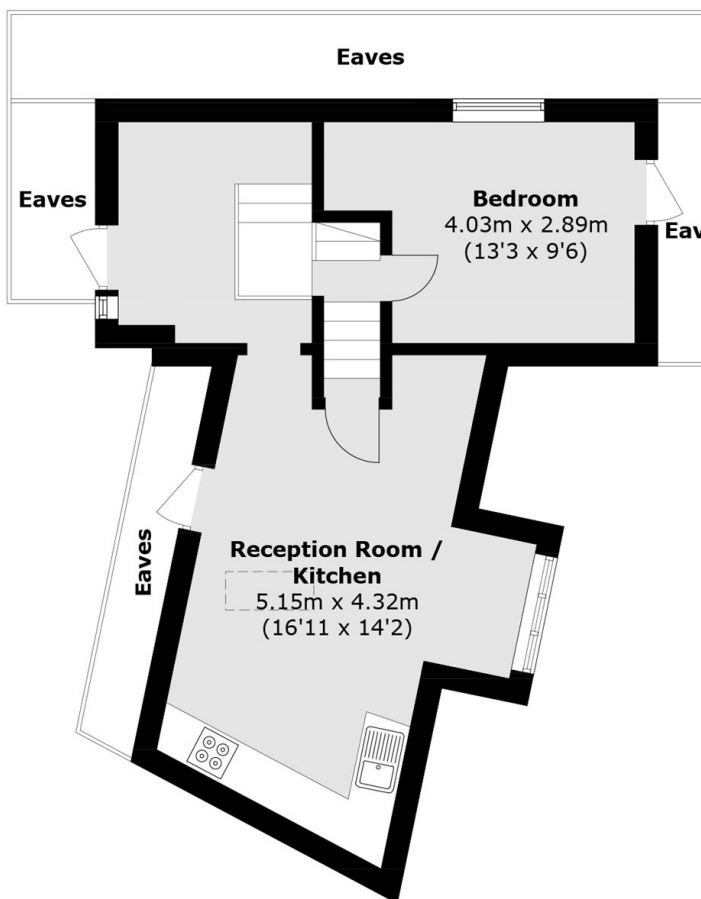
- Split Level
- Two Double Bedrooms
- Excellent Central Location
- Off Street Parking
- New Kitchen & Bathroom



# Kingston Lane, Teddington, TW11



**First Floor**



**Second Floor**

Total area (approx.): 73.1 sq. m (786.8 sq. ft)  
(Excluding Eaves)