



## Green Walk, SE1

### £750,000

Offers in Excess of £800,000 - A very smartly presented Warehouse Conversion, with large sash windows and high ceilings, a spacious open plan kitchen and living room, two double bedrooms and two bathrooms, plus secure off-street, underground parking.

The Jam Factory is one of SE1's most desirable developments, set on Rothsay Street, moments from Bermondsey Street, with London Bridge, Borough Market & the Southbank just beyond.

### Features

- OIEO £800,000
- Two Double Bedrooms
- Two Bathrooms
- High Ceilings & Sash Windows
- 24 Hour Concierge
- Secure Underground Parking
- Valid EWS1 Form
- Chain Free Sale



## Green Walk, SE1

This apartment is a fantastic size with a very large living space, allowing ample room for dining, a separate seating area, a large fully fitted kitchen and breakfast bar and is flooded with light due to its many sash windows.

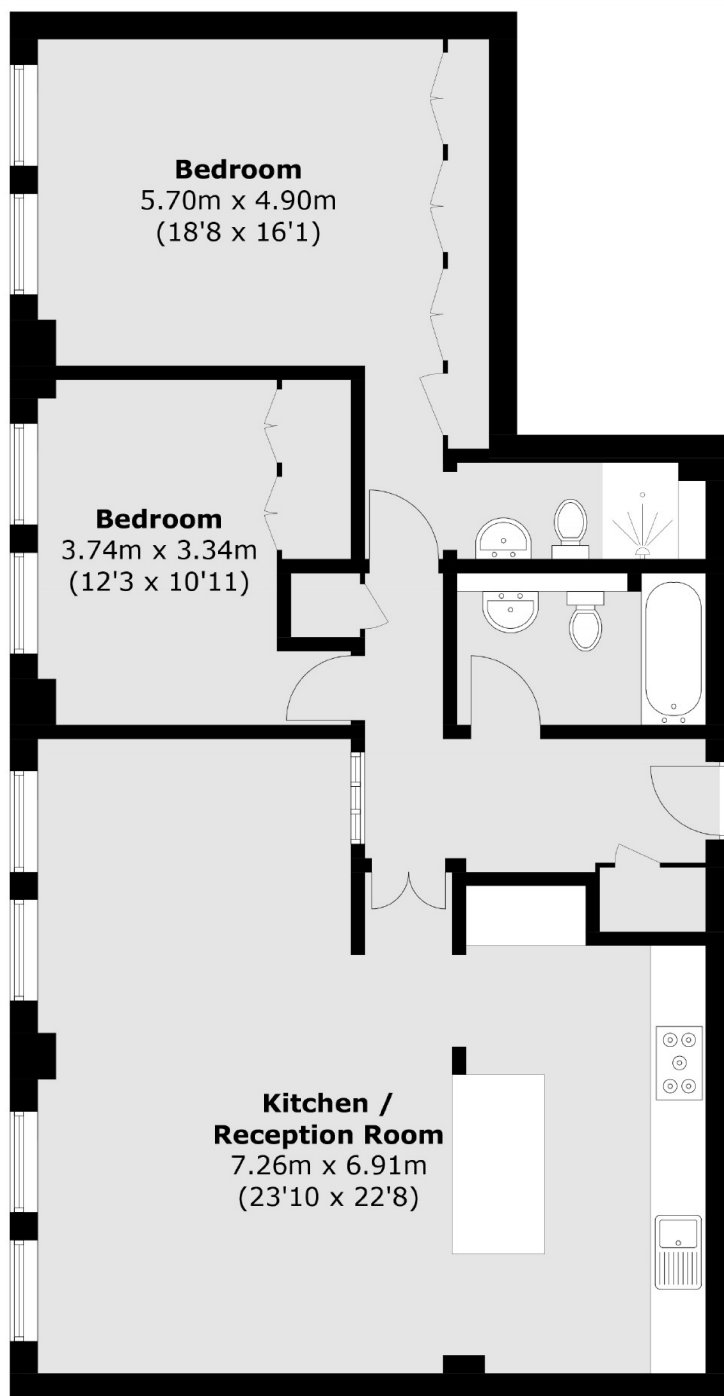
Both bedrooms are generous doubles, each with large built-in wardrobes. The master bedroom benefits from an en-suite shower room, whilst the second bedroom is served by a three piece family bathroom. Both bathrooms have been recently replaced to a high standard.

The former Hartley's Jam factory is iconic, award-winning development, with an attractive blend of period charm and contemporary design, accentuating the best original features, yet benefiting from modern fittings throughout.

Benefitting from an on-site concierge, landscaped communal gardens, walkways and a children's' play area, there is a genuine community feel here.



# Green Walk, London, SE1



Total area (approx.): 94.4 sq. m (1,016.1 sq. ft)