



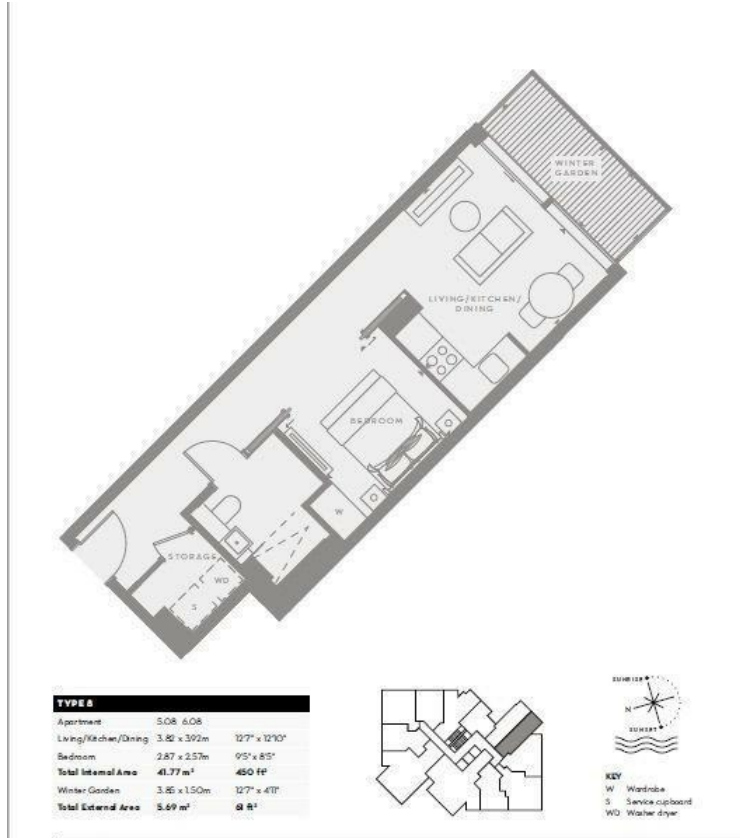
## The Dumont, 27 Albert Embankment

, London SE1 7AP

- Studio apartment
- Residents' lounge
- Indoor swimming pool
- Landscaped communal gardens
- EPC-B
- Floor-to-ceiling windows
- 24-hour concierge
- State-of-the-art gymnasium
- Vauxhall Station (Victoria Line & National Rail)
- CTB-F

**£2,850 Per Month**

Local Authority **Lambeth**  
 Council Tax Band **F**  
 EPC Rating **B**



**London Office Office**  
 Spaces Victoria, 25 Wilton Road, Pimlico,  
 London, SW1V 1LW

**Contact**  
 020 3084 3094  
[XL@londonvictoriagroups.co.uk](mailto:XL@londonvictoriagroups.co.uk)  
[www.londonvictoriagroups.co.uk](http://www.londonvictoriagroups.co.uk)

Agents Note: Whilst every care has been taken to prepare these particulars, they are for guidance purposes only. All measurements are approximate and for general guidance purposes only and whilst every care has been taken to ensure accuracy, they should not be relied upon and potential buyers/tenants are advised to recheck the measurements.