

bear

Estate Agents

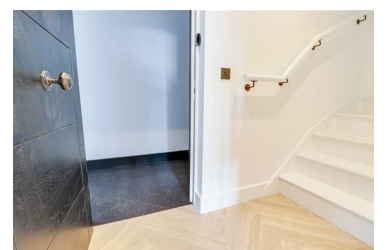


London Road, Leigh-on-Sea Price Guide £400,000



Proudly positioned on London Road in the charming coastal town of Leigh-on-Sea, this stunning first and second-floor split-level apartment offers a delightful blend of modern living and picturesque sea views. The property features two spacious double bedrooms, one of which boasts access to a lovely balcony, perfect for enjoying the fresh sea air. The heart of the home is an impressive kitchen family room, designed for both functionality and style. It comes complete with a built-in media wall and a fully fitted kitchen equipped with high-quality appliances, making it an ideal space for entertaining or relaxing with family. The apartment also includes a beautifully tiled bathroom located on the top floor, providing a serene retreat, alongside a convenient downstairs WC on the first floor for added practicality. Conveniently situated, this property is just a short stroll from Leigh Station and the vibrant Old Town, offering easy access to local amenities, shops, and the stunning coastline. This flat is perfect for those seeking a modern lifestyle in a picturesque setting. Don't miss the opportunity to make this exceptional property your new home.

- Stunning first and second floor split-level apartment
- Two double bedrooms, one of which has access to a balcony
- Impressive kitchen family room with built-in media wall and fully fitted kitchen with appliances
- Conveniently located just a short walk from Leigh Station and Old Town
- Doorstep to London Road amenities
- Sea views
- Allocated parking to the rear of the building
- Beautiful fully tiled bathroom on the top floor level and downstairs WC on the first floor
- Leigh Broadway and Belfairs Wood and Golf Course close by
- No onward chain



1336 London Road, Leigh-on-Sea, Essex, SS9 2UH

Office: 01702 887 496 los@bearestateagents.co.uk <http://www.bearestateagents.co.uk/>