



Kelvedon Close, KT2

£650,000

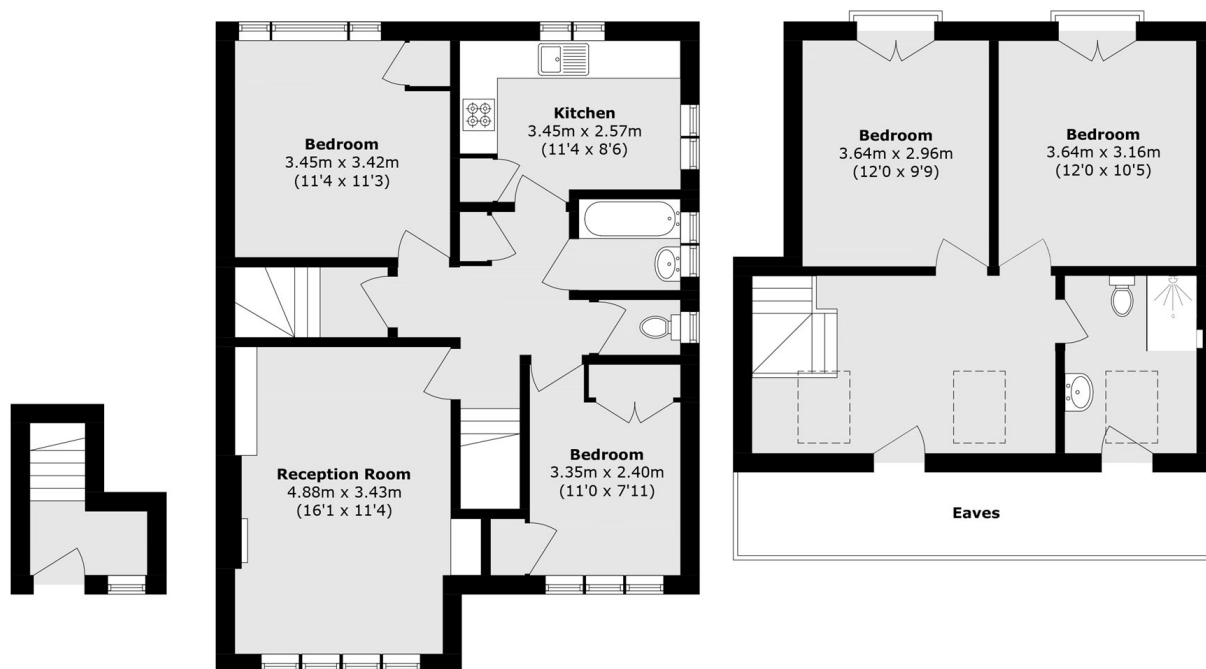
An very light, bright and spacious split level maisonette in the heart of North Kingston backing onto Richmond Park. The property offers plenty of space throughout, with very good sized rooms. There is also private patio garden as well as lovely views of Richmond Park.

The maisonette is located in a quiet cul-de-sac in North Kingston, less than a mile from Ham Parade and the banks of the river Thames. With the extensive open space of Richmond Park and an excellent choice of schools for all ages less than half a mile away, this is a perfect and tranquil setting to live and enjoy.

Features

- Maisonette
- Split Level
- Four Double Bedrooms
- Private Patio Garden
- Idyllic Views of Richmond Park
- Chain Free

Kelvedon Close, Kingston Upon Thames, KT2



Ground Floor

First Floor

Second Floor

Total area (approx.): 110.8 sq. m (1,192.7 sq. ft)